

**BAAN IVc**

---

**Definition of BEMIS 1.0a Import and  
Export File or the message type Trading  
Orders**

**A publication of:**

Baan Development B.V.  
P.O.Box 143  
3770 AC Barneveld  
The Netherlands

Printed in the Netherlands

© Baan Development B.V. 1998.  
All rights reserved.

The information in this document is subject to change without notice. No part of this document may be reproduced, stored or transmitted in any form or by any means, electronic or mechanical, for any purpose, without the express written permission of Baan Development B.V.

Baan Development B.V. assumes no liability for any damages incurred, directly or indirectly, from any errors, omissions or discrepancies between the software and the information contained in this document.

**Document Information**

Code: U7170A US  
Group: User Documentation  
Edition: A  
Date: October, 1998

# Table of contents

<b>1</b>	<b>General principles</b>	<b>1-1</b>
	Available kinds of data records	1-1
	Branching diagramm	1-2
	Key fields outgoing	1-4
	Key fields incoming	1-4
	Network directories	1-5
	BEMIS Messages - Conventions	1-6
	Changing The Date Format	1-8
<b>2</b>	<b>Data record description by kind of data record</b>	<b>2-1</b>
	SA1 MESSAGE OVERHEAD	2-1
	SA2 ORDER HEADER	2-12
	SA3 ORDER TEXT - <i>TEXTDATEN</i>	2-31
	SA4 Order Delivery and Invoice Addresses	2-38
	<i>First Appearance: Delivery Address ( Address Qualifier: 0 )</i>	2-38
	<i>Second Appearance: Invoice Address ( Address Qualifier: 1 )</i>	2-40
	<i>First Appearance: Delivery Address ( Address Qualifier: 0 )</i>	2-42
	<i>Second Appearance: Invoice Address ( Address Qualifier: 1 )</i>	2-52
	SA5 Order Lines	2-63
	SA6 Delivery Address per Order Line	2-87
<b>Appendix A</b>	<b>Sample file</b>	<b>1</b>

**Definition of BEMIS 1.0a Import and Export File or the message type Trading Orders**  
**ii**

# About this document

This documentation describes in a detailed way the standard inhouse data formats, which the BAAN Electronic Message Interchange System BEMIS requires as interfaces to the respective EDI Sub-System.

The documentation is intended for developers of EDI Sub-Systems, which want to realize an interface of their software to BAAN IV. Furthermore, it supports consultants, who want to implement and verify such an interface within a customer project.

Chapter 1 gives an overview over the general principles of the relevant EDI message. For example available kinds of data records, message structure, key fields and other conventions.

Chapter 2 describes all corresponding kinds of data records for the EDI message in a detailed way. All data fields are listed in an overview table in connection with the corresponding table fields. In addition, every single field is described in a more detailed way. You will find information about the general conditions, which you need to observe for the processing in the EDI Sub-System or in BAAN IV.

**Definition of BEMIS 1.0a Import and Export File or the message type Trading Orders**

**iv**

# 1 General principles

This section describes the BAAN EDI inhouse format for the message type *Orders (incoming/outgoing)*.

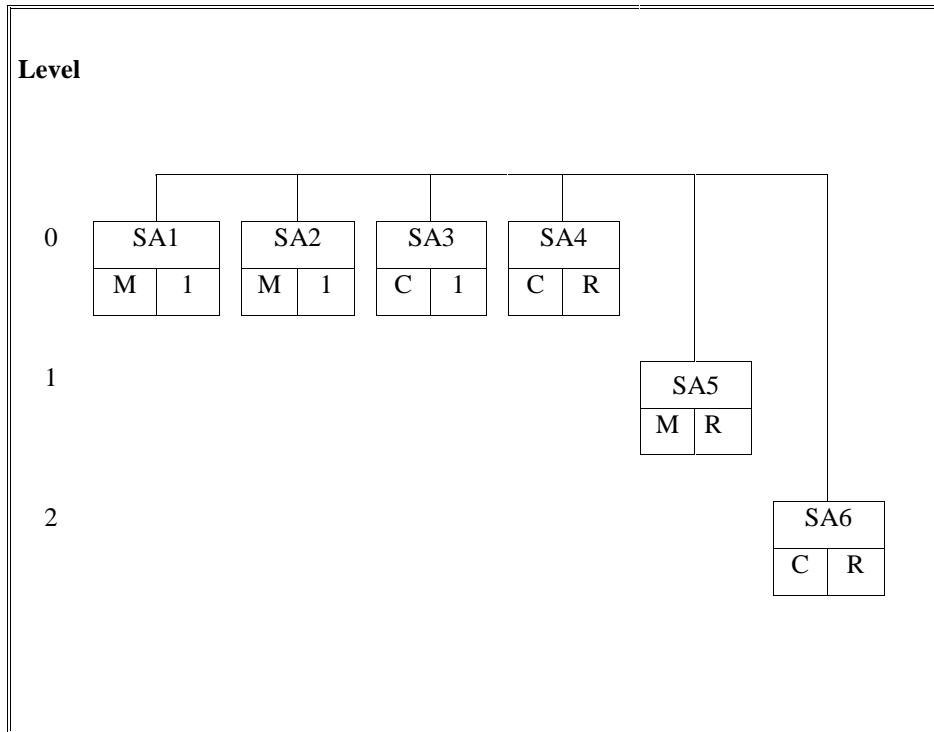
## Available kinds of data records

The use of the following kinds of data records is conditional (C) respectively mandatory (M), when you transmit information about orders.

<b>Id</b>	<b>Status</b>	<b>Name</b>
SA1	M	Overhead
SA2	M	Order Header
SA3	C	Order Header Text
SA4	C	Order Delivery / Invoice Addresses
SA5	M	Order Line
SA6	C	Order Line delivery Addresses

## Branching diagramm

The following data record structure is used for the message type BEMIS - Orders:



Legend:

Status:

M: mandatory in message

C: conditional in message

Frequency:

1: once by message

R: repeatable by message



For example, for two required orders with each two lines the BEMIS file has the following structure:

SA1 ...	BAAN IV Overhead
SA2 ...	Order Header 1
SA3 ...	Order Header 1 Text
SA4 ...	Order Delivery Address Order 1
SA4. ...	Order Invoice Address Order1
SA5 ...	Order Lines Item 1
SA6 ...	Order Line Delivery Address Item 1
SA5...	Order Line Item 2
SA6 ...	Order Line Delivery Address Item 2
...	

SA1 ...	BAAN IV Overhead
SA2 ...	Order Header 2
SA3 ...	Order Header 2 Text
SA4 ...	Order Delivery Address Order 2
SA4...	Order Invoice Address Order 2
SA5 ...	Order Lines Item 1
SA6 ...	Order Line Delivery Address Item 1
SA5...	Order Line Item 2
SA6 ...	Order Line Delivery Address Item 2
...	

If a Order Line Delivery Address (SA6) is used for each item, the Order Delivery Address on the header (SA4) is ignored in Baan.

## Key fields outgoing

The following structure of the key fields is used to determine the related data records of an order:

Kind of data record	Key field 1	Key field 2	Key field 3	Key field 4
SA1	Message Reference	Network Address		
SA2	Message Reference	Network Address		
SA3	Message Reference	Network Address	Order Number	
SA4	Message Reference	Network Address	Order Number	
SA5	Message Reference	Network Address	Order Number	
SA6	Message Reference	Network Address	Order Number	Order Position Number

## Key fields incoming

The following structure of the key fields is used to determine the related data records of an order message:

Kind of data record	Key field 1	Key field 2	Key field 3	Key field 4
SA1	Message Reference	Customer Network Address		
SA2	Message Reference	Customer Network Address		
SA3	Message Reference	Customer Network Address	Customer Purchase Order Number	
SA4	Message Reference	Customer Network Address	Customer Purchase Order Number	
SA5	Message Reference	Customer Network Address	Customer Purchase Order Number	
SA6	Message Reference	Customer Network Address	Customer Purchase Order Number	Order Position Number

## Network directories

The so-called network directories form the basis of the communication between the EDI Sub-System and BAAN IV. These directories are established in BAAN. The network basis directories for each network will be defined in the BAAN session SETcedi0120m000. For the network BEMIS, the basis directories can be indicated in the following way:

**/auto3/baanIV/bemis/order/**

BAAN will additionally create the following subdirectories:

**/auto3/baanIV/bemis/order/appl\_from/**

**/auto3/baanIV/bemis/order/appl\_to/**

**/auto3/baanIV/bemis/order/command/**

**/auto3/baanIV/bemis/order/store\_recv/**

**/auto3/baanIV/bemis/order/store\_sent/**

**/auto3/baanIV/bemis/order/trace/**

The above mentioned directories have the following function:

- 1 **.../appl\_from/:** In this directory, BAAN IV records the outgoing messages which are the defined BEMIS inhouse format files. The EDI Sub-System can collect them from here.
- 2 **.../appl\_to/:** The EDI Sub-System writes the incoming message into this directory in the BAAN IV inhouse format.
- 3 **.../command/:** Directory of the semaphores.
- 4 **.../store\_recv/:** BAAN IV stores in this directory processed incoming messages, if the configuration is accordingly. During this process an additional subdirectory by incoming message file will be created which is named with a date and time stamp indicating when the message was moved.
- 5 **.../store\_sent/:** BAAN IV stores in this directory processed outgoing messages if the configuration is accordingly. During this process an additional subdirectory by incoming message file will be created which is named with a date and time stamp indicating when the message was moved.
- 6 **../trace/:** BAAN creates under this directory a log of the incoming and outgoing messages in the processing order, if the configuration is accordingly.

For every message type one network directory will be used for outgoing and one for incoming messages. This means that one message file contains data for several business partners.

The file name of the BEMIS inhouse format file of the order, which is being described in this documentation, is defined in the following way:

Direction	File name	Network directory
outgoing	ORDEROUT	../appl_from
incoming	ORDERIN	../appl_to

## BEMIS Messages - Conventions

The following general rules apply to a message record in a BEMIS message file:

- 1 Every message record starts with "SAX"
- 2 Every message record ends with "SAX\_END"
- 3 The length of a data record can vary.
- 4 The message record must consist of all fields, even if not every field contains a value.
- 5 The fields in the file must be separated by a ; .
- 6 A filled string field have to be put in "...".

In the following sections you will find the format descriptions for the individual kinds of data records of the interface file. The table contains the following data:

<i>ORDER INHOUSE FORMAT</i>				
<i>Pos</i>	<i>FIELD DESCRIPTION</i>	<i>Key</i>	<i>ST</i>	<i>FM</i>

The first block of the table describes the format of a kind of data record:

Pos.	Position of the field in the data record
Field description	Description of the field
Key	Key field outgoing (O) / incoming (I)
ST	Field status mandatory (M) / conditional (C)
FM	Field format
	an..14 alphanumerical field with a maximum of 14 characters
	an14 alphanumerical field with exactly 14 characters
	n..10 numerical field with a maximum of 10 characters
	n1 numerical field with exactly 1 character

<i>from Application Table Fields (out) / Mapping to (in)</i>	
<i>Table Field</i>	<i>Action</i>

The second block of the table describes the corresponding table field in BAAN IV as well as possible special actions, which will be carried out during the processing of the messages.

When BAAN generates outgoing messages, the numerical fields are written into the inhouse format file without leading zeros. For example, for the year "0000" a "0" will be written into the BEMIS message file.

Following the table overview, every field is described in a more detailed way, including information about the processing in the EDI Sub-System and in BAAN IV.

In the past, there seemed to be some doubts about the way BAAN points out a position within the message file. Here are some additional explanations:

As defined in BEMIS a position within a message file is pointed out using two semikolons.

To draw an example: "SAX";...;Position;...;"SAX\_END"

If an position in a BEMIS Message File is not taken by a value (this means the position is empty), the position is pointed out as shown above. Moreover the BAAN EDI Module distinguishes between numerical and alphanumeric data format. If a position defined as numerical is empty the position is pointed out using semikolons. On the other hand empty alphanumeric positions are exported in two way. The first way is to point out a position using the semicolons. The second way BAAN exports empty alphanumeric positions is to write two inverted commands within the position. This depends whether the alphanumeric field exists in BAAN's database or not. Finally we take a look at the following example:

empty numerical Position:

"SAX";...;;...;"SAX\_END"

empty alphanumeric Position:

"SAX";...;;...;"SAX\_END"

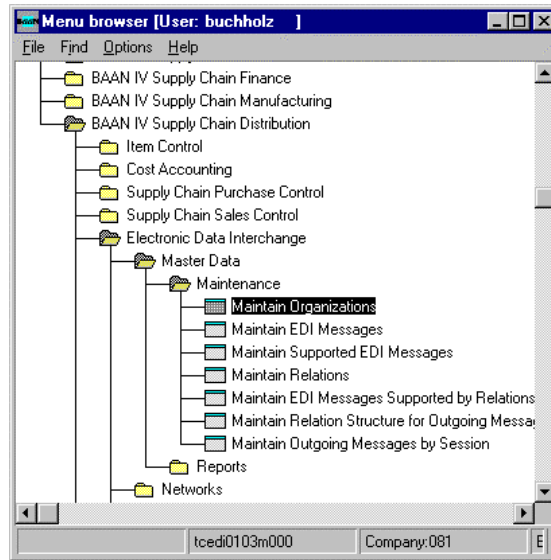
OR

"SAX";...;"";...;"SAX\_END"

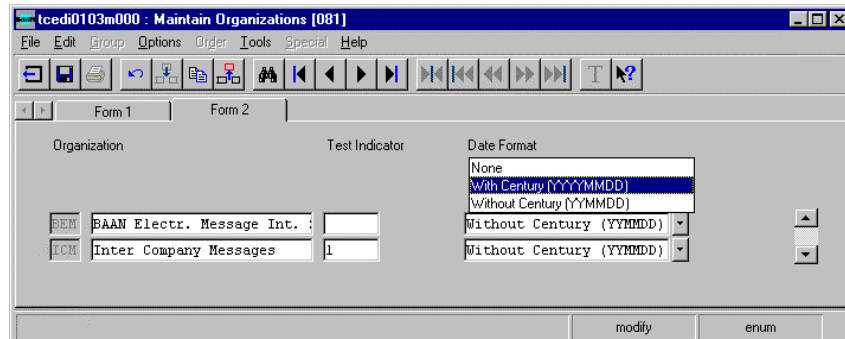
## Changing The Date Format

For the BAAN Versions b and c we have defined a date format using up to 6 numerical digits. Reading this definition, you will find out that the date format has been changed to 8 digits at maximum. With the BAAN Version BAAN IVC4 the delivered BEMIS default file the defaults.edi will be different in this point (in comparison to the versions delivered before). In BAAN EDI there is one global Parameter in order to send out date information including the two digits for the century.

The enclosed screen shots will show you where you will find the responsible parameter. You have to choose the following menu option:



After you called the session tcedi0103m000 you will see that the entry for the dateformat on form two has been changed to "With Century (YYYYMMDD)".



Definition of BEMIS 1.0a Import and Export File or the message type Trading Orders

## 2 Data record description by kind of data record

### SA1 MESSAGE OVERHEAD

Status: Mandatory  
 Frequency: Once by order  
 Description: This data record contains information about the transmitter, the message type and the time of the transmission. The message reference identifies all related data records of this message.

<i>ORDER INHOUSE FORMAT</i>					<i>Mapping from Application Table Fields (out)</i>		<i>Mapping to Application Fields (in)</i>	
<i>Pos</i>	<i>FIELD DESCRIPTION</i>	<i>Key</i>	<i>ST</i>	<i>FM</i>	<i>Table Field</i>	<i>Action</i>	<i>Table Field</i>	<i>Action</i>
	Kind of data record	O/I	M	an3	SA1		SA1	
	Message reference	O/I	M	an..14	tcedi701.bano	Generation (see below)	tcedi702.bano	Generation by EDI Sub-System
	Network address customer / supplier	O/I	M	an..17	tcedi028.neta	Conversion (see below)	tcedi702.reno	Conversion (see below)
	Our identification in the network		M	an..17	tcedi020.neta	Conversion (see below)		
	Message		M	an..6	tcedi001.code	Conversion (see below)	tcedi702.mess	Conversion (see below)
	Organization		M	an..6	tcedi003.code	Conversion (see below)	tcedi702.orga	Conversion (see below)
	Order type		M	an..35	tcedi011.koor	Conversion (see below)	tcedi702.koor	Conversion (see below)

**Data record description by kind of data record**

	Transmission reference		M	an..20	tdpur040.orno		tcedi702.msno	
	Date of transmission		M	n..8	current date		tcedi702.send	
	Time of transmission		M	n..4	current time		tcedi702.sent	
	Transmission reference old		C	an..20	0		tcedi702.pmo	
	Data record end sign		M	an7	SA1_END		SA1_END	

<b>Detailed description:</b>	<b>Order</b>
<b>Kind of data record:</b>	<b>SA1 Overhead</b>

Position	<b>1</b>	Field format	<b>an3</b>	Field status	<b>M</b>
Field name		<b>Kind of data record</b>		(Key field out/in)	

Description: This field identifies the kind of data record in the message block. It contains the constant value 'SA1'.

Processing outgoing

EDI Sub-System:

BAAN: This field will be filled with the constant value 'SA1'.

Processing incoming

EDI Sub-System: This field will be filled with the constant value 'SA1'.

BAAN: None



Position	<b>2</b>	Field format	<b>an..14</b>	Field status	<b>M</b>
Field name		<b>Message reference</b>		(Key field out/in)	

**Description:** This field identifies all connected data records of one order. The numbering, which has to be clear by order, helps to control the chronological order of the orders and the complete transmission. The field consists of a fix item with four characters, the current date (format: YYMMDD) and a serial number with four characters.

The special format will be defined in the network parameters in the BAAN table TBtcedi020. When generating the message reference with the EDI Sub-System, the created message reference needs to be specific, that means unique. While storing the message reference BAAN controls whether it is specific.

**Processing outgoing**

**EDI Sub-System:**

**BAAN:** BAAN generates this number to identify an order, stores it in the BAAN table field TFtcedi701.bano and writes it into all data records of an order.

**Processing incoming**

**EDI Sub-System:** The EDI Sub-System generates this number to identify an order and writes it into all data records of an order.

**BAAN:** Mapping to BAAN table field TFtcedi702.bano.

Position <b>3</b>	Field format	<b>an..17</b>	Field status	<b>M</b>
Field name	<b>Network address customer / supplier</b>			(Key field out/in)

Description: This field contains on the outgoing side the network address of the supplier and on the incoming side the network address of the customer.

Processing outgoing

EDI Sub-System: Transmission of the value from the message file.

BAAN: The network address is stored in the BAAN table TBtcedi028 'Relations by network' under the corresponding business partner (supplier) and the corresponding network in the BAAN table field TFtcedi028.neta. The contents of this field is mapped to the position of the transmission file. Here you can store the general ILN-Number for your customer.

Processing incoming

EDI Sub-System:

BAAN: The network address determines the corresponding business partner (customer) and the network in the table TBtcedi028 'Relations by network'. This identification is mapped to the BAAN table field TFtcedi702.reno.

Position	4	Field format	an..17	Field status	M
Field name	<b>Our identification in the network</b>				

Description: This field contains on the outgoing side our identification (customer) in the network.

Processing outgoing

EDI Sub-System:

BAAN: The department or employee coded in the used network is entered in the table TBtcedi020 'Networks'. The BAAN table field TFtcedi028.neta is mapped to this position. Here you can enter the ILN Number to identify yourself with your ILN Number.

Processing incoming

EDI Sub-System: Transmission of the value from the message file.

BAAN: On the incoming side this field will be ignored.

Position	<b>5</b>	Field format	<b>an..6</b>	Field status	<b>M</b>
Field name	<b>Message</b>				

Description: This field contains the code for the identification of the concerned message. The code for the message type 'Orders' is ORDERS.

Processing outgoing

EDI Sub-System:

BAAN: The internal message code tcedi001.code 'ORDERS' of the BAAN table TBtcedi001 'Supported EDI messages' is mapped to this position.

Processing incoming

EDI Sub-System:

This field will be filled with the constant value 'ORDERS'.

BAAN:

The message code in the table TBtcedi001 'Supported EDI Messages' determines, which internal message in BAAN is connected to this order. In the BAAN table TBtcedi005 'EDI Messages' is determined for every message which session (DII ) is used in BAAN to process the order. The message code is mapped to the BAAN table field TFtcedi702.mess.

Position	<b>6</b>	Field format	<b>an..6</b>	Field status	<b>M</b>
Field name	<b>Organization</b>				

Description: This field contains the organization (Standard), which is used for the EDI communication.

Processing outgoing

EDI Sub-System:

BAAN: The internal organisation code tcedi003.code 'BEMIS' from the BAAN table TBtcedi003 'Organizations' is mapped to this position.

Processing incoming

EDI Sub-System: This field will be filled with the constant value 'BEMIS'.

BAAN: Mapping to BAAN table field TFtcedi702.orga.  
The corresponding organization must have been entered into the BAAN table TBtcedi003.

Position	<b>7</b>	Field format	<b>an..35</b>	Field status	<b>M</b>
Field name	<b>Order type</b>				

Description: This field contains a code for the concerned order type.

Processing outgoing

EDI Sub-System:

BAAN: In the BAAN table TBtcedi011 there must be an entry for this order type in connection with the respective message and organization. The BAAN table field TFtcedi011.koor is mapped to this position. This field is filled with the EDIFACT order types. For example "220" for normal orders. The inhouse order type is converted in TBtcedi432.

Processing incoming

EDI Sub-System:

BAAN: Mapping to BAAN table field TFtcedi702.koor.  
In the BAAN table TBtcedi200 there must be an entry for this order type in connection with the respective message and organization.

Position	<b>8</b>	Field format	<b>an..20</b>	Field status	<b>M</b>
Field name	<b>Transmission Reference</b>				

Description: This field contains the reference code which the EDI Sub-System applied to this transmission.

Processing outgoing

EDI Sub-System:

BAAN: The position will be filled with the purchase order number from BAAN table field TFtdpur040.orno

Processing incoming

EDI Sub-System: Transmission of the value from the transmission file.

BAAN: Mapping to BAAN table field TFtcedi702.msno. This field should contain the customer purchase order number.

Position	<b>9</b>	Field format	<b>n..8</b>	Field status	<b>M</b>
Field name	<b>Date of transmission</b>				

Description: This field contains on the outgoing side the current date, on which the order message was created. On the incoming side, this field contains the arrival date of the order at the EDI Sub-System (format: YYYYMMDD).

Processing outgoing

EDI Sub-System:

BAAN: Mapping of the current date to the position.

Processing incoming

EDI Sub-System: Entry of the arrival date of the message at the EDI Sub-System.

BAAN: Mapping to BAAN table field TFtcedi702.send

Position	<b>10</b>	Field format	<b>n..4</b>	Field status	<b>M</b>
Field name	<b>Time of transmission</b>				

Description: This field contains on the outgoing side the time, when the order message was created. On the incoming side, the field contains the arrival time of the order at the EDI Sub-System (format: HHMM).

Processing outgoing

EDI Sub-System:

BAAN: Mapping of the current time to the position

Processing incoming

EDI Sub-System: Entry of the arrival time of the message at the EDI Sub-System.

BAAN: Mapping to BAAN table field Tftcedi702.send.

Position	<b>11</b>	Field format	<b>an..20</b>	Field status	<b>C</b>
Field name	<b>Transmission reference old</b>				

Description: This field contains the reference number, which the EDI Sub-System applied to the previous transmission.

Processing outgoing

EDI Sub-System: Entry of the reference code for the previous transmission into transmission file.

BAAN: The position will be filled with 0 .

Processing incoming

EDI Sub-System: Transmission of the value from the transmission file.

BAAN: Mapping to BAAN table field Tftcedi702.pno



Position	<b>12</b>	Field format	<b>an7</b>	Field status	<b>M</b>
Field name	<b>Data record end sign</b>				

Description: This field indicates the end of the data record. It contains the constant value 'SA1\_END'.

Processing outgoing

EDI Sub-System:

BAAN: This field will be filled with the constant value 'SA1\_END'.

Processing incoming

EDI Sub-System: This field will be filled with the constant value 'SA1\_END'.

BAAN: None

## SA2 ORDER HEADER

Status : Mandatory  
 Frequency: Once by order number  
 Description: This data record contains all information of the order header except of address and text data and is related to SA1.

<i>ORDER INHOUSE FORMAT</i>					<i>Mapping from Application Table Fields (out)</i>		<i>Mapping to Application Fields (in)</i>	
<i>Pos</i>	<i>FIELD DESCRIPTION</i>	<i>Key</i>	<i>ST</i>	<i>FM</i>	<i>Table Field</i>	<i>Action</i>	<i>Table Field</i>	<i>Action</i>
1.	Kind of data record	O/I	M	an3	SA2		SA2	
2.	Message reference	O/I	M	an..14	tcedi701.bano		tcedi702.bano	
3.	Supplier code (out) Network address customer (in)	O I	M M	an..6 an..17	tcedi028.neta	Conversion	tdsls040.cuno	Conversion (see below)
4.	Order Number	O/I	M	n..6 an..30 an..30	tdpur040.orno		tdsls040.refa tdsls040.eono	Baan IVc
5.	Contract Number		C	n..6	tdpur040.pno		tdsls040.pno	
6.	Order Date		C	n..8	tdpur040.odat		tdsls040.odat	
7.	Planned Delivery Date		C	n..8	tdpur040.ddat		tdsls040.ddat	
8.	Term of Delivery		C	an..6	tdpur040.cdec	Code and Conversion	tdsls040.cdec	Code and Conversion
9.	Terms of PaymentTerms		C	an..6	tdpur040.cpay	Code and Conversion	tdsls040.cpay	Code and Conversion
10.	Order Discount		C	n..6	tdpur040.odis	NNN.NN	tdsls040.odis	NNN.NN
11.	Currency		C	an..6	tdpur040.ccur	Code and Conversion	tdsls040.ccur	Code and Conversion
12.	Purchase / Sales Currency Rate		C	n..13	tdpur040.ratp	NNNNNN.NNN NNN		
13.	Purchase Rate Factor		C	n..6	tdpur040.ratf	NNNNNN		
14.	Late Payment Surcharge		C	n..6	tdpur040.ccrs	Code and Conversion	tdsls040.ccrs	Code and Conversion
15.	Forwarding Agent		C	an..20	tdpur040.cfrw	Code and Conversion	tdsls040.cfrw	Code and Conversion

Definition of BEMIS 1.0a Import and Export File or the message type Trading Orders

**Data record description by kind of data record**

<b>ORDER INHOUSE FORMAT</b>					<b>Mapping from Application Table Fields (out)</b>		<b>Mapping to Application Fields (in)</b>	
<b>Pos</b>	<b>FIELD DESCRIPTION</b>	<b>Key</b>	<b>ST</b>	<b>FM</b>	<b>Table Field</b>	<b>Action</b>	<b>Table Field</b>	<b>Action</b>
16.	Reference A		C	an..30	tdpur040.refa			
17.	Reference B		C	an..20	tdpur040.refb		tdsls040.refb.txt	
18.	Qualifier Address Code 1		M	an2	DP		DP	
19.	Qualifier Address Code 2		M	an2	ZZ		ZZ	
20.	Qualifier Address Code 3		M	an2	IP		IP	
21.	Qualifier Address Code 4		M	an3	IZ		IZ	
22.	Code for Warehouse		C	an..20	tdpur040.cwar	Code and Conversion	(tdsls040.cdel)	Code and Conversion
23.	Suppliers Delivery Point Number Coded		C	an..20	tcedi462.codm	Code and Conversion		
24.	Price list		C	an..3	tdpur040.cplp		tdsls040.cpls	
25.	Region		C	an..3	tdpur040.creg		tdsls040.creg	
26.	Line of Business		C	an..6	tdpur040.cbrn		tdsls040.cbrn	
27.	Planned receipt date		C	n..8			tdsls040.prdt	
28.	Data record end sign (Satzendekennung)		M	an7	SA2_END		SA2_END	

<b>Detailed description:</b>	<b>Order</b>
<b>Kind of data record:</b>	<b>SA2 Order Header</b>

Position	<b>1</b>	Field format	<b>an3</b>	Field status	<b>M</b>
Field name		<b>Kind of data record</b>		(Key field out/in)	

Description: This field identifies the kind of data record in the message block. It contains the constant value 'SA2'.

Processing outgoing

EDI Sub-System:

BAAN: This field will be filled with the constant value 'SA2'.

Processing incoming

EDI Sub-System: This field will be filled with the constant value 'SA2'.

BAAN:

Position	<b>2</b>	Field format	<b>an..14</b>	Field status	<b>M</b>
Field name		<b>Message reference</b>		(Key field out/in)	

Description: This field identifies all connected data records of one order. The numbering of the message reference, which has to be clear by Order, helps to control the chronological order of the Orders and the complete transmission.

Processing outgoing

EDI Sub-System:

BAAN: Refer to data record SA1.

Processing incoming

EDI Sub-System: Refer to data record SA1

BAAN:

Position	<b>3 out</b>	Field format	<b>an..6</b>	Field status	<b>M</b>
Field name	<b>Supplier code</b>		(Key field out)		

Description: This field contains the identification code of the supplier on the customer side.

Processing outgoing

EDI Sub-System:

BAAN: Refer to data record SA1

Position	<b>3 in</b>	Field format	<b>an..17</b>	Field status	<b>M</b>
Field name	<b>Network address customer</b>		(Key field in)		

Description: This field contains the network address of the customer.

Processing incoming

EDI Sub-System: Refer to data record SA1

BAAN: Refer to data record SA1.

Position	<b>4</b>	Field format	<b>out n..6 / in an..30</b>	Field status	<b>M</b>
Field name	<b>Order Number</b>			(Key field in/out)	

Description: This field contains the order number.

Processing outgoing

EDI Sub-System: None.

BAAN: The purchase order number is mapped from BAAN table field TFtdpur040.orno to this position.

Processing incoming

EDI Sub-System: Transmission of the value from the message file.

BAAN: Mapping to BAAN table field TFtdsls040.refa  
 Baan IVc: Mapping to BAAN table field TFtdsls040.eono

Position	<b>5</b>	Field format	<b>n..6</b>	Field status	<b>C</b>
Field name	<b>Contract Number</b>				

Description: This field contains the Contract Number which is defined with the customer/supplier.

Processing outgoing

EDI Sub-System: None

BAAN: The purchase contract number is mapped from BAAN table TBtdpur040.pno to this position.

Processing incoming

EDI Sub-System: Transmission of the value from the message file.

BAAN: Mapping to the BAAN table field TFtdsls040.pno

Position	<b>6</b>	Field format	<b>n..8</b>	Field status	<b>C</b>
Field name	<b>Order Date</b>				

Description: This field contains the date (YYYYMMDD) the order is entered in the system.

Processing outgoing

EDI Sub-System: None.

BAAN: The order date from BAAN table field TFtdpur040.odat is mapped to this position.

Processing incoming

EDI Sub-System: Transmission of the value from the message file or entry of the arrival date of the message at the EDI Sub-System (only possible, if the delivery date is not in the past)

BAAN: Mapping to BAAN table field TFtdsls040.odat

Position	<b>7</b>	Field format	<b>n..8</b>	Field status	<b>C</b>
Field name	<b>Delivery Date</b>				

Description: This field contains the date (YYYYMMDD) on which the delivery should take place.

Processing outgoing

EDI Sub-System: None.

BAAN: The purchase order delivery date from BAAN table field TFtdpur040.ddat is mapped to this position.

Processing incoming

EDI Sub-System: Transmission of the value from the message file.

BAAN: Mapping to the BAAN table field TFtdsls040.ddat

Position	<b>8</b>	Field format	<b>an..6</b>	Field status	<b>C</b>
Field name	<b>Term of Delivery</b>				

Description: This field contains a code for the Term of Delivery. This field indicates how to frank the shipment (unfranked,...) It contains a unique alphanumerical identification.

01 = unfranked (unfrei)  
 02 = free destination (frei Bestimmungsort)  
 03 = free to the door (frei Haus)  
 04 = free German border (frei deutsche Grenze)  
 05 = free receiving carrier (frei Empfängsspediteur)  
 99 = special postage (Sonderfrankatur)

Processing outgoing

EDI Sub-System: None.

BAAN: The Term of Delivery of the purchase order from BAAN table field TFtdpur040cdec is mapped to this position. If other definitions are used in BAAN, the BAAN table TBtcedi430 is used for conversion.

Processing incoming

EDI Sub-System: Transmission of the value from the message file.

BAAN: Mapping to the BAAN table field TFtdsls040.cdec and Conversion via BAAN table TBtcedi300.



Position	<b>9</b>	Field format	<b>an..6</b>	Field status	<b>C</b>
Field name	<b>Terms of Payment</b>				

Description: This field contains a Code for the Terms of Payment agreed upon with the relation.

Processing outgoing

EDI Sub-System:

BAAN: The Terms of Delivery of the purchase order from BAAN table field TFtdpur040.cpay is mapped to this position and converted using the table TBtcedi466.

Processing incoming

EDI Sub-System: Transmission of the value from the message file.

BAAN: Mapping to the BAAN table field TFtdsls040.cpay and conversion via BAAN table TBtcedi326.

Position	<b>10</b>	Field format	<b>n..6</b>	Field status	<b>C</b>
Field name	<b>Order Discount</b>				

Description: This field contains the Order Discount related to the complete order amount.  
NNN.NN. Maximum is 100.00

Processing outgoing

EDI Sub-System:

BAAN: The Order Discount of the purchase order from BAAN table field TFtdpur040.odis is mapped to this position.

Processing incoming

EDI Sub-System: Transmission of the value from the message file.

BAAN: Mapping to the BAAN table field TFtdsls040.odis

Position	<b>11</b>	Field format	<b>an..6</b>	Field status	<b>C</b>
Field name	<b>Currency</b>				

Description: This field contains the Currency relevant for the order. It contains the clear alphanumerical identification of the invoice. The currency code will be defined according to ISO 4217, e.g. ,280' for German mark (DM).

Processing outgoing

EDI Sub-System:

BAAN: The Currency relevant for the purchase order from BAAN table field TFtdpur040.ccur is mapped to this position and converted using table TBtcedi324.

Processing incoming

EDI Sub-System:

Transmission of the value from the message file.

BAAN:

Mapping to the BAAN table field TFtdsls040.ccur and conversion with BAAN table TBtcedi438.

Position	<b>12</b>	Field format	<b>n..13</b>	Field status	<b>C</b>
Field name	<b>Currency Rate</b>				

Description: This field contains the Rate used to convert the currency (position 1) into the home currency.

Processing outgoing

EDI Sub-System:

BAAN: The currency rate of the purchase order from BAAN table field TFtpur040.ratp is mapped to this position.

Processing incoming

EDI Sub-System:

BAAN: None

Position	<b>13</b>	Field format	<b>n..6</b>	Field status	<b>C</b>
Field name	<b>Rate Factor</b>				

Description: This field contains the Rate Factor used as basis for the conversion of the currency. Mostly used 1, 10, 100 or 1000.

Processing outgoing

EDI Sub-System:

BAAN: The rate factor of the purchase order from BAAN table field TFtdpur040.ratf is mapped to this position.

Processing incoming

EDI Sub-System:

BAAN: None

Position	<b>14</b>	Field format	<b>n..3</b>	Field status	<b>C</b>
Field name	<b>Late Payment Surcharge</b>				

Description: This field contains the Late Payment Surcharge.

Processing outgoing

EDI Sub-System:

BAAN: The Late Payment Surcharge of the purchase order from BAAN table field TFtdpur040ccrs is mapped to this position. A conversion has to be done with BAAN table TBtcedi470.

Processing incoming

EDI Sub-System: Transmission of the value from the message file.

BAAN: Mapping to the BAAN table field TFtdsls040.ccrs and conversion with BAAN table TBtcedi330.

Position	<b>15</b>	Field format	<b>an..20</b>	Field status	<b>C</b>
Field name	<b>Forwarding Agent</b>				

Description: This field contains the Code of the Forwarding Agent used for this order. The code list has to be agreed with the partner.

Processing outgoing

EDI Sub-System:

BAAN: The Code for the Forwarding Agent of the purchase order from BAAN table field TFtdpur040.cfrw is mapped to this position. and converted with BAAN table TBtcedi456

Processing incoming

EDI Sub-System: Transmission of the value from the message file.

BAAN: Mapping to the BAAN table field TFtdsls040.cfrw and conversion with BAAN table TBtcedi318.

Position	<b>16</b>	Field format	<b>an..30</b>	Field status	<b>C</b>
Field name	<b>Reference A</b>				

Description: This field contains a reference. You can use this field to give further information to your supplier.

Processing outgoing

EDI Sub-System:

BAAN: The Reference A of the purchase order from BAAN table field TFtdpur040.refa is mapped to this position.

Processing incoming

EDI Sub-System:

BAAN: None.

Position	<b>17</b>	Field format	<b>an..20</b>	Field status	<b>C</b>
Field name	<b>Reference B</b>				

Description: This field contains a second reference field for further information defined with the relation.

Processing outgoing

EDI Sub-System:

BAAN: The Reference B of the purchase order from BAAN table field TFtdpur040.refb is mapped to this position.

Processing incoming

EDI Sub-System:

BAAN: Transmission of the value from the message file.  
Mapping to the BAAN table field TFtdsls040.refb

Position	<b>18</b>	Field format	<b>an2</b>	Field status	<b>M</b>
Field name	<b>Qualifier Address Code 1</b>				

Description: This field contains the first Qualifier for the Delivery Address Code.

Processing outgoing

EDI Sub-System:

BAAN: The field is filled with the constant value "DP".

Processing incoming

EDI Sub-System: This field is filled with the constant value "DP".

BAAN: This Qualifier identifies the position 22 as a delivery address code. Fill "DP" in the BAAN table TBtcedi224 as a Code for delivery addresses for the used Organization.

Position	<b>19</b>	Field format	<b>an2</b>	Field status	<b>M</b>
Field name	<b>Qualifier Address Code 2</b>				

Description: This field contains the second Qualifier for the Delivery Address Code. "ZZ" means, that the used Address Codes are mutual defined with the relation.

Processing outgoing

EDI Sub-System:

BAAN: The field is filled with the constant value "ZZ".

Processing incoming

EDI Sub-System: This field is filled with the constant value "ZZ".

BAAN: This Qualifier identifies the position 22 as a delivery address code. Fill "ZZ" in the BAAN table TBtcedi218 as a Code for delivery addresses for the used Organization.

Position	<b>20</b>	Field format	<b>an2</b>	Field status	<b>M</b>
Field name	<b>Qualifier Address Code 3</b>				

Description: This field contains the third Qualifier for the Invoice Address Code. "IP" means, that the used Address Codes are mutual defined with the relation.

Processing outgoing

EDI Sub-System:

BAAN: The field is filled with the constant value "IP".

Processing incoming

EDI Sub-System: This field is filled with the constant value "IP".

BAAN: Only necessary if you want to read in an invoice address by a code. Therefor insert the BAAN table field TFtdsls040.ccor in the conversion setup. This Qualifier identifies the invoice address code. Fill "IP" in the BAAN table TBtcedi218 as a Code for invoice addresses for the used Organization.

Position	<b>21</b>	Field format	<b>an2</b>	Field status	<b>M</b>
Field name	<b>Qualifier Address Code 4</b>				

Description: This field contains the third Qualifier for the Invoice Address Code. "IZ" means, that the used Address Codes are mutual defined with the relation.

Processing outgoing

EDI Sub-System:

BAAN:

The field is filled with the constant value "IZ".

Processing incoming

EDI Sub-System:

This field is filled with the constant value "IZ".

BAAN:

Only necessary if you want to read in an invoice address by a code. Therefor insert the BAAN table field TFtdsls040.ccor in the conversion setup. This Qualifier identifies the invoice address code. Fill "IZ" in the BAAN table TBtcedi224 as a Code for invoice addresses for the used Organization.



Position	<b>22</b>	Field format	<b>an..20</b>	Field status	<b>C</b>
Field name	<b>Warehouse Code (if supported)</b>				

Description: This field contains a Code for the Warehouse. This can be used instead of a concrete address, if the codes are mutual defined with the supplier/customer.

Processing outgoing

EDI Sub-System:

BAAN: The warehouse code of the purchase order from BAAN table field TFtdpur040.cwar is mapped to this position and converted with BAAN table TBtcedi462.

Processing incoming

EDI Sub-System:

Transmission of the value from the message file.

BAAN:

To support a warehouse code, the BAAN table field TFtdsls040.cdel must be inserted in the conversion setup on position 22. If the warehouse code is used, the delivery address (SA4) is not supported.

Mapping to the BAAN table field TFtdsls040.cdel and conversion with BAAN table TBtcedi310. For conversion the qualifier position 19 must be used as qualifier 1 and position 18 must be used as qualifier 2 in tcedi501 behind the field tds040.cdel. In BAAN table TBtcedi218 "ZZ" and in BAAN table TBtcedi224 "DP" for delivery address must be filled.

Position	<b>23</b>	Field format	<b>an..20</b>	Field status	<b>C</b>
Field name	<b>Suppliers Delivery Point Number Coded</b>				

Description: This field contains the Code for the Suppliers Delivery Point. It is the converted Code from the warehouse (position 20).

Processing outgoing

EDI Sub-System:

BAAN: The converted code for the warehouse from the purchase order from BAAN table field TFtcedi462.codm is mapped to this position.

Processing incoming

EDI Sub-System:

BAAN: None.

Position	<b>24</b>	Field format	<b>an..3</b>	Field status	<b>C</b>
Field name	<b>Price List</b>				

Description: This field contains the purchase/sales price list  
The Code must be mutual defined with the customer/supplier. A conversion is not possible.

Processing outgoing

EDI Sub-System:

BAAN: The Code of the used purchase price list of the purchase order from BAAN table field TFtdpur040.cplp is mapped to this position.

Processing incoming

EDI Sub-System:

BAAN: Mapping to the BAAN table field TFtdsls040.cpls

Position	<b>25</b>	Field format	<b>an..3</b>	Field status	<b>C</b>
Field name	<b>Region</b>				

Description: This field contains the Region the customer/supplier belongs to. The Code must be mutual defined with the customer/supplier. A conversion is not possible.

Processing outgoing

EDI Sub-System:

BAAN: The code of the region of the purchase order from BAAN table field TFtdpur040.creg is mapped to this position.

Processing incoming

EDI Sub-System: Transmission of the value from the message file.

BAAN: Mapping to the BAAN table field TFtdsls040.creg

Position	<b>26</b>	Field format	<b>n..6</b>	Field status	<b>C</b>
Field name	<b>Line of Business</b>				

Description: This field contains the Code for the Line of Business the customer/supplier belongs to. The Code must be mutual defined with the customer/supplier. A conversion is not possible.

Processing outgoing

EDI Sub-System:

BAAN: The code of the region of the purchase order from BAAN table field TFtdpur040.cbrn is mapped to this position.

Processing incoming

EDI Sub-System: Transmission of the value from the message file.

BAAN: Mapping to the BAAN table field TFtdsls040.cbrn

Data record description by kind of data record

---

Position	<b>27</b>	Field format	<b>n..8</b>	Field status	<b>C</b>
Field name	<b>Planned Receipt Date</b>				

Description: This field contains the date (YYYYMMDD) the delivery is planned to be receipt by the customer. If no planned receipt date is available it must be the same date like the delivery date (position7).

Processing outgoing

EDI Sub-System:

BAAN: None.

Processing incoming

EDI Sub-System: Transmission of the value from the message file.

BAAN: Mapping to the BAAN table field  
TFtdsls040.prdt

Position	<b>28</b>	Field format	<b>an7</b>	Field status	<b>M</b>
Field name	<b>Data record end sign</b>				

Description: This field indicates the end of the data record. It contains the constant value 'SA2\_END'.

Processing outgoing

EDI Sub-System:

BAAN: This field will be filled with the constant value 'SA2\_END'.

Processing incoming

EDI Sub-System: This field will be filled with the constant value 'SA2\_END'.

BAAN: None

**SA3 ORDER TEXT - TEXTDATEN**

Status : Conditional  
 Frequency : Once by order number  
 Description: This data record contains the text information of the order header and is related to SA2.

<i>ORDERS) INHOUSE FORMAT</i>					<i>Mapping from Application Table Fields</i>		<i>Mapping to Application Fields</i>	
<i>Pos</i>	<i>FIELD DESCRIPTION</i>	<i>Key</i>	<i>ST</i>	<i>FM</i>	<i>Table Field</i>	<i>Action</i>	<i>Table Field</i>	<i>Action</i>
1.	Kind of data record	O/I	M	an3	SA3		SA3	
2.	Message reference	O/I	M	an..14	tcedi701.bano		tcedi702.bano	
3.	Supplier code (out)	O	M	an..6	tcedi028.neta	Conversion		Conversion (see below)
	Network address customer (in)	I	M	an..17			tdsls040.cuno	
4.	Order Number	O/I	M	n..6 an..30 an..30	tdpur040.orno		tdsls040.refa tdsls040.eono	Baan IVc
5.	Free text 1		C	an..70	tdpur040.txta		tdsls040.txta	
6.	Free text 2		C	an..70	tdpur040.txta		tdsls040.txta	
7.	Free text 3		C	an..70	tdpur040.txta		tdsls040.txta	
8.	Free text 4		C	an..70	tdpur040.txta		tdsls040.txta	
9.	Free text 5		C	an..70	tdpur040.txta		tdsls040.txta	
10.	Data record end sign		M	an7	SA3_END		SA3_END	

<b>Detailed Description:</b>	<b>Order</b>
<b>Kind of data record:</b>	<b>SA3 Order text</b>

Position	<b>1</b>	Field format	<b>an3</b>	Field status	<b>M</b>
Field name		<b>Kind of data record</b>		(Key field out/in)	

Description: This field identifies the kind of data record in the message block. It contains the constant value 'SA3'.

Processing outgoing

EDI Sub-System:

BAAN: This field will be filled with the constant value 'SA3'.

Processing incoming

EDI Sub-System: This field will be filled with the constant value 'SA3'.

BAAN: None

Position	<b>2</b>	Field format	<b>an..14</b>	Field status	<b>M</b>
Field name		<b>Message reference</b>		(Key field out/in)	

Description: This field identifies all connected data records of one Order. The numbering of the message reference, which has to be clear by Order, helps to control the chronological order of the Orders and the complete transmission.

Processing outgoing

EDI Sub-System:

BAAN: Refer to data record SA2.

Processing incoming

EDI Sub-System: Refer to data record SA2.

BAAN: Refer to data record SA2.

Position	<b>3 out</b>	Field format	<b>an..6</b>	Field status	<b>M</b>
Field name	<b>Supplier Number</b>		(Key field out/in)		

Description: This field contains the identification which the customer applied to the supplier.

Processing outgoing

EDI Sub-System:

BAAN: Refer to data record SA2.

Position	<b>3 in</b>	Field format	<b>an..17</b>	Field status	<b>M</b>
Field name	<b>Networkaddress customer</b>		(Key field out/in)		

Description: This field contains the network address of the customer.

Processing incoming

EDI Sub-System: Refer to data record SA2.

BAAN: Refer to data record SA2.

Position	<b>4</b>	Field format	<b>out n..6 / in an..30</b>	Field status	<b>M</b>
Field name	<b>Order Number</b>		(Key field in/out)		

Description: This field contains the order number.

Processing outgoing

EDI Sub-System:

BAAN: The order number of the purchase order from BAAN table field TFtdpur040.orno is mapped to this position.

Processing incoming

EDI Sub-System: Transmission of the value from the message file.

BAAN: Mapping to BAAN table field TFtdsls040.refa  
Baan IVc: Mapping to BAAN table field TFtdsls040.eono

Position	<b>5</b>	Field format	<b>an..70</b>	Field status	<b>C</b>
Field name	<b>Free text 1</b>				

Description: This field contains a free text with a maximum of 70 characters.

Processing outgoing

EDI Sub-System:

BAAN: Mapping of BAAN table field TFtdpur040.txta to position.

Processing incoming

EDI Sub-System: Transmission of the value from the transmission file.

BAAN: Mapping to BAAN table field TFtdsls040.txta



Position	<b>6</b>	Field format	<b>an..70</b>	Field status	<b>C</b>
Field name	<b>Free text 2</b>				

Description: This field contains a free text with a maximum of 70 characters.

Processing outgoing

EDI Sub-System:

BAAN: Mapping of BAAN table field TFtdpur040.txta to position.

Processing incoming

EDI Sub-System: Transmission of the value from the transmission file.

BAAN: Mapping to BAAN table field TFtdsls040.txta

Position	<b>7</b>	Field format	<b>an..70</b>	Field status	<b>C</b>
Field name	<b>Free text 3</b>				

Description: This field contains a free text with a maximum of 70 characters.

Processing outgoing

EDI Sub-System:

BAAN: Mapping of BAAN table field TFtdpur040.txta to position.

Processing incoming

EDI Sub-System: Transmission of the value from the transmission file.

BAAN: Mapping to BAAN table field TFtdsls040.txta

**Data record description by kind of data record**

---

Position	<b>8</b>	Field format	<b>an..70</b>	Field status	<b>C</b>
Field name	<b>Free text 4</b>				

Description: This field contains a free text with a maximum of 70 characters.

Processing outgoing

EDI Sub-System:

BAAN: Mapping of BAAN table field TFtdpur040.txta to position.

Processing incoming

EDI Sub-System: Transmission of the value from the transmission file.

BAAN: Mapping to BAAN table field TFtdsls040.txta

Position	<b>9</b>	Field format	<b>an..70</b>	Field status	<b>C</b>
Field name	<b>Free text 5</b>				

Description: This field contains a free text with a maximum of 70 characters.

Processing outgoing

EDI Sub-System:

BAAN: Mapping of BAAN table field TFtdpur040.txta to position.

Processing incoming

EDI Sub-System: Transmission of the value from the transmission file.

BAAN: Mapping to BAAN table field TFtdsls040.txta

Position	<b>10</b>	Field format	<b>an7</b>	Field status	<b>M</b>
Field name	<b>Data record end sign</b>				

Description: This field indicates the end of the data record. It contains the constant value 'SA3\_END'.

Processing outgoing

EDI Sub-System:

BAAN: This field will be filled with the constant value 'SA3\_END'.

Processing incoming

EDI Sub-System: This field will be filled with the constant value 'SA3\_END'.

BAAN: None

## SA4 Order Delivery and Invoice Addresses

Status : Conditional  
 Frequency : Twice at maximum by order number  
 Description: This data record contains the Delivery and the Invoice Addresses of the order header and is related to SA2.

### First Appearance: Delivery Address ( Address Qualifier: 0 )

<i>ORDER INHOUSE FORMAT</i>					<i>Mapping from Application Table Fields</i>		<i>Mapping to Application Fields</i>	
<i>Pos</i>	<i>FIELD DESCRIPTION</i>	<i>Key</i>	<i>ST</i>	<i>FM</i>	<i>Table Field</i>	<i>Action</i>	<i>Table Field</i>	<i>Action</i>
1.	Kind of data record	O/I	M	an3	SA4		SA4	
2.	Message reference	O/I	M	an..14	tcedi701.bano		tcedi702.bano	
3.	Supplier code (out)	O	M	an..6	tcedi028.neta	Conversion	tdsls040.cuno	Conversion (see below)
	Network address customer (in)	I	M	an..17				
4.	Order Number	O/I	M	n..6	tdpur040.orno		tdsls040.refa	für Baan IVc
				an..30				
				an..30				
5.	Address Qualifier Delivery Address		M	an1	"0"		tdsls042.ckor	EDI Sub-System: "0" and Code and Conversion

**Data record description by kind of data record**

<i>ORDER INHOUSE FORMAT</i>					<i>Mapping from Application Table Fields</i>		<i>Mapping to Application Fields</i>	
<i>Pos</i>	<i>FIELD DESCRIPTION</i>	<i>Key</i>	<i>ST</i>	<i>FM</i>	<i>Table Field</i>	<i>Action</i>	<i>Table Field</i>	<i>Action</i>
6.	Delivery Address Country		C	an..6	tcms003.ccty tdpur042.ccty	PCD PSD and Code and Conversion	tdsls042.ccty	Code and Conversion
7.	Delivery Address first part of the name		C	an..35	tcms003.nama tdpur042.nama	PCD PSD	tdsls042.nama	
8.	Delivery Address second part of the name		C	an..30	tcms003.namb tdpur042.namb	PCD PSD	tdsls042.namb	
9.	Delivery Address		C	an..30	tcms003.namc tdpur042.namc	PCD PSD	tdsls042.namc	
10.	Delivery Address 2		C	an..30	tcms003.namd tdpur042.namd	PCD PSD	tdsls042.namd	
11.	Delivery Address City		C	an..30	tcms003.name tdpur042.name	PCD PSD	tdsls042.name	
12.	ILN Code, Delivery Address. further information for city e.g. province/country		C	an..30	tcms003.namf tdpur042.namf	PCD PSD		
13.	Delivery Address Zip Code		C	an..10	tcms003.pstc tdpur042.pstc	PCD PSD	tdsls042.pstc	

Data record description by kind of data record

<i>ORDER INHOUSE FORMAT</i>					<i>Mapping from Application Table Fields</i>		<i>Mapping to Application Fields</i>	
<i>Pos</i>	<i>FIELD DESCRIPTION</i>	<i>Key</i>	<i>ST</i>	<i>FM</i>	<i>Table Field</i>	<i>Action</i>	<i>Table Field</i>	<i>Action</i>
14.								
15.								
16.	TAX Code Id Qualifier		M	an3	“VAT”	PCD PSD		
17.	Data record end sign		M	an7	SA4_END	PCD PSD	SA4_END	

**Second Appearance: Invoice Address  
( Address Qualifier: 1 )**

<i>ORDER INHOUSE FORMAT</i>					<i>Mapping from Application Table Fields</i>		<i>Mapping to Application Fields</i>	
<i>Pos</i>	<i>FIELD DESCRIPTION</i>	<i>Key</i>	<i>ST</i>	<i>FM</i>	<i>Table Field</i>	<i>Action</i>	<i>Table Field</i>	<i>Action</i>
1.	Kind of data record	O/I	M	an3	SA4		SA4	
2.	Message reference	O/I	M	an..14	tcedi701.bano		tcedi702.bano	
3.	Supplier code (out)	O	M	an..6	tdpur040.suno			Conversion (see below)
	Network address customer (in)	I	M	an..17			tdsls040.cuno	
4.	Order Number	O/I	M	n..6 an..30 an..30	tdpur040.orno		tdsls040.refa tdsls040.eono	für Baan IVc
5.	Address Qualifier Invoice Address		M	an1	“1”		tdsls042.ckor	EDI Sub-System: “1” and Code and Conversion

**Data record description by kind of data record**

<i>ORDER INHOUSE FORMAT</i>					<i>Mapping from Application Table Fields</i>		<i>Mapping to Application Fields</i>	
<i>Pos</i>	<i>FIELD DESCRIPTION</i>	<i>Key</i>	<i>ST</i>	<i>FM</i>	<i>Table Field</i>	<i>Action</i>	<i>Table Field</i>	<i>Action</i>
6.	Invoice Address: Country Code of the Country where the company is established		C	an..6	tccom000.ccty	Code and Conversion	tdsls042.ccty	Code and Conversion
7.	Invoice Address: Company's Name		C	an..30	tccom000.nama		tdsls042.nama	
8.	Invoice Address: second part of the Company Name		C	an..30	tccom000.namb		tdsls042.namb	
9.	Invoice Address: First Part of the Company Address		C	an..30	tccom000.namc		tdsls042.namc	
10.	Invoice Address: Second Part of the Company Address		C	an..30	tccom000.namd		tdsls042.namd	
11.	Invoice Address: City where the company is established		C	an..30	tccom000.name		tdsls042.name	
12.	Invoice Address: Second part of the name of the City where the company is established		C	an..30	tccom000.namf		tdsls042.namf	
13.	Invoice Address: Zip Code		C	an..10	tccom000.pstc		tdsls042.pstc	
14.	Customer's Tax ID		C	an..20	tccom000.vatn			
15.	Customer's Tax ID of Fiscal Unit		C	an..20	tccom000.vath			
16.	TAX Code Id Q		M	an3	"VAT"			

Data record description by kind of data record

<i>ORDER INHOUSE FORMAT</i>					<i>Mapping from Application Table Fields</i>		<i>Mapping to Application Fields</i>	
<i>Pos</i>	<i>FIELD DESCRIPTION</i>	<i>Key</i>	<i>ST</i>	<i>FM</i>	<i>Table Field</i>	<i>Action</i>	<i>Table Field</i>	<i>Action</i>
17.	Data record end sign		M	an7	SA4_END		SA4_END	

Evaluation Expression : PCD strip(tdpur040.cwar) <> ""

Evaluation Expression : PSD tdpur042.orno <> 0 and tdpur042.ckor = 0

**Detailed description:** Order Delivery and Invoice Adresses  
**Kind of data record:** SA4 Order Delivery and Invoice Adresses

**First Appearance: Delivery Address  
 ( Address Qualifier: 0 )**

Position	<b>1</b>	Field format	<b>an3</b>	Field status	<b>M</b>
Field name	<b>Kind of data record</b>		(Key field out/in)		

Description: This field identifies the kind of data record in the message block. It contains the constant value 'SA4'.

Processing outgoing

EDI Sub-System:

BAAN: This field will be filled with the constant value 'SA4'.

Processing incoming

EDI Sub-System: This field will be filled with the constant value 'SA4'.

BAAN:



Position	<b>2</b>	Field format	<b>an..14</b>	Field status	<b>M</b>
Field name	<b>Message reference</b>		(Key field out/in)		

Description: This field identifies all connected data records of one order. The numbering of the message reference, which has to be clear by Order, helps to control the chronological order of the Orders and the complete transmission.

Processing outgoing

EDI Sub-System:

BAAN: Refer to data record SA2.

Processing incoming

EDI Sub-System: Refer to data record SA2

BAAN:

Position	<b>3 out</b>	Field format	<b>an..6</b>	Field status	<b>M</b>
Field name	<b>Supplier code</b>		(Key field out)		

Description: This field contains the identification code of the supplier on the customer side.

Processing outgoing

EDI Sub-System:

BAAN: Refer to data record SA2

**Data record description by kind of data record**

---

Position	<b>3 in</b>	Field format	<b>an..17</b>	Field status	<b>M</b>
Field name	<b>Network address customer</b>			(Key field in)	

Description: This field contains the network address of the customer.

Processing incoming

EDI Sub-System: Refer to data record SA2

BAAN: Refer to data record SA2

Position	<b>4</b>	Field format	<b>out n..6 / in an..30</b>	Field status	<b>M</b>
Field name	<b>Order Number</b>			(Key field in/out)	

Description: This field contains the order number.

Processing outgoing

EDI Sub-System: None.

BAAN: The purchase order number is mapped from BAAN table field TFtdpur040 to this position.

Processing incoming

EDI Sub-System: Transmission of the value from the message file.

BAAN: Mapping to BAAN table field TFtdsls040.refa

Baan IVc: Mapping to BAAN table field TFtdsls040.eono

Position	<b>5</b>	Field format	<b>an1</b>	Field status	<b>M</b>
Field name	<b>Address Qualifier Delivery Address</b>				

Description: This field contains the Qualifier which identifies the next data set as an invoice or an delivery address.

0 The following data is the delivery address

1 The following data is the invoice address

This qualifier must be entered in BAAN table TBtcedi224 regarding to the used organization.

Processing outgoing

EDI Sub-System:

BAAN: The value "0" is filled in from BAAN table field tcedi224.code.

Processing incoming

EDI Sub-System:

The value "0" is filled in this position.

BAAN: Mapping to BAAN table field TFtdsls042.ckor and Conversion with TBtcedi224..

Position	<b>6</b>	Field format	<b>an..6</b>	Field status	<b>C</b>
Field name	<b>Delivery Address Country</b>				

Description: This field contains the Country of the Address. The following country codes are defined in BAAN table TBtcedi226 according to ODDC 6

- AT: Austria
- BE: Belgium
- CH: Switzerland
- DE: Federal Republik of Germany**
- DK: Denmark
- ES: Spain
- FI: Finland
- FR: France
- GB: United Kingdom
- GR: Greece**
- IE: Ireland
- IT: Italy
- LU: Luxembourg
- NL: Netherlands
- NO: Norway
- PT: Portugal
- SE: Sweden
- TR: Turkey
- YU: Yugoslavia

Processing outgoing

EDI Sub-System:

BAAN: The country code of the delivery address from BAAN table field TFtdpur042.ccty or tcms003.ccty is mapped to this position and converts with BAAN table TBtcedi440.

Processing incoming

EDI Sub-System:

Transmission of the value from the message file.

BAAN:

Mapping to the BAAN table field TFtdsls042.ccty and conversion with BAAN table TBtcedi302.

Position	<b>7</b>	Field format	<b>an..35</b>	Field status	<b>C</b>
Field name	<b>Delivery Address First part of Name</b>				

Description: This field contains the first part of the name.

Processing outgoing

EDI Sub-System:

BAAN: The First part of the Name from BAAN table field TFtdpur042.nama or tcmcs003.nama is mapped to this position.

Processing incoming

EDI Sub-System: Transmission of the value from the message file.

BAAN: Mapping to the BAAN table field TFtdsls042.nama

Position	<b>8</b>	Field format	<b>an..30</b>	Field status	<b>C</b>
Field name	<b>Delivery Address Second part of Name</b>				

Description: This field contains the second part of the name.

Processing outgoing

EDI Sub-System:

BAAN: The Second part of the Name from BAAN table field TFtdpur042.namb or tcmcs003.namb is mapped to this position.

Processing incoming

EDI Sub-System: Transmission of the value from the message file.

BAAN: Mapping to the BAAN table field TFtdsls042.namb

Position	<b>9</b>	Field format	<b>an..30</b>	Field status	<b>C</b>
Field name	<b>Delivery Address</b>				

Description: This field contains the first part of the Delivery Address.

Processing outgoing

EDI Sub-System:

BAAN: The first part of the Address from BAAN table field TFtdpur042.namc or tcmcs003.namc is mapped to this position.

Processing incoming

EDI Sub-System: Transmission of the value from the message file.

BAAN: Mapping to the BAAN table field TFtdsls042.namc

Position	<b>10</b>	Field format	<b>an..30</b>	Field status	<b>C</b>
Field name	<b>Delivery Address 2</b>				

Description: This field contains the second part of the delivery address.

Processing outgoing

EDI Sub-System:

BAAN: The second part of the Delivery Address from BAAN table field TFtdpur042.namd or tcmcs003.namd is mapped to this position.

Processing incoming

EDI Sub-System: Transmission of the value from the message file.

BAAN: Mapping to the BAAN table field TFtdsls042.namd

Position	<b>11</b>	Field format	<b>an..30</b>	Field status	<b>C</b>
Field name	<b>Delivery Address City</b>				

Description: This field contains the name of the City.

Processing outgoing

EDI Sub-System:

BAAN: The name of the City from BAAN table field TFtdpur042.name or tcmcs003. name is mapped to this position.

Processing incoming

EDI Sub-System: Transmission of the value from the message file.

BAAN: Mapping to the BAAN table field TFtdsls042.name

Position	<b>12</b>	Field format	<b>an..30</b>	Field status	<b>C</b>
Field name	<b>ILN Code / Delivery Address for further information province or country</b>				

Description: This field contains further information to the City (province/country)

Processing outgoing

EDI Sub-System:

BAAN: The ILN-Code BAAN table field TFtdpur042.namf or tcmcs003.namf is mapped to this position or.

Processing incoming

EDI Sub-System: Transmission of the value from the message file.

BAAN: Empty

Position	<b>13</b>	Field format	<b>an..10</b>	Field status	<b>C</b>
Field name	<b>Delivery Address Zip Code</b>				

Description: This field contains the postal or zip Code referring to the Delivery Address.

Processing outgoing

EDI Sub-System:

BAAN: The Zip Code from BAAN table field TFtdpur042.pstc or tcmcs003.pstc is mapped to this position.

Processing incoming

EDI Sub-System: Transmission of the value from the message file.

BAAN: Mapping to the BAAN table field TFtdsls042.pstc

Position	<b>14</b>	Field format	<b>an..20</b>	Field status	<b>C</b>
Field name	<b>Tax ID</b>				

Description: This field contains the Tax ID. Outgoing it is my own Tax ID, Incoming the Tax ID of the customer.

Processing outgoing

EDI Sub-System:

BAAN: None.

Processing incoming

EDI Sub-System:

BAAN: None.



Position	<b>15</b>	Field format	<b>an..20</b>	Field status	<b>C</b>
Field name	<b>Tax ID of Fiscal Unit</b>				

Description: This field contains the tax ID of the fiscal unit if it is a different one.

Processing outgoing

EDI Sub-System:

BAAN: None.

Processing incoming

EDI Sub-System:

BAAN: None.

Position	<b>16</b>	Field format	<b>an3</b>	Field status	<b>M</b>
Field name	<b>Tax ID Qualifier</b>				

Description: This field contains the Tax Code ID Qualifier "VAT".

Processing outgoing

EDI Sub-System:

BAAN: This field is filled with the constant value "VAT".

Processing incoming

EDI Sub-System:

BAAN: None

Position	<b>17</b>	Field format	<b>an7</b>	Field status	<b>M</b>
Field name	<b>Data record end sign</b>				

Description: This field indicates the end of the data record. It contains the constant value 'SA4\_END'.

Processing outgoing

EDI Sub-System:

BAAN: This field will be filled with the constant value 'SA4\_END'.

Processing incoming

EDI Sub-System: This field will be filled with the constant value 'SA4\_END'.

BAAN: None

**Second Appearance: Invoice Address  
( Address Qualifier: 1 )**

Position	<b>1</b>	Field format	<b>an3</b>	Field status	<b>M</b>
Field name	<b>Kind of data record</b>		(Key field out/in)		

Description: This field identifies the kind of data record in the message block. It contains the constant value 'SA4'.

Processing outgoing

EDI Sub-System:

BAAN: This field will be filled with the constant value 'SA4'.

Processing incoming

EDI Sub-System: This field will be filled with the constant value 'SA4'.

BAAN:

Position	<b>2</b>	Field format	<b>an..14</b>	Field status	<b>M</b>
Field name	<b>Message reference</b>		(Key field out/in)		

Description: This field identifies all connected data records of one order. The numbering of the message reference, which has to be clear by Order, helps to control the chronological order of the Orders and the complete transmission.

Processing outgoing

EDI Sub-System:

BAAN: Refer to data record SA2.

Processing incoming

EDI Sub-System: Refer to data record SA2

BAAN:

Position	<b>3 out</b>	Field format	<b>an..6</b>	Field status	<b>M</b>
Field name	<b>Supplier code</b>		(Key field out)		

Description: This field contains the identification code of the supplier on the customer side.

Processing outgoing

EDI Sub-System:

BAAN: Refer to data record SA2

Position	<b>3 in</b>	Field format	<b>an..17</b>	Field status	<b>M</b>
Field name	<b>Network address customer</b>			(Key field in)	

Description: This field contains the network address of the customer.

Processing incoming

EDI Sub-System: Refer to data record SA2

BAAN: Refer to data record SA2

Position	<b>4</b>	Field format	<b>out n..6 / in an..30</b>	Field status	<b>M</b>
Field name	<b>Order Number</b>			(Key field in/out)	

Description: This field contains the order number.

Processing outgoing

EDI Sub-System: None.

BAAN: The purchase order number is mapped from BAAN table field TFtdpur040 to this position.

Processing incoming

EDI Sub-System: Transmission of the value from the message file.

BAAN: Mapping to BAAN table field TFtdsls040.refa

Baan IVc: Mapping to BAAN table field TFtdsls040.eono

Position	<b>5</b>	Field format	<b>an1</b>	Field status	<b>M</b>
Field name	<b>Address Qualifier Invoice Address</b>				

Description: This field contains the Qualifier which identifies the next data set as an invoice or an delivery address.

0 The following data is the delivery address

1 The following data is my own invoice address

This qualifier must be entered in BAAN table TBtcedi224 regarding to the used organization.

Processing outgoing

EDI Sub-System:

BAAN:

The value "1" is filled in.

Processing incoming

EDI Sub-System:

The value "1" is filled in this position.

BAAN:

Mapping to BAAN table field TFtdsls042.ckor and Conversion with Tbtcedi224..

Position	<b>6</b>	Field format	<b>an..6</b>	Field status	<b>C</b>
Field name	<b>Invoice Address Country</b>				

Description: This field contains the Country of the Address. The following country codes are defined in BAAN table TBtcedi226 according to ODDC 6

- AT: Austria
- BE: Belgium
- CH: Switzerland
- DE: Federal Republik of Germany**
- DK: Denmark
- ES: Spain
- FI: Finland
- FR: France
- GB: United Kingdom
- GR: Greece**
- IE: Ireland
- IT: Italy
- LU: Luxembourg
- NL: Netherlands
- NO: Norway
- PT: Portugal
- SE: Sweden
- TR: Turkey
- YU: Yugoslavia

Processing outgoing

EDI Sub-System:

BAAN: The country code of the invoice address from BAAN table field TFtccom000.ccty is mapped to this position and converts with BAAN table TBtcedi440.

Processing incoming

EDI Sub-System: Transmission of the value from the message file.

BAAN: Mapping to the BAAN table field TFtdsls042.ccty and conversion with BAAN table TBtcedi302.

Position	<b>7</b>	Field format	<b>an..35</b>	Field status	<b>C</b>
Field name	<b>Invoice Address First part of Name</b>				

Description: This field contains the first part of the name.

Processing outgoing

EDI Sub-System:

BAAN: The First part of the Name from BAAN table field TFtccom000.nama is mapped to this position.

Processing incoming

EDI Sub-System: Transmission of the value from the message file.

BAAN: Mapping to the BAAN table field TFtdsls042.nama

Position	<b>8</b>	Field format	<b>an..30</b>	Field status	<b>C</b>
Field name	<b>Invoice Address Second part of Name</b>				

Description: This field contains the second part of the name.

Processing outgoing

EDI Sub-System:

BAAN: The Second part of the Name from BAAN table field TFtccom.namb is mapped to this position.

Processing incoming

EDI Sub-System: Transmission of the value from the message file.

BAAN: Mapping to the BAAN table field TFtdsls042.namb

Position	<b>9</b>	Field format	<b>an..30</b>	Field status	<b>C</b>
Field name	<b>Invoice Address</b>				

Description: This field contains the first part of the Invoice Address.

Processing outgoing

EDI Sub-System:

BAAN: The first part of the InvoiceAddress from BAAN table field TFtccom000.name is mapped to this position.

Processing incoming

EDI Sub-System: Transmission of the value from the message file.

BAAN: Mapping to the BAAN table field TFtdsls042.name

Position	<b>10</b>	Field format	<b>an..30</b>	Field status	<b>C</b>
Field name	<b>Invoice Address 2</b>				

Description: This field contains the second part of the Invoice Address.

Processing outgoing

EDI Sub-System:

BAAN: The second part of the Invoice Address from BAAN table field TFtccom000.name is mapped to this position.

Processing incoming

EDI Sub-System: Transmission of the value from the message file.

BAAN: Mapping to the BAAN table field TFtdsls042.name



Position	<b>11</b>	Field format	<b>an..30</b>	Field status	<b>C</b>
Field name	<b>Invoice Address City</b>				

Description: This field contains the name of the City.

Processing outgoing

EDI Sub-System:

BAAN: The name of the City from BAAN table field TFtccom000.name is mapped to this position.

Processing incoming

EDI Sub-System: Transmission of the value from the message file.

BAAN: Mapping to the BAAN table field TFtdsls042.name

Position	<b>12</b>	Field format	<b>an..30</b>	Field status	<b>C</b>
Field name	<b>Invoice Address for further information province or country</b>				

Description: This field contains further information to the City (province/country)

Processing outgoing

EDI Sub-System:

BAAN: The second part of the City information from BAAN table field TFtccom000.namf is mapped to this position.

Processing incoming

EDI Sub-System: Transmission of the value from the message file.

BAAN: Mapping to the BAAN table field TFtdsls042.namf

**Data record description by kind of data record**

---

Position	<b>13</b>	Field format	<b>an..10</b>	Field status	<b>C</b>
Field name	<b>Invoice Address Zip Code</b>				

Description: This field contains the postal or zip Code referring to the Invoice Address.

Processing outgoing

EDI Sub-System:

BAAN: The Zip Code from BAAN table field TFtccom000.pstc is mapped to this position.

Processing incoming

EDI Sub-System: Transmission of the value from the message file.

BAAN: Mapping to the BAAN table field TFtdsls042.pstc

Position	<b>14</b>	Field format	<b>an..20</b>	Field status	<b>C</b>
Field name	<b>Tax ID</b>				

Description: This field contains the Tax ID. Outgoing it is my own Tax ID, Incoming the Tax ID of the customer.

Processing outgoing

EDI Sub-System:

BAAN: My own Tax ID (Invoice Address) from BAAN table field TFtccom000.vatn is mapped to this position .

Processing incoming

EDI Sub-System:

BAAN: None.

Position	<b>15</b>	Field format	<b>an..20</b>	Field status	<b>C</b>
Field name	<b>Tax ID of Fiscal Unit</b>				

Description: This field contains the tax ID of the fiscal unit if it is a different one.

Processing outgoing

EDI Sub-System:

BAAN: The fiscal unit of my company (Invoice Address) from BAAN table field TFFtccom000.vath is mapped to this position.

Processing incoming

EDI Sub-System:

BAAN: None.

Position	<b>16</b>	Field format	<b>an3</b>	Field status	<b>M</b>
Field name	<b>Tax ID Qualifier</b>				

Description: This field contains the Tax Code ID Qualifier "VAT".

Processing outgoing

EDI Sub-System:

BAAN: This field is filled with the constant value "VAT".

Processing incoming

EDI Sub-System:

BAAN: None

**Data record description by kind of data record**

---

Position	<b>17</b>	Field format	<b>an7</b>	Field status	<b>M</b>
Field name	<b>Data record end sign</b>				

Description: This field indicates the end of the data record. It contains the constant value 'SA4\_END'.

Processing outgoing

EDI Sub-System:

BAAN: This field will be filled with the constant value 'SA4\_END'.

Processing incoming

EDI Sub-System: This field will be filled with the constant value 'SA4\_END'.

BAAN: None

## SA5 Order Lines

Status : Mandatory  
 Frequency : Multiple times per order number  
 Description: This data records contain the information about the ordered items. It is related to SA2.

<i>ORDER INHOUSE FORMAT</i>					<i>Mapping from Application Table Fields</i>		<i>Mapping to Application Fields</i>	
<i>Pos</i>	<i>FIELD DESCRIPTIO N</i>	<i>Key</i>	<i>ST</i>	<i>FM</i>	<i>Table Field</i>	<i>Action</i>	<i>Table Field</i>	<i>Action</i>
1.	Kind of data record	O/I	M	an3	SA5		SA5	
2.	Message reference	O/I	M	an..14	tcedi701.bano		tcedi702.bano	
3.	Supplier code (out) Network address customer (in)	O I	M M	an..6 an..17	tcedi028.neta	Conversion	tdsls040.cuno	Conversion (see below)
4.	Order Number	O/I	M	n..6 an..30	tdpur040.orno		tdsls040.refa tdsls040.eono	für Baan IVc
5.	Order Position Number		M	n..5 an..16	tdpur041.pono		tdsls041.pono tdsls041.epos	für Baan IVc
6.	Buyer's Item Code or EAN Item Code		C	an..16	tdpur041.item	(for EAN Conversion )	tdsls041.item	Conversion
7.	Supplier's Item Code		C	an..16	tdpur041.item	Conversion		
8.	Qualifier Item Code		M	an2	SA		SA or None	depends on Conversion

**Data record description by kind of data record**

<i>ORDER INHOUSE FORMAT</i>					<i>Mapping from Application Table Fields</i>		<i>Mapping to Application Fields</i>	
<i>Pos</i>	<i>FIELD DESCRIPTION</i>	<i>Key</i>	<i>ST</i>	<i>FM</i>	<i>Table Field</i>	<i>Action</i>	<i>Table Field</i>	<i>Action</i>
9.	Description of the Item		C	an..30	tiitem001.dzca		tdsls041.txta	
10.	Item's price		C	n..15	tdpur041.pric		tdsls041.pric	
11.	Purchase Unit		C	an..6	tdpur041.cuqp	Code and Conversion	tdsls041.cuqs	Code and Conversion
12.	Ordered Quantity		C	n..15	tdpur041.oqua		tdsls041.oqua	
13.	Planned Delivery Date		C	n..8	tdpur041.ddta		tdsls041.ddta	
14.	Purchase / Sales Price Unit		C	an..3	tdpur041.cupp	Code and Conversion	tdsls041.cups	Code and Conversion
15.	Tax Code		C	an..5	tdpur041.cvat	Code and Conversion		
16.	Country Code linked to the Tax Code		C	an..6	tdpur041.ccty	Code and Conversion		
17.	Length of the Item		C	n..15	tdpur041.leng		tdsls041.leng	
18.	Width of the Item		C	n..15	tdpur041.widt		tdsls041.widt	
19.	Height or Thickness of the Item		C	n..15	tdpur041.thic		tdsls041.thic	
20.	Back Order		C	n..15	tdpur041.bqua			
21.	Discount Code 1		C	an..20	tdpur041.cdis(1)	Code- and Conversion	tdsls041.cdis(1)	Code- and Conversion

**Definition of BEMIS 1.0a Import and Export File or the message type Trading Orders**

**Data record description by kind of data record**

<i>ORDER INHOUSE FORMAT</i>					<i>Mapping from Application Table Fields</i>		<i>Mapping to Application Fields</i>	
<i>Pos</i>	<i>FIELD DESCRIPTION</i>	<i>Key</i>	<i>ST</i>	<i>FM</i>	<i>Table Field</i>	<i>Action</i>	<i>Table Field</i>	<i>Action</i>
22.	Order Line Discount Amount 1		C	n..15	tdpur041.ldam(1)		tdsls041.ldam(1)	
23.	Discount Code 2		C	an..20	tdpur041.cdis(2)	Code- and Conversion	tdsls041.cdis(2)	Code- and Conversion
24.	Order Line Discount Amount 2		C	n..15	tdpur041.ldam(2)		tdsls041.ldam(2)	
25.	Discount Code 3		C	an..20	tdpur041.cdis(3)	Code- and Conversion	tdsls041.cdis(3)	Code- and Conversion
26.	Order Line Discount Amount 3		C	n..15	tdpur041.ldam(3)		tdsls041.ldam(3)	
27.	Order Line Text 1		C	an..70	tdpur041.txta(1)		tdsls041.txta(1)	
28.	Order Line Text 2		C	an..70	tdpur041.txta(2)		tdsls041.txta(2)	
29.	Qualifier Tax Code Id		M	an3	”VAT”			
30.	Order Date		C	n..8	tdpur041.odat		tdsls041.odat	
31.	Planned Receipt Date		C	n..8	tdpur041.ddtb		tdsls041.prdt	
32.	Container		C	an..3	tdpur041.cntr		tdsls041.cntr	
33.	Order Line Discount Percentage 1		C	n..6	tdpur041.disc(1)	NNN.NN	tdsls041.disc(1)	
34.	Order Line Discount Percentage 2		C	n..6	tdpur041.disc(2)	NNN.NN	tdsls041.disc(2)	

**Definition of BEMIS 1.0a Import and Export File or the message type Trading Orders**

**Data record description by kind of data record**

<i>ORDER INHOUSE FORMAT</i>					<i>Mapping from Application Table Fields</i>		<i>Mapping to Application Fields</i>	
<i>Pos</i>	<i>FIELD DESCRIPTION</i>	<i>Key</i>	<i>ST</i>	<i>FM</i>	<i>Table Field</i>	<i>Action</i>	<i>Table Field</i>	<i>Action</i>
35.	Order Line Discount Percentage 3		C	n..6	tdpur041.disc(3)	NNN.NN	tdsls041.disc(3)	
36.	Data record end sign		M	an7	SA5_END		SA5_END	

**Detailed description:** Order Lines  
**Kind of data record:** SA5 Order Lines

Position	<b>1</b>	Field format	<b>an3</b>	Field status	<b>M</b>
Field name		<b>Kind of data record</b>		(Key field out/in)	

Description: This field identifies the kind of data record in the message block. It contains the constant value 'SA5'.

Processing outgoing

EDI Sub-System:

BAAN: This field will be filled with the constant value 'SA5'.

Processing incoming

EDI Sub-System: This field will be filled with the constant value 'SA5'.

BAAN:



Position	<b>2</b>	Field format	<b>an..14</b>	Field status	<b>M</b>
Field name	<b>Message reference</b>		(Key field out/in)		

Description: This field identifies all connected data records of one order. The numbering of the message reference, which has to be clear by Order, helps to control the chronological order of the Orders and the complete transmission.

Processing outgoing

EDI Sub-System:

BAAN: Refer to data record SA2.

Processing incoming

EDI Sub-System: Refer to data record SA2

BAAN:

Position	<b>3 out</b>	Field format	<b>an..6</b>	Field status	<b>M</b>
Field name	<b>Supplier code</b>		(Key field out)		

Description: This field contains the identification code of the supplier on the customer side.

Processing outgoing

EDI Sub-System:

BAAN: Refer to data record SA2

**Data record description by kind of data record**

---

Position	<b>3 in</b>	Field format	<b>an..17</b>	Field status	<b>M</b>
Field name	<b>Network address customer</b> (Key field in)				

Description: This field contains the network address of the customer.

Processing incoming

EDI Sub-System: Refer to data record SA2

BAAN: Refer to data record SA2

Position	<b>4</b>	Field format	<b>out n..6 / in an..30</b>	Field status	<b>M</b>
Field name	<b>Order Number</b> (Key field in/out)				

Description: This field contains the order number.

Processing outgoing

EDI Sub-System: None.

BAAN: The purchase order number is mapped from BAAN table field TFtdpur040 to this position.

Processing incoming

EDI Sub-System: Transmission of the value from the message file.

BAAN: Mapping to BAAN table field TFtdsls040.refa

Baan IVc: Mapping to BAAN table field TFtdsls040.eono

Position	<b>5</b>	Field format	<b>n..5</b>	Field status	<b>M</b>
Field name	<b>Order Position Number</b>				

Description: This field contains the Order Position Number.

Processing outgoing

EDI Sub-System:

BAAN: The order line number of the lines of the purchase order from BAAN table field TFtdpur041.pono is mapped to this position.

Processing incoming

EDI Sub-System: Transmission of the value from the message file.

BAAN: Mapping to BAAN table field TFtdsls041.pono

Baan IVc: Mapping to BAAN table field TFtdsls041.epos **Field Format: an..16**

Position	<b>6</b>	Field format	<b>an..16</b>	Field status	<b>C</b>
Field name	<b>Buyer's Item Code / EAN Item Code</b>				

Description: This field contains the Buyer's Item Code.

Processing outgoing

EDI Sub-System:

BAAN: The item code from BAAN table field TFtdpur04.item is mapped to this position. If the buyer wants to send out the EAN Item Code a conversion is needed. This means that the buyers item code has to convert using the code and conversion table Tbtcedi444. Furthermore please notice, that the conversion setup has to be adapted to the demand under the use of the qualifier "SA".

Processing incoming

EDI Sub-System: Transmission of the value from the message file.

BAAN: Mapping to the BAAN table field TFtdsls041.item after conversion with qualifier "SA". If no conversion should take place, the Qualifier on position 8 must be empty.

Position	<b>7</b>	Field format	<b>an..16</b>	Field status	<b>C</b>
Field name	<b>Supplierer's item code</b>				

Description: This field contains the Supplier item Code.

Processing outgoing

EDI Sub-System:

BAAN: The supplier item code from BAAN table field TFtdpur041.item is mapped to this position after conversion with qualifier "SA".

Processing incoming

EDI Sub-System: Transmission of the value from the message file.

BAAN: See position 6.

Position	<b>8</b>	Field format	<b>an2</b>	Field status	<b>C</b>
Field name	<b>Qualifier Item Code</b>				

Description: This field contains the qualifier for the item code. The constant value 'SA' indicates, that the supplier item codes are used.

Processing outgoing

EDI Sub-System:

BAAN: This field will be filled with the constant value 'SA'.

Processing incoming

EDI Sub-System: This field will be filled with the constant value 'SA', if the supplier item code of position 6 is used.

BAAN: Used as qualifier for the conversion of the item code.

Position	<b>9</b>	Field format	<b>an..30</b>	Field status	<b>C</b>
Field name	<b>Description of the item</b>				

Description: This field contains the description of the item.

Processing outgoing

EDI Sub-System:

BAAN: The description of the item from BAAN table field TFtiitm001.dsca is mapped to this position.

Processing incoming

EDI Sub-System: Transmission of the value from the message file.

BAAN: Mapping to the BAAN table field TFtdsls041.txta

Position	<b>10</b>	Field format	<b>n..15</b>	Field status	<b>C</b>
Field name	<b>Price</b>				

Description: This field contains the price of the item.

Format: NNNNNNNNNN.NNNN

Processing outgoing

EDI Sub-System:

BAAN: The price from BAAN table field TFtdpur041.pric is mapped to this position.

Processing incoming

EDI Sub-System: Transmission of the value from the message file.

BAAN: Mapping to the BAAN table field TFtdsls041.pric

Position	<b>11</b>	Field format	<b>an..3</b>	Field status	<b>C</b>
Field name	<b>Purchase/Sales Unit</b>				

Description: This field contains the purchase/sales unit of the item. The coding was carried out on the basis of ODETTE-Standard ODDC 25:

Millimeter	MMT
Centimeter	CMT
Meter	MTR
Kilometer	KMT
Square millimeter	MMK
Square centimeter	CMK
Square meter	MTK
Cubic millimeter	MMQ
Cubic centimeter	CMQ
Cubic meter	MTQ
Liter	DMQ
Gram	GRM
Kilogram	KGM
Metric ton	TON
Piece	PCE

If you want to transfer additional units of measurement, you need to enter them in the session SETcedi2130m000 'Maintain units' for the company **BEM**.

Processing outgoing

EDI Sub-System:

BAAN: The purchase unit from BAAN table field TFtdpur041.cupq is mapped to this position and converted with BAAN table TBtcedi402.

Processing incoming

EDI Sub-System: Transmission of the value from the message file.

BAAN: Mapping to the BAAN table field TFtdsls041.cuqs and conversion with BAAN table TBtcedi304.

Position	<b>12</b>	Field format	<b>n..15</b>	Field status	<b>C</b>
Field name	<b>Ordered Quantity</b>				

Description: This field contains the quantity ordered on this order line.

Format: NNNNNNNNNN.NNNN

Processing outgoing

EDI Sub-System:

BAAN: The ordered quantity from BAAN table field TFtdpur041.oqua is mapped to this position.

Processing incoming

EDI Sub-System: Transmission of the value from the message file.

BAAN: Mapping to the BAAN table field TFtdsls041.oqua

Position	<b>13</b>	Field format	<b>n..8</b>	Field status	<b>C</b>
Field name	<b>Planned Delivery Date</b>				

Description: This field contains the date on which the delivery is planned or the customer wants to be delivered.

Processing outgoing

EDI Sub-System:

BAAN: The planned delivery date from BAAN table field TFtdpur041.ddta is mapped to this position.

Processing incoming

EDI Sub-System: Transmission of the value from the message file.

BAAN: Mapping to the BAAN table field TFtdsls041.ddta

Position	<b>14</b>	Field format	<b>an..6</b>	Field status	<b>C</b>
Field name	<b>Purchase/Sales Price Unit</b>				

Description: This field contains purchase/sales unit the price refers to. The coding was carried out on the basis of ODETTE-Standard ODDC 25:

Millimeter	MMT
Centimeter	CMT
Meter	MTR
Kilometer	KMT
Square millimeter	MMK
Square centimeter	CMK
Square meter	MTK
Cubic millimeter	MMQ
Cubic centimeter	CMQ
Cubic meter	MTQ
Liter	DMQ
Gram	GRM
Kilogram	KGM
Metric ton	TON
Piece	PCE

If you want to transfer additional units of measurement, you need to enter them in the session SETcedi2130m000 'Maintain units' for the company **BEM**.

Processing outgoing

EDI Sub-System:

BAAN: The purchase price unit from BAAN table field TFtdpur041.cupp is mapped to this position and converted with BAAN table TBtcedi442.

Processing incoming

EDI Sub-System:

Transmission of the value from the message file.

BAAN:

Mapping to the BAAN table field TFtdsls041.cups and conversion with BAAN table TBtcedi304 is possible.



Position	<b>15</b>	Field format	<b>an..5</b>	Field status	<b>C</b>
Field name	<b>Tax Code</b>				

Description: This field contains the tax code. The conversion is done using the BAAN table TBtcedi242 is filled.

Processing outgoing

EDI Sub-System:

BAAN: The tax code from BAAN table field TFtdpur041.cvat is mapped to this position and converted with BAAN table TBtcedi446.

Processing incoming

EDI Sub-System:

BAAN: None.

Position	<b>16</b>	Field format	<b>an..6</b>	Field status	<b>C</b>
Field name	<b>Country Code linked to tax code</b>				

Description:

This field contains the Country Code which is linked to the tax code according to ODDC 6.

AT: Austria

BE: Belgium

CH: Switzerland

**DE: Federal Republik of Germany**

DK: Denmark

ES: Spain

FI: Finland

FR: France

GB: United Kingdom

**GR: Greece**

IE: Ireland

IT: Italy

LU: Luxembourg

NL: Netherlands

NO: Norway

PT: Portugal

SE: Sweden

TR: Turkey

YU: Yugoslavia

Processing outgoing

EDI Sub-System:

BAAN:

The country code from BAAN table field Tftdpur041ccty is mapped to this position and converted with BAAN table TBtcedi440.

Processing incoming

EDI Sub-System:

BAAN:

None.

Position	<b>17</b>	Field format	<b>n..15</b>	Field status	<b>C</b>
Field name	<b>Length</b>				

Description: This field contains the length of the item based on an agreed physical unit.

Format: NNNNNNNNNN.NN

Processing outgoing

EDI Sub-System:

BAAN: The length from BAAN table field Tftdpur041.leng is mapped to this position .

Processing incoming

EDI Sub-System: Transmission of the value from the message file.

BAAN: Mapping to the BAAN table field TFtdsls041.leng

Position	<b>18</b>	Field format	<b>n..15</b>	Field status	<b>C</b>
Field name	<b>Width</b>				

Description: This field contains the width of the item based on an agreed physical unit.

Format: NNNNNNNNNN.NN

Processing outgoing

EDI Sub-System:

BAAN: The width from BAAN table field Tftdpur041.widt is mapped to this position.

Processing incoming

EDI Sub-System: Transmission of the value from the message file.

BAAN: Mapping to the BAAN table field TFtdsls041.widt

Position	<b>19</b>	Field format	<b>n..15</b>	Field status	<b>C</b>
Field name	<b>Highth</b>				

Description: This field contains the height or thickness of the item based on an agreed physical unit..

Format: NNNNNNNNNN.NN

Processing outgoing

EDI Sub-System:

BAAN: The height from BAAN table field TFtdpur041.thic is mapped to this position .

Processing incoming

EDI Sub-System: Transmission of the value from the message file.

BAAN: Mapping to the BAAN table field TFtdsls041.thic

Position	<b>20</b>	Field format	<b>an3</b>	Field status	<b>C</b>
Field name	<b>Back Order</b>				

Description: The quantity yet to be delivered by the supplier is registered as back order.

Format: NNNNNNNNNN.NNNN

Processing outgoing

EDI Sub-System:

BAAN: The back order quantity from BAAN table field TFtdpur041.bqua is mapped to this position .

Processing incoming

EDI Sub-System: Transmission of the value from the message file.

BAAN: None.

Position	<b>21</b>	Field format	<b>an..20</b>	Field status	<b>C</b>
Field name	<b>Discount Code 1</b>				

Description: This field contains the Code for the first discount and has to be agreed with the relation.

Processing outgoing

EDI Sub-System:

BAAN: The code for the first discount from BAAN table field TFtdpur041.cdis is mapped to this position and converted using BAAN table TBtcedi472.

Processing incoming

EDI Sub-System: Transmission of the value from the message file.

BAAN: Mapping to the BAAN table field TFtdsls041.cdis (1) and conversion using BAAN table TBtcedi332.

Position	<b>22</b>	Field format	<b>n..15</b>	Field status	<b>C</b>
Field name	<b>Order Line Discount Amount 1</b>				

Description: This field contains the Amount of the Order Line Discount.

Format: NNNNNNNNNN.NNNN

Processing outgoing

EDI Sub-System:

BAAN: The amount of the first discount from BAAN table field TFtdpur041.ldam(1) is mapped to this position.

Processing incoming

EDI Sub-System: Transmission of the value from the message file.

BAAN: Mapping to the BAAN table field TFtdsls041.ldam (1)

Position	<b>23</b>	Field format	<b>an..20</b>	Field status	<b>C</b>
Field name	<b>Discount Code 2</b>				

Description: This field contains the Code for the second discount and has to be agreed with the relation.

Processing outgoing

EDI Sub-System:

BAAN: The code for the first discount from BAAN table field TFtdpur041.cdis(2) is mapped to this position and converted using BAAN table TBtcedi472.

Processing incoming

EDI Sub-System: Transmission of the value from the message file.

BAAN: Mapping to the BAAN table field TFtdsls041.cdis (2) and conversion using BAAN table TBtcedi332.

Position	<b>24</b>	Field format	<b>n..15</b>	Field status	<b>C</b>
Field name	<b>Order Line Discount Amount 2</b>				

Description: This field contains the Amount of the Order Line Discount.

Format: NNNNNNNNNN.NNNN

Processing outgoing

EDI Sub-System:

BAAN: The amount of the second discount from BAAN table field TFtdpur041.ldam(2) is mapped to this position.

Processing incoming

EDI Sub-System: Transmission of the value from the message file.

BAAN: Mapping to the BAAN table field TFtdsls041.ldam (2)

Position	<b>25</b>	Field format	<b>an..20</b>	Field status	<b>C</b>
Field name	<b>Discount Code 3</b>				

Description: This field contains the Code for the third discount and has to be agreed with the relation.

Processing outgoing

EDI Sub-System:

BAAN: The code for the first discount from BAAN table field TFtdpur041.cdis(3) is mapped to this position and converted using BAAN table TBtcedi472.

Processing incoming

EDI Sub-System: Transmission of the value from the message file.

BAAN: Mapping to the BAAN table field TFtdsls041.cdis (3) and conversion using BAAN table TBtcedi332.

Position	<b>26</b>	Field format	<b>n..15</b>	Field status	<b>C</b>
Field name	<b>Order Line Discount Amount 3</b>				

Description: This field contains the Amount of the Order Line Discount.

Format: NNNNNNNNNN.NNNN

Processing outgoing

EDI Sub-System:

BAAN: The amount of the third discount from BAAN table field TFtdpur041.ldam(3) is mapped to this position.

Processing incoming

EDI Sub-System: Transmission of the value from the message file.

BAAN: Mapping to the BAAN table field TFtdsls041.ldam (3)

Position	<b>27</b>	Field format	<b>an..70</b>	Field status	<b>C</b>
Field name	<b>Order Line Text 1</b>				

Description: This field contains the first part of the order line text.

Processing outgoing

EDI Sub-System:

BAAN: The first part of the order line text from BAAN table field TFtdpur041.txta(1) is mapped to this position.

Processing incoming

EDI Sub-System: Transmission of the value from the message file.

BAAN: Mapping to the BAAN table field TFtdsls041.txta (1)

Position	<b>28</b>	Field format	<b>an..70</b>	Field status	<b>C</b>
Field name	<b>Order Line Text 2</b>				

Description: This field contains the second part of the order line text.

Processing outgoing

EDI Sub-System:

BAAN: The second part of the order line text from BAAN table field TFtdpur041.txta(2) is mapped to this position .

Processing incoming

EDI Sub-System: Transmission of the value from the message file.

BAAN: Mapping to the BAAN table field TFtdsls041.txta (2)



Position	<b>29</b>	Field format	<b>an3</b>	Field status	<b>C</b>
Field name	<b>Qualifier Tax Code ID</b>				

Description: This field contains the Qualifier for the Tax Code ID on position 15.

This tax code must be filled in BAAN table TBtceid240 to allow a conversion.

Processing outgoing

EDI Sub-System:

BAAN: The field is filled with the constant value "VAT".

Processing incoming

EDI Sub-System: The field is filled with the constant value "VAT".

BAAN: None.

Position	<b>30</b>	Field format	<b>n..8</b>	Field status	<b>C</b>
Field name	<b>Order Date</b>				

Description: The order date of the order line is the date on which the order line was entered into the system. (YYYYMMDD)

Processing outgoing

EDI Sub-System:

BAAN: The order date of the purchase order line from BAAN table field TFtdpur041.odat is mapped to this position.

Processing incoming

EDI Sub-System: Transmission of the value from the message file.

BAAN: Mapping to the BAAN table field TFtdsls041.odat

Position	<b>31</b>	Field format	<b>n..8</b>	Field status	<b>C</b>
Field name	<b>Planned Receipt Date</b>				

Description: This field contains the planned receipt date.  
Format: YYYYMMDD.

Processing outgoing

EDI Sub-System:

BAAN: The Planned Receipt Date tdpur041.ddtb from BAAN table field is mapped to this position.

Processing incoming

EDI Sub-System: Transmission of the value from the message file.  
If not used, the date of position 14 must be filled in here too

BAAN: Mapping to the BAAN table field  
TFtdsls041.prdt

Position	<b>32</b>	Field format	<b>an..3</b>	Field status	<b>C</b>
Field name	<b>Container</b>				

Description: This field contains the Code for the Container used.

Processing outgoing

EDI Sub-System:

BAAN: The Container Code from BAAN table field TFtdpur041.cntr is mapped to this position.

Processing incoming

EDI Sub-System: Transmission of the value from the message file.

BAAN: Mapping to the BAAN table field  
TFtdsls041.cntr

Position	<b>33</b>	Field format	<b>n..6</b>	Field status	<b>C</b>
Field name	<b>Order Line Discount Percentage 1</b>				

Description: This field contains the first Percentage of the Order Line Discount.  
 Format: NNN.NN  
 Maximum is 100.00

Processing outgoing

EDI Sub-System:

BAAN: The percentage of the first discount from BAAN table field TFtdpur041.disc(1) is mapped to this position.

Processing incoming

EDI Sub-System: Transmission of the value from the message file.

BAAN: Mapping to the BAAN table field TFtdsls041.disc (1)

Position	<b>34</b>	Field format	<b>n..6</b>	Field status	<b>C</b>
Field name	<b>Order Line Discount Percentage 2</b>				

Description: This field contains the second Percentage of the Order Line Discount.  
 Format: NNN.NN  
 Maximum is 100.00

Processing outgoing

EDI Sub-System:

BAAN: The percentage of the first discount from BAAN table field TFtdpur041.disc(2) is mapped to this position.

Processing incoming

EDI Sub-System: Transmission of the value from the message file.

BAAN: Mapping to the BAAN table field TFtdsls041.disc (2)

Position	<b>35</b>	Field format	<b>n..6</b>	Field status	<b>C</b>
Field name	<b>Order Line Discount Percentage 3</b>				

Description: This field contains the first Percentage of the Order Line Discount.

Format: NNN.NN

Maximum is 100.00

Processing outgoing

EDI Sub-System:

BAAN: The percentage of the first discount from BAAN table field TFtdpur041.disc(3) is mapped to this position.

Processing incoming

EDI Sub-System: Transmission of the value from the message file.

BAAN: Mapping to the BAAN table field TFtdsls041.disc (3)

Position	<b>36</b>	Field format	<b>an7</b>	Field status	<b>M</b>
Field name	<b>Data record end sign</b>				

Description: This field indicates the end of the data record. It contains the constant value 'SA5\_END'.

Processing outgoing

EDI Sub-System:

BAAN: This field will be filled with the constant value 'SA5\_END'.

Processing incoming

EDI Sub-System: This field will be filled with the constant value 'SA5\_END'.

BAAN: None

## SA6 Delivery Address per Order Line

Status : Conditional  
 Frequency : Once per Order Position  
 Description: This data record is related to one Order Position.

<i>ORDER INHOUSE FORMAT</i>					<i>Mapping from Application Table Fields</i>		<i>Mapping to Application Fields</i>	
<i>Pos</i>	<i>FIELD DESCRIPTION</i>	<i>Key</i>	<i>ST</i>	<i>FM</i>	<i>Table Field</i>	<i>Action</i>	<i>Table Field</i>	<i>Action</i>
1.	Kind of data record	O/I	M	an3	SA6		SA6	
2.	Message reference	O/I	M	an..14	tcedi701.bano		tcedi702.bano	
3.	Supplier code (out) Network address customer (in)	O I	M M	an..6 an..17	tcedi028.neta		tds040.cuno	Conversion (see below)
4.	Order Number	O/I	M	n..6 an..30	tdpur040.orno		tds040.refa tds040.eono	für Baan IVc
5.	Order Position Number		M	n..5 an..16	tdpur041.pono		tds041.pono tds041.epos	für Baan IVc
6.	Address Qualifier Delivery Address		M	an1	“0”		tds042.ckor	EDI Sub-System: “0” and Code and Conversion
7.	Delivery Address Country		C	an..6	tdpur042.ccty tcms003.ctty	OSD PWA Code and Conversion	tds042.ccty	Code and Conversion
8.	Delivery Address first part of the name		C	an..35	tdpur042.nama tcms003.nama	OSD PWA	tds042.nama	

**Data record description by kind of data record**

<i>ORDER INHOUSE FORMAT</i>					<i>Mapping from Application Table Fields</i>		<i>Mapping to Application Fields</i>	
<i>Pos</i>	<i>FIELD DESCRIPTION</i>	<i>Key</i>	<i>ST</i>	<i>FM</i>	<i>Table Field</i>	<i>Action</i>	<i>Table Field</i>	<i>Action</i>
9.	Delivery Address second part of the name		C	an..30	tdpur042.namb tcms003.namb	OSD PWA	tdsls042.namb	
10.	Delivery Address		C	an..30	tdpur042.namc tcms003.namc	OSD PWA	tdsls042.namc	
11.	Delivery Address 2		C	an..30	tdpur042.namd tcms003.namd	OSD PWA	tdsls042.namd	
12.	Delivery Address City		C	an..30	tdpur042.name tcms003.name	OSD PWA	tdsls042.name	
13.	Delivery Address. further information for city e.g. province/country		C	an..30	tdpur042.namf tcms003.namf	OSD PWA	tdsls042.namf	
14.	Delivery Address Zip Code		C	an..10	tdpur042.pstc tcms003.petc	OSD PWA	tdsls042.pstc	
15.	Data record end sign		M	an7	SA6_END	OSD PWA	SA6_END	

Evaluation Expression: OSD (tdpur042.orno <> 0) and (tdpur042.ckor = 0)

Evaluation Expression: PWA strip(tdpur041.cwar) <> "" and (tdpur042.orno = 0)

<b>Detailed description:</b>		<b>Delivery Address per order line</b>			
<b>Kind of data record:</b>		<b>SA6 Delivery Address per order line</b>			
Position	<b>1</b>	Field format	<b>an3</b>	Field status	<b>M</b>
Field name	<b>Kind of data record</b>		(Key field out/in)		

Description: This field identifies the kind of data record in the message block. It contains the constant value 'SA6'.

Processing outgoing

EDI Sub-System:

BAAN: This field will be filled with the constant value 'SA6'.

Processing incoming

EDI Sub-System: This field will be filled with the constant value 'SA6'.

BAAN:

Position	<b>2</b>	Field format	<b>an..14</b>	Field status	<b>M</b>
Field name	<b>Message reference</b>		(Key field out/in)		

Description: This field identifies all connected data records of one order. The numbering of the message reference, which has to be clear by Order, helps to control the chronological order of the Orders and the complete transmission.

Processing outgoing

EDI Sub-System:

BAAN: Refer to data record SA5.

Processing incoming

EDI Sub-System: Refer to data record SA5

BAAN:

Position	<b>3 out</b>	Field format	<b>an..6</b>	Field status	<b>M</b>
Field name	<b>Supplier code</b>		(Key field out)		

Description: This field contains the identification code of the supplier on the customer side.

Processing outgoing

EDI Sub-System:

BAAN: Refer to data record SA5

Position	<b>3 in</b>	Field format	<b>an..17</b>	Field status	<b>M</b>
Field name	<b>Network address customer</b>		(Key field in)		

Description: This field contains the network address of the customer.

Processing incoming

EDI Sub-System: Refer to data record SA5

BAAN: Refer to data record SA5

Position	<b>4</b>	Field format	<b>out n..6 / in an..30</b>	Field status	<b>M</b>
Field name	<b>order Number</b>		(Key field in/out)		

Description: This field contains the order number.

Processing outgoing

EDI Sub-System: None.

BAAN: The purchase order number is mapped from BAAN table field TFtdpur040 to this position.

Processing incoming

EDI Sub-System: Transmission of the value from the message file.

BAAN: Mapping to BAAN table field TFtdsls040.refa  
 Baan IVc: Mapping to BAAN table field TFtdsls040.eono



Position	<b>5</b>	Field format	<b>n..5 / an..16</b>	Field status	<b>M</b>
Field name	<b>Order Line Number</b>				

Description: This field contains the Order Line Number.

Processing outgoing

EDI Sub-System:

BAAN: The order line number of the lines of the purchase order from BAAN table field TFtdpur041.pono is mapped to this position.

Processing incoming

EDI Sub-System: Transmission of the value from the message file.

BAAN: Mapping to BAAN table field TFtdsls041.pono

Baan IVc: Mapping to BAAN table field TFtdsls041.epos **Field Format: an..16**

Position	<b>6</b>	Field format	<b>an1</b>	Field status	<b>M</b>
Field name	<b>Address Qualifier Delivery Address</b>				

Description: This field contains the Qualifier which identifies the next data set as a delivery address.

0 The following data is the delivery address  
This qualifier must be entered in BAAN table TBtcedi224 regarding to the used organization.

Processing outgoing

EDI Sub-System:

BAAN: The value "0" is filled in.

Processing incoming

EDI Sub-System: The value "0" is filled in this position.

BAAN: Mapping to BAAN table field TFtdsls042.ckor and Conversion with Tbtcedi224..

Position	7	Field format	an..6	Field status	C
Field name	<b>Delivery Address Country</b>				

Description: This field contains the Country of the Address. The following country codes are defined in BAAN table Tbtcedi226 according to ODDC 6

AT: Austria  
 BE: Belgium  
 CH: Switzerland  
**DE: Federal Republik of Germany**  
 DK: Denmark  
 ES: Spain  
 FI: Finland  
 FR: France  
 GB: United Kingdom  
**GR: Greece**  
 IE: Ireland  
 IT: Italy  
 LU: Luxembourg  
 NL: Netherlands  
 NO: Norway  
 PT: Portugal  
 SE: Sweden  
 TR: Turkey  
 YU: Yugoslavia

Processing outgoing

EDI Sub-System:

BAAN: The country code of the delivery address from BAAN table field TFtdpur042.ccty is mapped to this position and converts with BAAN table TBtcedi440.

Processing incoming

EDI Sub-System:

Transmission of the value from the message file.

BAAN:

Mapping to the BAAN table field TFtdsls042.ccty and conversion with BAAN table TBtcedi302.

Position	<b>8</b>	Field format	<b>an..35</b>	Field status	<b>C</b>
Field name	<b>Delivery Address First part of Name</b>				

Description: This field contains the first part of the name.

Processing outgoing

EDI Sub-System:

BAAN: The First part of the Name from BAAN table field TFtdpur042.nama or tcmcs003.nama is mapped to this position.

Processing incoming

EDI Sub-System: Transmission of the value from the message file.

BAAN: Mapping to the BAAN table field TFtdsls042.nama

Position	<b>9</b>	Field format	<b>an..30</b>	Field status	<b>C</b>
Field name	<b>Delivery Address Second part of Name</b>				

Description: This field contains the second part of the name.

Processing outgoing

EDI Sub-System:

BAAN: The Second part of the Name from BAAN table field TFtdpur042.namb is mapped to this position.

Processing incoming

EDI Sub-System: Transmission of the value from the message file.

BAAN: Mapping to the BAAN table field TFtdsls042.namb

Position	<b>10</b>	Field format	<b>an..30</b>	Field status	<b>C</b>
Field name	<b>Delivery Address</b>				

Description: This field contains the first part of the Delivery Address.

Processing outgoing

EDI Sub-System:

BAAN: The first part of the Address from BAAN table field TFtdpur042.name is mapped to this position.

Processing incoming

EDI Sub-System: Transmission of the value from the message file.

BAAN: Mapping to the BAAN table field TFtdsls042.name

Position	<b>11</b>	Field format	<b>an..30</b>	Field status	<b>C</b>
Field name	<b>Delivery Address 2</b>				

Description: This field contains the second part of the delivery address.

Processing outgoing

EDI Sub-System:

BAAN: The second part of the Delivery Address from BAAN table field TFtdpur042.name is mapped to this position.

Processing incoming

EDI Sub-System: Transmission of the value from the message file.

BAAN: Mapping to the BAAN table field TFtdsls042.name

Position	<b>12</b>	Field format	<b>an..30</b>	Field status	<b>C</b>
Field name	<b>Delivery Address City</b>				

Description: This field contains the name of the City.

Processing outgoing

EDI Sub-System:

BAAN: The name of the City from BAAN table field TFtdpur042.name is mapped to this position.

Processing incoming

EDI Sub-System: Transmission of the value from the message file.

BAAN: Mapping to the BAAN table field TFtdsls042.name

Position	<b>13</b>	Field format	<b>an..30</b>	Field status	<b>C</b>
Field name	<b>Delivery Address for further information province or country</b>				

Description: This field contains further information to the City (province/country)

Processing outgoing

EDI Sub-System:

BAAN: The second part of the City information from BAAN table field TFtdpur042.namf is mapped to this position or.

Processing incoming

EDI Sub-System: Transmission of the value from the message file.

BAAN: Mapping to the BAAN table field TFtdsls042.namf

Position	<b>14</b>	Field format	<b>an..10</b>	Field status	<b>C</b>
Field name	<b>Delivery Address Zip Code</b>				

Description: This field contains the postal or zip Code referring to the Delivery Address.

Processing outgoing

EDI Sub-System:

BAAN: The Zip Code from BAAN table field TFtdpur042.pstc or tcmcs003.pstc is mapped to this position.

Processing incoming

EDI Sub-System: Transmission of the value from the message file.

BAAN: Mapping to the BAAN table field TFtdsls042.pstc

Position	<b>15</b>	Field format	<b>an7</b>	Field status	<b>M</b>
Field name	<b>Data record end sign</b>				

Description: This field indicates the end of the data record. It contains the constant value 'SA6\_END'.

Processing outgoing

EDI Sub-System:

BAAN: This field will be filled with the constant value 'SA6\_END'.

Processing incoming

EDI Sub-System: This field will be filled with the constant value 'SA6\_END'.

BAAN: None

# Appendix A Sample file

```
"SA1";"F8009807230001";"005122";"F800";"ORDERS";"BEMIS";"";100432;980
723;1418;" "
;"SA1_END"
"SA2";"F8009807230001";"005122";100432;100081;980701;980701;"";"001";
0;"280";1;1
"";"sch";"";"DP";"ZZ";"IP";"IZ";"";"";"";"";"";"SA2_END"
"SA4";"F8009807230001";"005122";100432;"1";"DE";"Baan Automotive &
Controlling A
G";"Werk III";"Karl-Wiechert-Allee 66";"5. Etage";"30451
Hannover";"";"30451";""
;"";"VAT";"SA4_END"
"SA5";"F8009807230001";"005122";100432;10;"MB1";"PALLET-
007025";"SA";"Testartike
l
MB1";25;"KGM";12;980701;"KGM";"15";"DE";0;0;0;0;"";0;"";0;"";0;"";"";"VAT
";980701;
;"";0;0;0;"SA5_END"
"SA6";"F8009807230001";"005122";100432;10;"0";"DE";"Rohstoffe";"";"Kl
oth - Senki
ng GmbH."; "Cheruskerring 38";"31137 Hildesheim";"";"31137";"SA6_END"
"SA5";"F8009807230001";"005122";100432;20;"MB2";"PALLET-
007026";"SA";"Testartike
l
MB1";25;"KGM";1212;980701;"KGM";"15";"DE";0;0;0;0;"";0;"";0;"";0;"";"";"V
AT";98070
1;"";0;0;0;"SA5_END"
"SA6";"F8009807230001";"005122";100432;20;"0";"DE";"Rohstoffe";"";"Kl
oth - Senki
ng GmbH."; "Cheruskerring 38";"31137 Hildesheim";"";"31137";"SA6_END"
```

