

BAAN IVc4

**Message Type Shipment Notification Definition
of BEMIS 2.1 Inhouse Format**

**Message with MBOL Header
(Includes adaption for AMES-T)**

A publication of:

Baan Development B.V.
P.O.Box 143
3770 AC Barneveld
The Netherlands

Printed in the Netherlands

© Baan Development B.V. 2002.
All rights reserved.

The information in this document is subject to change without notice. No part of this document may be reproduced, stored or transmitted in any form or by any means, electronic or mechanical, for any purpose, without the express written permission of Baan Development B.V.

Baan Development B.V. assumes no liability for any damages incurred, directly or indirectly, from any errors, omissions or discrepancies between the software and the information contained in this document.

Document Information

Code: U7212E US
Group: User Documentation
Edition: E
Date: February, 2002

Table of contents

1 Documentation of the record types	1-1
Message and DLLs	1-1
Available record types of the message type shipment notification	1-1
Structure of the shipment notification message (in-house format)	1-2
Branching diagram	1-2
Shipment notification - key fields	1-3
Network directories	1-4
Adaptation for Business Process AMES-T	1-5
<i>EDI Test Message</i>	1-5
<i>Special Network for Communication with the Customer Software System</i>	1-6
<i>Network directories</i>	1-6
BEMIS Messages – Conventions	1-7
Changing the Date Format	1-9
Version 1.3.a compared with Version 1.2.a	1-10
Version 2.0 compared with Version 1.3.a	1-11
Version 2.1 compared with Version 2.0	1-11
Additional Information in refer to the BEMIS Position SA3.32	1-12
2 Shipment Notification – Record description	2-1
SA1 Message Overhead	2-1
<i>Detailed description</i>	2-3
SA2 Loading Header	2-9
<i>Detailed description</i>	2-12
SA3 Shipping Note Header	2-22
<i>Detailed description</i>	2-25
SA4 Shipping Note Position	2-41
<i>Detailed description</i>	2-45
SA5 Packaging Position	2-60
<i>Detailed description</i>	2-63
3 Sample file incoming/outgoing message	3-1
4 Glossary of terms and abbreviations	4-1

Message Type Shipment Notification Definition of BEMIS 2.1 Inhouse Format	ii
--	-----------

About this document

This documentation details the standard in-house data formats, which the BAAN Electronic Message Interchange System BEMIS requires as interfaces to the appropriate EDI subsystem.

The documentation is intended for developers of EDI subsystems, which want to realize an interface with BAAN IV. Furthermore, this documentation helps consultants, who want to implement an interface on this basis, to check the correct data contents of the transfer files. Important fields are identified with both the English and German terms, to assist German-language speakers using this documentation.

In case implementing the special business process AMES-T the EDI subsystems supplier is responsible for the transmission of the outgoing *message shipment notification (AMES)* to a customer softwaresystem. Therefore the outgoing message Shipment Notification (AMES) has to be linked to a special network named “*AMESN*” for instance.

This documentation describes the EDI message *incoming* and *outgoing shipment notifications*. The *shipment notification (AMES)* has the identical structure for outgoing messages.

Chapter 1 describes the structure of the interface file, the different record types within the file and the used key fields.

Chapter 2 details every single record type of the message. This chapter contains an overview table with the corresponding BAAN table fields. In addition, every single field is more detailed.

1 Documentation of the record types

The following section of the documentation details the BAAN ELECTRONIC message in-house format “Shipment Notification”.

Message and DLLs

The corresponding message linked to organization BEM is called **LFAVIS**.

The belonging DLLs are:

- tdpscdll4283 (incoming)
- tdsscdll4913 (outgoing)

Available record types of the message type shipment notification

The use of the following record types is conditional (C) respectively mandatory (M), when you transfer information of a shipment notification by means of the messages VDA 4913 („*Datenfernübertragung von Lieferschein- und Transportdaten (direkter Austausch zwischen Kunde und Lieferant)*“)¹ or ODETTE AVIEXP.

The shipment notification message (in-house format) consists of the following records:

ID	Status	Name
SA1	M	Message Overhead
SA2	M	Loading Header
SA3	M	Shipping Note Header
SA4	M	Shipping Note Position
SA5	C	Packaging Position

1

Remote transfer of shipping note and transportation data (direct transfer between customer and supplier)

Structure of the shipment notification message (in-house format)

The following record structure is used for the message type BEMIS shipment notification:

Level	Record ID	Status	Name
1	SA1	M/1	Message Overhead
2	SA2	M/1	Loading Header
3	SA3	M/R	Shipping Note Header
4	SA4	M/R	Shipping Note Position
5	SA5	C/R	Shipping Note Packaging Position

Branching diagram

The branching diagram shows the structure of the message. It indicates the hierarchical relationship between segments. A segment is a set of functionally-related BAAN tables.

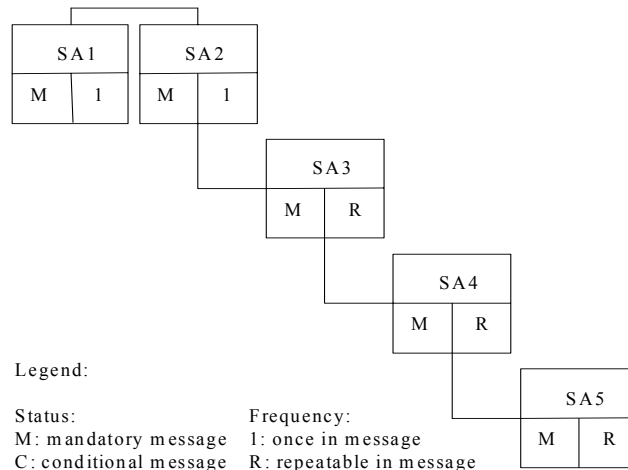


Figure 1, Branching diagram

For example, for one message, which consists of one shipment with two shipping notes with several shipping note positions and packaging positions, the BEMIS file has the following structure:

SA1 ...	Message Overhead
SA2 ...	Loading Header
SA3 ...	Shipping Note Header 1
SA4 ...	Shipping Note Position 11
SA5 ...	Packaging Position 111
SA5 ...	Packaging Position 112
SA4 ...	Shipping Note Position 12
SA5 ...	Packaging Position 121
SA3 ...	Shipping Note Header 2
SA4 ...	Shipping Note Position 21
SA5 ...	Packaging Position 211
SA5 ...	Packaging Position 212
SA1	Message Overhead New Message

Shipment notification - key fields

The following structure of the key fields is used to determine the corresponding records of a shipment notification:

Record type	Key field 1	Key field 2	Key field 3	Key field 4	Key field 5	Key field 6
SA1	Message Reference	Network address customer/supplier				
SA2	Message Reference	Network address customer/supplier	Master Bill of Lading No.			
SA3	Message Reference	Network address customer/supplier	Master Bill of Lading No.	Shipping Note No.		
SA4	Message Reference	Network address customer/supplier	Master Bill of Lading No.	Shipping Note No.	Shipping Note Position	
SA5	Message Reference	Network address customer/supplier	Master Bill of Lading No.	Shipping Note No.	Shipping Note Position	Packaging Position

Network directories

The so-called network directories form the basis of the communication between the EDI subsystem and BAAN IV. These directories are established in BAAN. The network basis directories for each network are defined in the BAAN session tcedi0120m000. For the network BEMIS, the basis directories can be indicated in the following way:

`${BSE}/edi/bemis/lieferavi`

BAAN will additionally create the following subdirectories:

`${BSE}/edi/bemis/lieferavi/appl_from/`

`${BSE}/edi/bemis/lieferavi/appl_to/`

`${BSE}/edi/bemis/lieferavi/command/`

`${BSE}/edi/bemis/lieferavi/store_recv/`

`${BSE}/edi/bemis/lieferavi/store_sent/`

`${BSE}/edi/bemis/lieferavi/trace/`

The above mentioned directories have the following function:

- 1 `.../appl_from/`: In this directory, BAAN IV records the outgoing messages which are the defined BEMIS in-house format files. The EDI subsystem can collect them from here.
- 2 `.../appl_to/`: The EDI subsystem writes the incoming message into this directory in the BAAN IV in-house format.
- 3 `.../command/`: Directory of the semaphores.
- 4 `.../store_recv/`: BAAN IV stores in this directory processed incoming messages, if the configuration is accordingly. During this process an additional subdirectory by incoming message file is created which is named with a date and time stamp indicating when the message was moved.
- 5 `.../store_sent/`: BAAN IV stores in this directory processed outgoing messages if the configuration is accordingly. During this process an additional subdirectory by outgoing message file is created which is named with a date and time stamp indicating when the message was moved.
- 6 `.../trace/`: BAAN creates under this directory a log of the incoming and outgoing messages in the processing order, if the configuration is accordingly.

For every message type one network directory is used for outgoing and one for incoming messages. This means that one message file contains data for several partners.

The file name of the BEMIS in-house format file of the shipment notification, which is being described in this documentation, is defined in the following way:

Direction	File name	Network directory
Outgoing	LFAVIS.OUT	../appl_from
Incoming	LFAVIS.IN	../appl_to

Adaptation for Business Process AMES-T

EDI Test Message

In case of implementing the AMES-T business process the EDI subsystem suppliers has to distinguish between two types of outgoing messages in the system BAAN IV:

- 1 the normal transfer of an EDI message VDA 4913 to the customer
- 2 the special transfer of a shipment notification message to the customer software system (PDF-Generator)

We will define a new outgoing message which has the same structure as the message of the type shipment notification (outgoing):

The new type will be named *Shipment Notification (AMES)*, it is a special case of the shipment notification (outgoing).

The name of the BEMIS in-house format file of the named *Shipment Notification (AMES)* is **LFAVIT.OUT**.

Consequently the only difference between the definitions of the messages shipment notification (outgoing) and shipment notification (AMES) consists in the content of the field “Message”: The *field SAI.5* contains “LFAVIT” instead of “LFAVIS” before.

Special Network for Communication with the Customer Software System

When implementing the AMES-T business process, the message Shipment Notification (AMES), needs to be linked to a special network referred to as „AMESN“, in this document.

The network base directories for this special network „AMESN“ is defined in the Baan session tcedi0120m000. For this network the base directories can be indicated in the following way:

```
#{BSE}/edi /bemis/lfavit/...
```

BAAN IV will additionally create the subdirectories in the same way as the definition of BEMIS 1.3.a for the message type Shipment Notification. The file for the new BEMIS message of type Shipment Notification (AMES) LFAVIT.OUT contains data for the PDF-Generator only.

Such as in the directory `#{BSE}/edi /bemis/lfavit/app_from` BAAN IV records the outgoing messages which are the defined BEMIS format file LFAVIT.OUT. The EDI subsystem can collect the messages from here.

Network directories

For the special network AMESN, the basis directories can be indicated in the following way:

```
#{BSE}/edi /bemis/lfavit/
```

BAAN will additionally create the following subdirectories:

```
#{BSE}/edi /bemis/lfavit/appl_from/  
#{BSE}/edi /bemis/lfavit/appl_to/  
#{BSE}/edi /bemis/lfavit/command/  
#{BSE}/edi /bemis/lfavit/store_rcv/  
#{BSE}/edi /bemis/lfavit/store_sent/  
#{BSE}/edi /bemis/lfavif/trace/
```

The mentioned directories have the same function as directories of the original message Shipment Notification.

BEMIS Messages – Conventions

The following general rules apply to a message record in a BEMIS message file:

- 1 The length of a record can vary.
- 2 The message record must consist of all fields, even if not every field contains a value.
- 3 The fields in the file are to be separated by a ; .
- 4 The text values of the fields have to be put into “”.
- 5 The numerical values must not be put into “”.
- 6 Every message record starts with “SAX”.
- 7 Every message record ends with “SAX_END”.

In the following sections you will find the format descriptions for the individual record types of the BEMIS in-house format file. The tables contain the following data:

SHIPMENT NOTIFICATION INHOUSE FORMAT				
Pos	FIELD DESCRIPTION	Key	ST	FM

The first block of the table describes the format of a record type:

Pos.	Position of the field in the record
Field name	Description of the field
Key	Key field outgoing (O) / incoming (I)
ST	Field status mandatory (M) / conditional (C)
FM	Field format
	an..14 alphanumeric field with a maximum of 14 characters
	an14 alphanumeric field with exactly 14 characters
	n..10 numerical field with a maximum of 10 digits
	n1 numerical field with exactly 1 character

When BAAN generates outgoing messages, the numerical fields are written into the in-house format file without leading zeros. For example, for the year “0000” a “0” is written into the BEMIS message file.

Mapping from Application Table Fields (Outgoing)	
Table Field	Action

The second block of the table describes the corresponding table field for outgoing messages in BAAN IV as well as the possible special actions, which are taken during the processing of the messages.

Mapping to Application Table Fields (Incoming)	
Table Field	Action

The third block of the table describes the corresponding table field for incoming messages in BAAN IV as well as the possible special actions, which are taken during the processing of the messages.

In the past, there seemed to be some doubts about the way BAAN points out a position within the message file. Here are some additional explanations:

As defined in BEMIS a position within a message file is pointed out using two semicolons.

To draw an example: `"SAX";...;Position;...;"SAX_END"`

If an position in a BEMIS Message File is not taken by a value (this means the position is empty), the position is pointed out as shown above. Moreover the BAAN EDI Module distinguishes between numerical and alphanumerical data format. If a position defined as numerical is empty the position is pointed out using semicolons. On the other hand empty alphanumerical positions are exported in two way. The first way is to point out a position using the semicolons. The second way BAAN exports empty alphanumerical positions is to write two inverted commas within the position. This depends whether the alphanumerical field exists in BAAN's database or not. Finally we take a look at the following example:

empty numerical Position:

`"SAX";...;;...;"SAX_END"`

empty alphanumerical Position:

`"SAX";...;;...;"SAX_END"`

OR

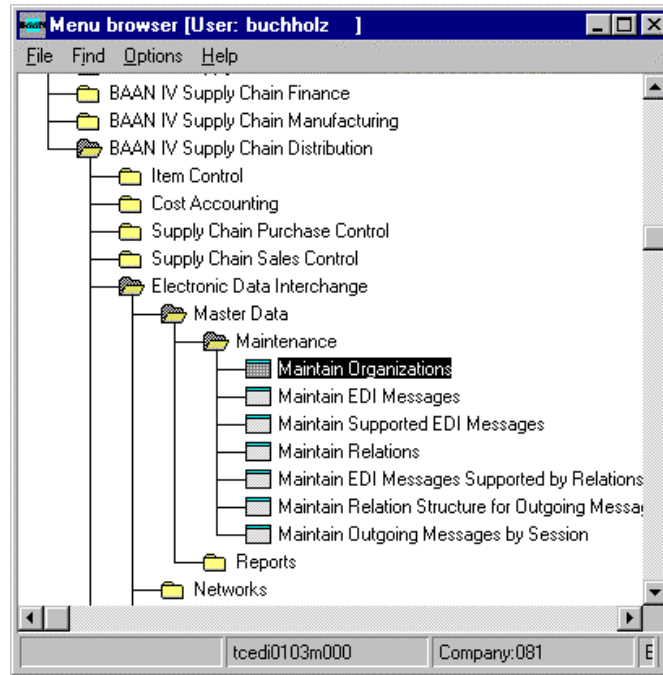
`"SAX";...;"";...;"SAX_END"`

Changing the Date Format

For the BAAN Versions b and c2/3 we have defined a date format using up to 6 numerical digits. Reading this definition, you will find out that the date format has been changed to 8 digits at maximum. With the BAAN Version BAAN IVc4 the delivered BEMIS default file the defaults.edi will be different in this point (in comparison to the versions delivered before). In BAAN EDI there is one global Parameter in order to send out date information including the two digits for the century.

The enclosed screen shots will show you where you will find the responsible parameter.

You have to choose the following menu option:



After you called the session tcedi0103m000 you will see that the entry for the dateformat on form two has been changed to "With Century (YYYYMMDD).

Organization	Test Indicator	Date Format
BEM BAAN Electr. Message Int. :		Without Century (YYMMDD)
LCM Inter Company Messages	1	Without Century (YYMMDD)

PLEASE NOTICE: If you use this option above the date format of every exported message will be changed to 8 digits! This means that the partner system (the translator software) has to be able to translate each outgoing message coming with the changed date format!

Following the table overview, every BAAN field is described in a more detailed way, including information about the processing in the EDI subsystem and in BAAN IV.

Version 1.3.a compared with Version 1.2.a

If you want to use this new version of the BEMIS Shipment Notification please install the solution of **DEFECT 79188-3**.

The following changes have been made:

SA2:

SA2.20: New Position: tcmcs080.dsca (an..30) Description of the Forwarding Agent

SA2.21: The End of record sign "SA2_END" is moved from position 20 to position 21

SA3:

SA3.13: Instead of tdssc017.ddat now: tdsls045 ddat

SA4:

SA5:

SA5.23. New position: Package Level (n..8) tdssc019.plvl

SA5.24: The End of record sign "SA5_END" is moved from position 23 to position 24

Message Type Shipment Notification Definition of BEMIS 2.1 Inhouse Format

Version 2.0 compared with Version 1.3.a

The new version 2.0 , based on version 1.3.a, is necessary to run the new BAAN IV Automotive Global Solution (AGS0).

New evaluation expression 'CMB' = 'tdssc045.ckor = tdssc.anst.cancelled'

Changes SA2 – Loading Header

Field number	Outgoing	Incoming
4 – new	tdssc045.rmbl steered by evaluation expression 'CMB'	NA

Changes SA5 – Shipping Note Packaging Position

Field number	Outgoing	Incoming
24 – new	tdssc019.ican	NA
25 – new	"SA5_END" old position was 24	NA

Version 2.1 compared with Version 2.0

The new version 2.1 is based on version 2.0 and can only be used up from BaanIV_c4_ags0 SP10.

'Hazardous Material Information' is available now in the outgoing message.

Changes SA4 – Shipping Note Position

Field number	Outgoing	Incoming
27 – new	tiitm950.sorg	NA
28 – new	tiitm950.hacl	NA
29 – new	tiitm950.maco	NA
30 – new	tiitm950.shna	NA
31 – new	tiitm950.pgrp	NA
32 – new	"SA4_END" old position was 27	NA

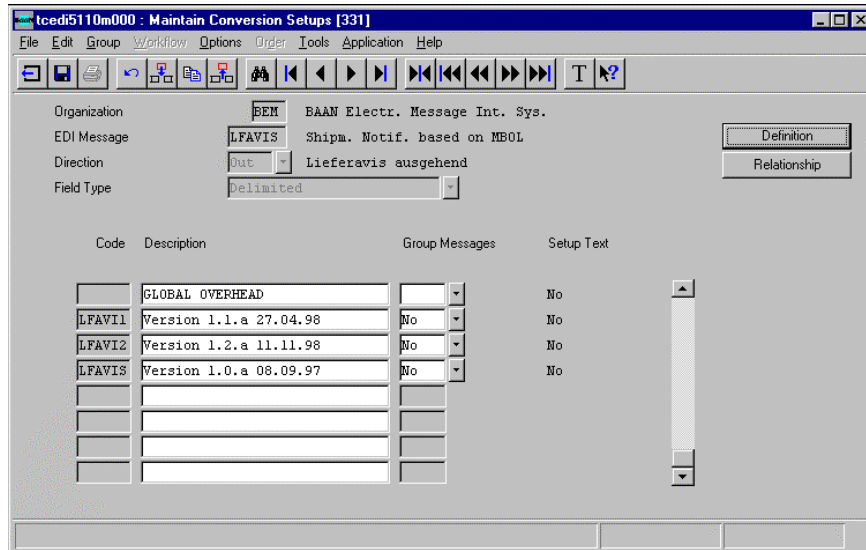
Additional Information in refer to the BEMIS Position SA3.32

Defining a new BEMIS Message version our aim is to add new information to the standard. In some cases these additional information are very specific. For example Fords demands an additional information in refer to the normally transmitted plant code. Therefore we decided to put this as a new position to our BEMIS standard message. But in this cases a little problem occurred. The additional plant information which is mapped to position SA3.32 is derived from the BAAN table field tdsse017.cdel using a the Code and Conversion table TBtcedi448 (Maintain Conv. of Delivery Address Codes by Customer (out)).

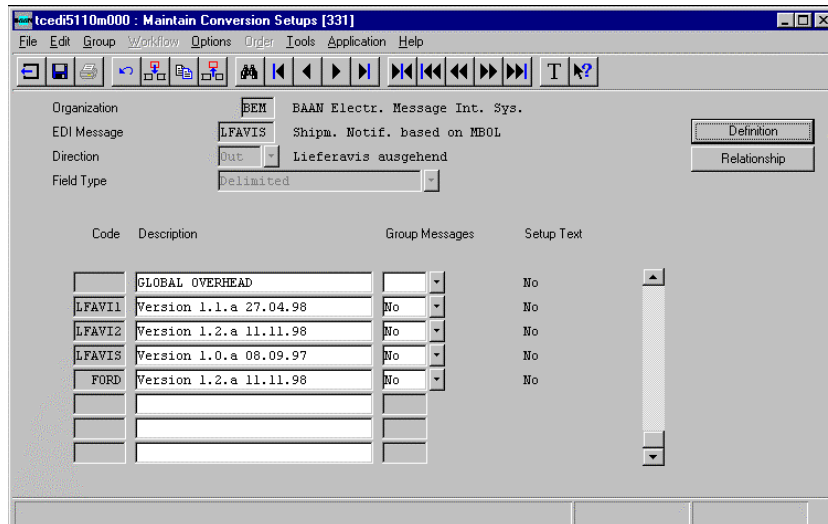
If an EDI Partner does not demand this information in an outgoing Shipment Notification you have to maintain a Code and Conversion table which is not needed.

Thus the following workflow should serve as a proposal to solve this problem:

If we look at the following Conversion Setup:



- 1 Copy the Conversion Setup LFAVIS2 (here Version 1.2.a 11.11.98) using an other name, e.g.:



2 Change the Conversion Setup Up Definition in the following position:

Status before the change in the Conversion Setup Definition “LFAVIS2 (here Version 1.2.a 11.11.98)”:

Organization : BEH BAAN Electr. Message Int. Sys. Direction : Out
EDI Message : LFAVIS Shipm. Notif. based on HBOL Field Type : Delimited
Destination : Conversion Setup : LFAVIS2 Version 1.2.a 11.11.98

<u>Field</u>	<u>Seq No.</u>	<u>Seq. Level</u>	<u>Start Index Pos.</u>	<u>Length</u>	<u>Next Rec.</u>	<u>Sequence Iter Key</u>	<u>Write Record</u>	<u>Mult. Fact Table</u>	<u>Conversion</u>	<u>Action when not found</u>	<u>Evaluation Expression</u>
tdssc017.puqt	0	187	3	29	0	0	0	0	i		
tdssc017.wght	0	189	3	30	0	0	0	0	i		
""	0	190	3	31	0	0	0	0	i		
tdssc017.cdcl	0	194	3	32	0	0	0	0	i Delivery Addr Original Valu		

Status after the change in Conversion Setup Definition “FORD (here Version 1.2.a 11.11.98)”:

Organization : BEH BAAN Electr. Message Int. Sys. Direction : Out
EDI Message : LFAVIS Shipm. Notif. based on HBOL Field Type : Delimited
Destination : Line Conversion Setup : FORD Version 1.2.a 11.11.98

<u>Field</u>	<u>Seq No.</u>	<u>Seq. Level</u>	<u>Start Index Pos.</u>	<u>Length</u>	<u>Next Rec.</u>	<u>Sequence Iter Key</u>	<u>Write Record</u>	<u>Mult. Fact Table</u>	<u>Conversion</u>	<u>Action when not found</u>	<u>Evaluation Expression</u>
tdssc017.puqt	0	187	3	29	0	0	0	0	i		
tdssc017.wght	0	189	3	30	0	0	0	0	i		
""	0	190	3	31	0	0	0	0	i		
tdssc017.cdcl	0	194	3	32	0	0	0	0	i Delivery Addr Discard Hessa		

3 In the last step you have to link the new created and modified Conversion Setup Entry “FORD (here Version 1.2.a 11.11.98)” to your Business Partner using the BAAN session tcedi0111m000 Maintain EDI Messages Supported by Relations.

2 Shipment Notification – Record description

This chapter describes the record types which are used in the BAAN standard in-house message format for shipment notifications according to VDA 4913 or ODETTE AVIEXP.

SA1 Message Overhead

Status:	Mandatory
Frequency:	Once by message
Description:	This record supports the clear identification of the whole message.

SHIPMENT NOTIFICATIONS INHOUSE FORMAT					Mapping from Application Table Fields (out)		Mapping to Application Fields (in)	
Pos	FIELD DESCRIPTION	Key	ST	FM	Table Field	Action	Table Field	Action
1	Record type	O/I	M	an3	SA1		SA1	
2	Message reference	O/I	M	an..14	tcedi701.bano	Generation (see below)	tcedi702.bano	Generation by EDI subsystem
3	Network address customer / supplier	O/I	M	an..17	tcedi028.neta	Conversion (see below)	tcedi702.reno	Conversion (see below)
4	Our Identification in the network		M	an..17	tcedi020.neta	Conversion (see below)	empty	
5	Message		M	an..6	tcedi001.code	Conversion (see below)	tcedi702.mess	Conversion (see below)
6	Organization		M	an..6	tcedi003.code	Conversion (see below)	tcedi702.orga	Conversion (see below)
7	Order type		M	an..35	tcedi011.koor	Conversion (see below)	tcedi702.koor	Conversion (see below)
8	Order reference		M	an..35	empty	not filled at the moment (...;...)	tcedi702.msno	Conversion (see below)
9	Shipping date		M	n..8	current date		tcedi702.send	
10	Shipping time		M	n..4	current time		tcedi702.sent	
11	Transfer code old		M	an..14	empty	not filled at the moment (...;...)	tcedi702.prno	
12	End of record sign		M	an7	SA1_END		SA1_END	

Detailed description

Position	1	Field format	an3	Field status	M
Field name	Record type			(key field out/in)	

Description: This field identifies the record type in the message block. It contains the fixed value 'SA1'.

Processing outgoing

EDI subsystem:

BAAN: This field is filled with the fixed value 'SA1'.

Processing incoming

EDI subsystem: This field is filled with the fixed value 'SA1'.

BAAN: None

Position	2	Field format	an..14	Field status	M
Field name	Message reference			(key field out/in)	

Description: This field identifies all connected records of one shipment notification. The message reference has to be clear by shipment notification. The numbering helps to control the chronological order of the shipment notifications and the complete transfer. The field consists of a fix part with four characters, the current date in the format YYMMDD and a serial number with four characters.

The special format is defined in the network parameters in the BAAN table tcedi020. When generating the message reference with the EDI subsystem, the created message reference needs to be specific, that means unique. While storing the message reference BAAN controls whether it is specific.

Processing outgoing

EDI subsystem:

BAAN: BAAN generates this number to identify a shipment notification, stores it in the BAAN table field tcedi701.bano and writes it into all records of a shipment notification.

Processing incoming

EDI subsystem: The EDI subsystem generates this number to identify a shipment notification and writes it into all records of a shipment notification.

BAAN: Mapping of the BAAN field Tcedi702.bano to BAAN.

Position	3	Field format	an..17	Field status	M
Field name	Network address customer / supplier (key field out/in)				

Description: This field contains on the outgoing side the network address of the supplier and on the incoming side the network address of the customer.

Processing outgoing

EDI subsystem:

BAAN: The network address is stored in the BAAN table tcedi028 'Relations by network' under the corresponding business partner (supplier) and the corresponding network in the BAAN field Tcedi028.neta. The contents of this field is mapped to the position of the transfer file.

Processing incoming

EDI subsystem:

BAAN: The network address determines the corresponding business partner (customer) and the network in the BAAN table tcedi028 'Relations by network'. This identification is mapped to the BAAN field Tcedi702.reno.

Position	4	Field format	an..17	Field status	M
Field name	Our identification in the network				

Description: This field contains on the outgoing side our identification (customer) in the network.

Processing outgoing

EDI subsystem:

BAAN: The identification of the customer in the used network is entered in the BAAN table tcedi020 'Networks'. The BAAN field Tcedi028.neta is mapped to this position.

Processing incoming

EDI subsystem: Transfer of the value from the message file.

BAAN: On the incoming side this field is ignored.

Position	5	Field format	an..6	Field status	M
Field name	Message				

Description: This field contains the code for the identification of the concerned message. The code of the message type shipment notification is 'LFAVIS', in the case of AMES-T it is 'LFAVIT'.

Processing outgoing

EDI subsystem:

BAAN: The internal message code tcedi001.code 'LFAVIS' of the BAAN table tcedi001 'Supported EDI Messages' is mapped to this position.

Processing incoming

EDI subsystem: This field is filled with the fixed value 'LFAVIS'.

BAAN: The message code in the BAAN table tcedi001 'Supported EDI Messages' determines, which internal message is connected to this BEMIS shipment notification. In the BAAN table tcedi005 'EDI Messages' is determined for every message, which session (DLL) is used in BAAN to process the BEMIS shipment notification. The message code is mapped to the BAAN field Tcedi702.mess.

Position	6	Field format	an..6	Field status	M
Field name	Organization				

Description: This field contains the organization (Standard/Norm), which is used for the EDI communication.

Processing outgoing

EDI subsystem:

BAAN: The internal organization code tcedi003.code 'BEMIS' from the BAAN table tcedi003 'Organizations' is mapped to this position.

Processing incoming

EDI subsystem: This field is filled with the fixed value 'BEMIS'.

BAAN: Mapping to BAAN field Tcedi702.orga.

The corresponding organization must have been entered into the BAAN table tcedi003.

Position	7	Field format	an..35	Field status	M
Field name	Order type				

Description: This field contains a code for the concerned order type.

Processing outgoing

EDI subsystem:

BAAN: In BAAN table tcedi011 there must be an entry for this order type in connection with the appropriate message and organization. The BAAN field Tcedi011.koor is mapped to this position. It contains the code 4913 (...;“4913“;...).

Processing incoming

EDI subsystem: The value 4913 is entered in this field (...;“4913“;...).

BAAN: Mapping to BAAN field Tcedi702.koor.

In BAAN table tcedi200 there must be an entry for this order type in connection with the appropriate message and organization.

Position	8	Field format	an..35	Field status	M
Field name	Order reference				

Description: This field contains a code for the order reference.

Processing outgoing

EDI subsystem:

BAAN: The position will not be filled; here (...;“““;...).

Processing incoming

EDI subsystem: Transfer of the value from the transfer file.

BAAN: Mapping to BAAN field Tcedi702.msno

Position	9	Field format	n..8	Field status	M
Field name	Shipping date				

Description: This field contains on the outgoing side the current date, on which the message was created. On the incoming side, this field contains the arrival date of the message at the EDI subsystem. The date is displayed in the following format: YYYYMMDD.

Processing outgoing

EDI subsystem:

BAAN: Mapping of the current date to the position.

Processing incoming

EDI subsystem: Entry of the arrival date of the message at the EDI subsystem.

BAAN: Mapping to BAAN field Tcedi702.send.

Position	10	Field format	n..4	Field status	M
Field name	Shipping time				

Description: This field contains on the outgoing side the time, when the message was created. On the incoming side, the field contains the arrival time of the message at the EDI subsystem. The time is displayed in the following format: HHMM.

Processing outgoing

EDI subsystem:

BAAN: Mapping of the current time to the position.

Processing incoming

EDI subsystem: Entry of the arrival time of the message at the EDI subsystem.

BAAN: Mapping to BAAN field Tcedi702.send

Position	11	Field format	an..14	Field status	M
Field name	Transfer code old				

Description: This field contains the reference number of the previous transfer.

Processing outgoing

EDI subsystem:

BAAN: The position will not be filled; here (.,‘‘‘;..).

Processing incoming

EDI subsystem: Transfer of the value from the transfer file.

BAAN: Mapping to BAAN field Tcedi702.prho

Position	12	Field format	an7	Field status	M
Field name	End of record sign				

Description: This field indicates the end of the record. It contains the fixed value ‘SA1_END’.

Processing outgoing

EDI subsystem:

BAAN: The field is filled with the fixed value ‘SA1_END’.

Processing incoming

EDI subsystem: The field is filled with the fixed value ‘SA1_END’.

BAAN: None

SA2 Loading Header

Status:	Mandatory
Frequency:	Once by message
Description:	This record type is used to transfer data concerning transportation. It contains information about the shipment identification as well as information about the transport. For a shipment notification this record type is available only once. All the records, which follow up to the next record of the type SA2, refer to the same shipment notification.

SHIPMENT NOTIFICATION INHOUSE FORMAT					Mapping from Application Table Fields (out)		Mapping to Application Fields (in)	
Pos	FIELD DESCRIPTION	Key	ST	FM	Table Field	Action	Table Field	Action
1	Record type	O/I	M	an3	SA2		SA2	
2	Message reference	O/I	M	an..14	tcedi701.bano	Generation (see below)	tcedi702.bano	Generation by EDI subsystem
3	Network address customer / supplier	O/I	M	an..17	tcedi028.neta	Conversion (see below)	tcedi702.reno	Conversion (see below)
4	MBOL-Number Number, which the consignor assigns to the shipment/load.	O/I	M	n..9 an..30	tdssc045.mbol tdssc045.rmb in case of cancellation		tdpsc040.load	
5	Freight forwarder Name or number of the business partner, who carries out the transport.		M	an..14	tdssc045.cfw	Conversion (see below)	tdpsc040.pron	
6	Freight forwarder – transfer date Date of shipment transfer to freight forwarder.		M	n..8	tdssc045.cdat		tdpsc040.idat	
7	Freight forwarder – transfer time		M	n..4	tdssc045.ctim		tdpsc040.itim	
8	Gross shipment weight		M	n..15	tdssc045.wght		tdpsc040.txta	
9	Net shipment weight		C	n..15	tdssc045.ntwt	Format: NNNNNNNNNN NN.NNN	tdpsc040.txta	
10	Postage code		C	an2	tdssc045.term		tdpsc040.txta	

SHIPMENT NOTIFICATION INHOUSE FORMAT					Mapping from Application Table Fields (out)		Mapping to Application Fields (in)	
Pos	FIELD DESCRIPTION	Key	ST	FM	Table Field	Action	Table Field	Action
11	Number of packages Total of all packages of one shipment.		C	n..4	tdssc045.puqt	Format: NNNN 1 load unit equals 1 package	tdpsc040.iedi(1)	
12	Transport unit code		M	an2	tdssc045.ecod		tdpsc040.iedi(2)	
13	Transport unit number Enter pol. identification if transport unit code = 1		M	an..10	tdssc045.vhid		tdpsc040.vhid	
14.	EDI-Code (supplier/ELP) Fixed value		C	an..1		not filled at the moment (..;"";..)		
15.	Shipment identification Fixed value		C	an..1		not filled at the moment (..;"";..)		
16.	Supplier's Plant Code		C	an..17		not filled at the moment (..;"";..)		
17.	Load volume		C	n..15	tdssc045.vol	Format: NNNNNNNNNN NN.NNN		
18.	Unit Load Volume		C	an..3		not filled at the moment (..;"";..)		
19.	Number of the Transport Partner		C	an..17	tdssc045.tpno			
20.	Name of the Forwarding Agent		C	an..30	tcms080.dsca			
21.	End of record sign		M	an7	SA2_END		SA2_END	

Detailed description

Position	1	Field format	an3	Field status	M
Field name	Record type			(key field out/in)	

Description: The field identifies the record type in the message block.
It contains the fixed value 'SA2'.

Processing outgoing

EDI subsystem: None

BAAN: The position is filled with the fixed value 'SA2'.

Processing incoming

EDI subsystem: The position is filled with the fixed value 'SA2'.

BAAN: None

Position	2	Field format	an..14	Field status	M
Field name	Message reference			(key field out/in)	

Description: This field identifies all connected records of one shipment notification. The message reference has to be clear by shipment notification. The numbering helps to control the chronological order of the shipment notifications and the complete transfer. The field consists of a fix part with four characters, the current date in the format YYMMDD and a serial number with four characters.

The special format is defined in the network parameters in BAAN table tcedi020. When generating the message reference with the EDI subsystem, the created message reference needs to be specific, that means unique. While storing the message reference BAAN controls whether it is specific.

Processing outgoing

EDI subsystem:

BAAN: The BAAN system generates this number to identify a shipment notification, stores it in the BAAN table field tcedi701.bano and writes it into all records of a shipment notification.

Processing incoming

EDI subsystem: The EDI subsystem generates this number to identify a shipment notification and writes it into all records of a shipment notification.

BAAN: Mapping to BAAN field Tcedi702.bano.

Position	3	Field format	an..17	Field status	M
Field name	Network address customer / supplier (key field out/in)				

Description: This field contains on the outgoing side the network address of the supplier and on the incoming side the network address of the customer.

Processing outgoing

EDI subsystem:

BAAN: The network address is stored in the BAAN table tcedi028 'Relations by network' under the corresponding business partner (supplier) and the corresponding network in the BAAN field Tcedi028.neta. The contents of this field is mapped to the position of the transfer file.

Processing incoming

EDI subsystem:

BAAN: The network address determines the corresponding business partner (customer) and the network in the BAAN table tcedi028 'Relations by network'. This identification is mapped in the BAAN field Tcedi702.reno.

Position	4	Field format	n..9	Field status	M
Field name	MBOL-Number				

Description: The Master Bill of Lading-Number (*Sendungs-Ladungs-Bezugs-Nummer*) is the number which the consignor assigns to the shipment/load.

Processing outgoing

EDI subsystem: None

BAAN: Mapping of BAAN field Tdssc045.mbol to position.

Mapping of BAAN field Tdssc045.rmb1 to position in case of cancellation.

Processing incoming

EDI subsystem: None

BAAN: Mapping of field value to BAAN field Tdpsc040.load

Position	5	Field format	an..14	Field status	M
Field name	Freight forwarder				

Description: Name or number of the business partner who carries out the transportation.

The field contains an alphanumeric code with a maximum of 14 characters.

Processing outgoing

EDI-subsystem: None

BAAN: Mapping of BAAN field Tdssc045.cfrw to position. Used code and conversion table: TBtcedi456 (Conversion of Forwarding Agents)

Processing incoming

EDI subsystem: None

BAAN: Mapping of field value to BAAN field Tdpsc040.pron

Position	6	Field format	n..8	Field status	M
Field name	Freight forwarder – Transfer date				

Description: Date of shipment transfer to freight forwarder.

This field contains a numerical date with a maximum of 6 digits. The date is displayed in the following format: YYYYMMDD.

Processing outgoing

EDI-subsystem: None

BAAN: Mapping of BAAN field Tdssc045.cdat to position.

Processing incoming

EDI subsystem: None

BAAN: Mapping of field value in BAAN field Tdpsc040.idat

Position	7	Field format	n..4	Field status	M
Field name	Freight forwarder – Transfer time				

Description: Time of shipment transfer to freight forwarder.

This field contains a numerical time with a maximum of 4 digits. The time is displayed in the following form: *HHMM*.

Processing outgoing

EDI-subsystem: None

BAAN: Mapping of BAAN field Tdssc045.ctim to position.

Processing incoming

EDI subsystem: None

BAAN: Mapping of field value to BAAN field Tdpssc040.itim

Position	8	Field format	n..15	Field status	M
Field name	Gross shipment weight				

Description: Describes the gross weight of the shipment.

The field contains numerical code for the gross weight. The code is displayed in the following format:
NNNNNNNNNNNN.NNN.

Processing outgoing

EDI subsystem: None

BAAN: Mapping of BAAN field Tdssc045.wght to position.

Processing incoming

EDI subsystem: None

BAAN: Mapping of field value to BAAN field Tdpssc040.txta

Position	9	Field format	n..15	Field status	C
Field name	Net shipment weight				

Description: Describes the net weight of the shipment.
This field contains numerical code for the net weight.
Field Format: NNNNNNNNNNNN.NNN

Processing outgoing

EDI-subsystem: None

BAAN: Mapping of BAAN field Tdssc045.ntwt to position.

Processing incoming

EDI subsystem: None

BAAN: Mapping of field value to BAAN field Tdpsc040.txta

Position	10	Field format	an2	Field status	C
Field name	Postage code				

Description: This field indicates how to frank the shipment (unfranked,...)
It contains a unique alphanumerical identification.
01 = unfranked (unfrei)
02 = free destination (frei Bestimmungsort)
03 = free to the door (frei Haus)
04 = free German border (frei deutsche Grenze)
05 = free receiving carrier (frei Empfängerpediteur)
99 = special postage (Sonderfrankatur)
These codes have to be entered into the SCH basis tables in menu tdssc0189m000.

Processing outgoing

EDI-subsystem: None

BAAN: Mapping of BAAN field Tdssc045.term to position.

Processing incoming

EDI subsystem: None

BAAN: Mapping of field value to BAAN field Tdpsc040.txta

Position	11	Field format	n..4	Field status	C
Field name	Number of packages				

Description: This field contains the number of packages of one load.
One load unit equals one package.

Field Format: NNNN

Processing outgoing

EDI-subsystem: None

BAAN: Mapping of BAAN field Tdssc045.puqt to position.

Processing incoming

EDI subsystem: None

BAAN: Mapping field value to Tdpsc040.iedi (1).

Position	12	Field format	an2	Field status	M
Field name	Transportation unit code				

Description: This field contains the identification code of the used vehicle.

The code consists of 2 alphanumerical characters.

01 = vehicle identification (KFZ-Kennzeichen)

02 = Bordero number (Bordero-Nummer)

06 = mixed cargo number (Stückgut-Nummer)

07 = fast freight number (Expressgut-Nummer)

08 = wagon number (Waggon-Nummer)

09 = package number (Postpaket-Nummer)

10 = flight number and/or airbill number (Flug-Nr. und/oder
Luftfrachtbrief-Nr.)

11 = ship name (Schiffsname)

These codes have to be entered into the SCH basis tables in
menus tdssc0142m000 and tdssc0143m000.

Processing outgoing

EDI-subsystem: None

BAAN: Mapping of BAAN field Tdssc045.ecod to position.

Processing incoming

EDI subsystem: None

BAAN: Mapping of field value to BAAN field Tdssc040.iedi(2).

Position	13	Field format	an..10	Field status	M
Field name	Transportation unit number				

Description: This field contains the number of a used vehicle. For example for the code '1' (vehicle) the registration number.

It consists of an alphanumerical code.

Processing outgoing

EDI-subsystem: None

BAAN: Mapping of BAAN field Tdssc045.vhid to position.

Processing incoming

EDI subsystem: None

BAAN: Mapping of field value to BAAN field Tdpssc040.vhid.

Position	14	Field format	an..1	Field status	C
Field name	EDI-Code (supplier/ELP)				

Description: This field contains the identification of the supplier (ELP) / storekeeper.

It contains the following values:

Blank EDI by supplier

EDI by ELP

EDI by freight forwarder

Processing outgoing

EDI subsystem:

BAAN: This position will not be filled, here: (.,,.,,.,.).

Processing incoming

EDI subsystem: None

BAAN: None

Position	15	Field format	an..1	Field status	C
Field name	Delivery code				

Description: This field identifies a certain delivery type.

It contains the following values:

Blank default delivery (*Standardlieferung*)
 J Just-in-time-delivery (*JIT-Lieferung*)
 E express delivery (*Expreßlieferung*)

Processing outgoing

EDI subsystem:

BAAN: The position will not be filled; here (.,““;..).

Processing incoming

EDI subsystem: None

BAAN: None

BAAN: None

Position	16	Field format	an..17	Field status	C
Field name	Supplier's Plant Code				

Description: The Plant of the Supplier coded.

Processing outgoing

EDI subsystem: None.

BAAN: None.

Processing incoming

EDI subsystem: None

BAAN: None

Position	17	Field format	n..15	Field status	C
Field name	Load Volume				

Description: Volume of the Load.
 Field Format: NNNNNNNNNN.NNN

Processing outgoing

EDI subsystem: None.

BAAN: Mapping of BAAN field Tdssc045.vol to position.

Processing incoming

EDI subsystem: None

BAAN: None

Position	18	Field format	an..3	Field status	C
Field name	Unit Load Volume				

Description: This field contains the encoded measure of the shipped volume. The coding was carried out on the basis of ODETTE-Standard ODDC 25:
 Cubic millimeter MMQ
 Cubic centimeter CMQ
 Cubic meter MTQ
 Liter DMQ

Processing outgoing

EDI subsystem: None

BAAN: This position will not be filled, here: (.,“““;..).

Processing incoming

EDI subsystem: None

BAAN: None

Position	19	Field format	an..17	Field status	C
Field name	Number of the Transport Partner				

Description: The identification number of the party which is responsible for the transport of the goods. The number is defined by the customer.

Processing outgoing

EDI subsystem: None.

BAAN: Mapping of BAAN field Tdssc045.tpno to position.

Processing incoming

EDI subsystem: None

BAAN: None

Position	20	Field format	an..30	Field status	C
Field name	Name of the Forwarding Agent				

Description: The Name of the Forwarding Agent.

Processing outgoing

EDI subsystem: None.

BAAN: Mapping of BAAN field Tcmcs080.dsca to position.

Processing incoming

EDI subsystem: None

BAAN: None

Position	21	Field format	an7	Field status	M
Field name	End of record sign				

Description: This field identifies the end of the record.
'SA2_END'

Processing outgoing

EDI subsystem: None

BAAN: Mapping of value 'SA2_END' to position.

Processing incoming

EDI subsystem: Mapping of value 'SA2_END' to position.

BAAN: None

SA3 Shipping Note Header

Status:	Mandatory
Frequency:	Repeatable by shipment
Description:	This record type supports the transfer of shipping note data to a shipment. This record type is applied several times to one shipment.

SHIPMENT NOTIFICATION INHOUSE FORMAT					Mapping from Application Table Fields (out)		Mapping to Application Fields (in)	
Pos	FIELD DESCRIPTION	Key	ST	FM	Table Field	Action	Table Field	Action
1	Record type	O/I	M	an3	SA3		SA3	
2	Message reference	O/I	M	an..14	tcedi701.bano	Generation (see below)	tcedi702.bano	Generation by EDI subsystem
3	Network address customer / supplier		M	an..17	tcedi028.neta	Conversion (see below)	tcedi702.reno	Conversion (see below)
4	MBOL-Number Number, which the consignor assigns to the shipment/load.	O/I	M	n..9 an..30	tdssc045.mbol		tdpsc040.load	
5	Shipping note number	O/I	M	n..9 an..30	tdssc017.ides		tdpsc040.sdoc	
6	Supplier code		C	an..15	tccom010.osno		tdpsc040.sunno	
7	Arrival date planned Defined by the customer		C	n..8	tdssc046.idat		tdpsc040.aadt	
8	Arrival time planned		C	n..4	tdssc046.itim		tdpsc040.aatm	
9	Due date		C	n..8	tdssc046.exdt		tdpsc040.exdt	
10	Due time		C	n..4	tdssc046.exti		tdpsc040.exti	
11	Planned delivery date		C	n..8	tdssc046.ddat		tdpsc040.ddat	
12	Planned delivery time		C	n..6	tdssc046.dtim		tdpsc040.dtim	
13	Shipping date		M	n..8	tdsls045.ddat		tdpsc040.cdat	
14	Delivery point		M	an..32	tdssc002.delp		tdpsc040.dock	
15	Shipping type		M	an..2	tdssc017.trmd			
16	Transaction code Fixed value		C	an..1		not filled at the moment (...;...)		
17	Site customer		M	an..35	tdssc002.plnt		tdpsc040.tprf	
18	Consignee code Fixed value		C	an..1		not filled at the moment (...;..)		
19	Storage location customer		C	an..3	tdssc017.dock		tdpsc040.iedi(3)	

SHIPMENT NOTIFICATION INHOUSE FORMAT					Mapping from Application Table Fields (out)		Mapping to Application Fields (in)	
Pos	FIELD DESCRIPTION	Key	ST	FM	Table Field	Action	Table Field	Action
20	Line feed location Fixed value		C	an..14		not filled at the moment (...;“;..)		
21	Processing identification Fixed value “1”		M	an..1		not filled at the moment (...;“1“;...)	tdpsc040.proc	
22	Shipping time		C	n..4	tdssc017.dtim		tdpsc040.ctim	
23	Invoice Number		C	an...20	tccom000.namf	consists of tds480.ttyp + tds480.invn	tdpsc040.invn	
24	Invoice Date		C	n..8	tds480.date		tdpsc040.invd	
25	Invoice Currency		C	an..3	tds480.curr	Code and Conversion		
26	Invoice Amount (total)		C	n...13	tds480.invo			
27.	Net Weight		C	n..15	tdssc017.ntwt	Format: NNNNNNN NNNN.NNN		
28.	Volume		C	n..15	tdssc017.volu	Format: NNNNNNN NNNN.NNN		
29.	Number of Packages		C	n..4	tdssc017.puqt	Format: NNNN		
30.	Gross shipment note weight		C	n..15	tdssc017.wght	Format: NNNNNNN NNNN.NNN		
31.	Specific additional Document Number		C	an..17	not used at the moment		not used at the moment	
32.	Additional Plant Identification		C	an..17	tdssc017.cdel	Code and Conversion		
33.	Qualifier address code		M	an2	DP		DP	
34.	End of record sign Fixed value “SA3_END”		M	an7				

Detailed description

Position	1	Field format	an3	Field status	M
Field name	Record type			(key field out/in)	

Description: This field identifies the record type in the message block.
It contains the fixed value 'SA3'.

Processing outgoing

EDI subsystem: None

BAAN: The position is filled with the fixed value 'SA3'.

Processing incoming

EDI subsystem: The position is filled with the fixed value 'SA3'.

BAAN: None

Position	2	Field format	an..14	Field status	M
Field name	Message reference			(key field out/in)	

Description: This field identifies all connected records of one shipment notification. The message reference has to be clear by shipment notification. The numbering helps to control the chronological order of the shipment notifications and the complete transfer. The field consists of a fix part with four characters, the current date in the format YYMMDD and a serial number with four characters.

The special format is defined in the network parameters in BAAN table tcedi020. When generating the message reference with the EDI subsystem, the created message reference needs to be specific, that means unique. While storing the message reference BAAN controls whether it is specific.

Processing outgoing

EDI subsystem:

BAAN: BAAN generates this number to identify a shipment notification, stores it in the BAAN table field tcedi701.bano and writes it into all records of a shipment notification.

Processing incoming

EDI subsystem: The EDI subsystem generates this number to identify a shipment notification and writes it into all records of a shipment notification.

BAAN: Mapping to BAAN field Tcedi702.bano.

Position	3	Field format	an..17	Field status	M
Field name	Network address customer / supplier				(key field out/in)

Description: This field contains on the outgoing side the network address of the supplier and on the incoming side the network address of the customer.

Processing outgoing

EDI subsystem:

BAAN: The network address is stored in the BAAN table tcedi028 'Relations by network' under the corresponding business partner (supplier) and the corresponding network in the BAAN field Tcedi028.neta. The contents of this field is mapped to the position of the transfer file.

Processing incoming

EDI subsystem:

BAAN: The network address determines the corresponding business partner (customer) and the network in the BAAN table tcedi028 'Relations by network'. This identification is mapped to the BAAN field Tcedi702.reno.

Position 4	Field format	out: n..9 / in: an..30	Field status	M
Field name	MBOL-Number			

Description: The Master Bill of Lading-Number (*Sendungs-Ladungs-Bezugs-Nummer*) is the number which the consignor assigns to the shipment/load.

Processing outgoing

EDI subsystem: None

BAAN: Mapping of BAAN field Tdssc045.mbol to position.

Processing incoming

EDI subsystem: None

BAAN: Mapping of field value to BAAN field Tdpssc040.load.

Position 5	Field format	out: n..9 / in: an..30	Field status	M
Field name	Shipping Note Number			

Description: Describes the clear identification of the shipping note.
This field contains a clear shipping note number with a maximum of 9 digits.

Processing outgoing

EDI subsystem: None

BAAN: Mapping of BAAN field Tdssc017.ides to position.

Processing incoming

EDI subsystem: None

BAAN: Mapping of field value to BAAN field Tdpssc040.sdoc.

Position	6	Field format	an..15	Field status	C
Field name	Supplier code		(key field out/in)		

Description: This field contains the identification which a customer applies to the supplier.

This is the identification code of the supplier.

Processing outgoing

EDI-subsystem: None

BAAN: Mapping of BAAN field Tccom010.osno to position.

Processing incoming

EDI subsystem: None

BAAN: Mapping of field value to BAAN field Tdpsc040.suno.

Position	7	Field format	n..8	Field status	C
Field name	Arrival date planned				

Description: Defines the date at which the shipment arrives.

This field contains a numerical date with a maximum of 6 digits. The date is displayed in the following format:
YYYYMMDD.

Processing outgoing

EDI subsystem: None

BAAN: Mapping of BAAN field Tdssc046.idat to position.

Processing incoming

EDI subsystem: None

BAAN: Mapping of field value to BAAN field Tdpsc040.aadt.

Position	8	Field format	n..4	Field status	C
Field name	Arrival time planned				

Description: Defines the time at which the shipment arrives. It is defined by the customer.

This field contains a numerical time with a maximum of 4 digits. The time is displayed in the following format: *'HHMM'*.

Processing outgoing

EDI subsystem: None

BAAN: Mapping of BAAN field Tdpssc046.itim to position.

Processing incoming

EDI subsystem: None

BAAN: Mapping of field value to BAAN field Tdpssc040.aatm.

Position	9	Field format	n..8	Field status	C
Field name	Due Date				

Description: Defines the date at which the shipment is required.

This field contains a numerical date with a maximum of 6 digits. The date is displayed in the following format: *YYYYMMDD*.

Processing outgoing

EDI subsystem: None

BAAN: Mapping of BAAN field Tdssc046.exdt to position.

Processing incoming

EDI subsystem: None

BAAN: Mapping of field value to BAAN field Tdpssc040.exdt

Position	10	Field format	n..4	Field status	C
Field name	Due time				

Description: Defines the time at which the shipment is required.

This field contains a numerical time with a maximum of 4 digits. The time is displayed in the following format: *'HHMM'*.

Processing outgoing

EDI subsystem: None

BAAN: Mapping of BAAN field Tdpssc046.exti to position.

Processing incoming

EDI subsystem: None

BAAN: Mapping of field value to BAAN field Tdpssc040.exti.

Position	11	Field format	n..8	Field status	C
Field name	Planned delivery date				

Description: Defines the date at which the shipment was/is planned.

This field contains a numerical date with a maximum of 6 digits. The date is displayed in the following format: YYYYMMDD.

Processing outgoing

EDI subsystem: None

BAAN: Mapping of BAAN field Tdssc046.ddat to position.

Processing incoming

EDI subsystem: None

BAAN: Mapping of field value to BAAN field Tdpssc040.ddat.

Position	12	Field format	n..4	Field status	C
Field name	Planned delivery time				

Description: Defines the time at which the shipment was/is planned.

This field contains a numerical time with a maximum of 4 digits. The time is displayed in the following format: *'HHMM'*.

Processing outgoing

EDI subsystem: None

BAAN: Mapping of BAAN field Tdpssc046.dtim to position.

Processing incoming

EDI subsystem: None

BAAN: Mapping of field value to BAAN field Tdpssc040.dtim.

Position	13	Field format	n..8	Field status	M
Field name	Shipping date				

Description: Defines the date of the shipment.

This field contains a numerical date with a maximum of 6 digits. The date is displayed in the following format: 'JJMMTT'

Processing outgoing

EDI subsystem: None

BAAN: Mapping of BAAN field Tdpsc017.ddat to position.

Processing incoming

EDI subsystem: None

BAAN: Mapping of field value to BAAN field Tdpsc040.cdat.

Position	14	Field format	an..32	Field status	M
Field name	Delivery point				

Description: Describes the delivery point at the customer's site.

This field contains an alphanumerical code for the delivery point.

Processing outgoing

EDI-subsystem: None

BAAN: Splitting over reference in BAAN table tdssc018 (current purchase shipment notification). Mapping of BAAN field Tdssc002.delp to position. Note: In case of a VDA-Message, this field is allowed to have a maximum length of an..5!

Processing incoming

EDI subsystem: None

BAAN: Mapping of field value to BAAN field Tdpsc040.dock.

Position	15	Field format	an..2	Field status	M
Field name	Shipping type				

Description: Describes the key for the type of shipment.

This field contains an alphanumerical code which might be:

- 01 = truck subsupplier (LKW Unterlieferant)
- 02 = truck customer (LKW Kunde)
- 03 = truck carrier (LKW Spedition)
- 04 = truck rail (LKW Bahn)
- 05 = truck self (supplier) (LKW eigen (Lieferant))
- 06 = rail freight (Bahn Fracht)
- 07 = rail express (Bahn Expres)
- 08 = rail wagon (Bahn Waggon)
- 09 = mail (Postsendung)
- 10 = air freight (Luftfracht)
- 11 = sea freight (Seefracht)
- 20 = private parcels service (Privater Paketdienst)

Processing outgoing

EDI-subsystem: None

BAAN: Mapping of BAAN field Tdssc017.trmd to position.

Processing incoming

EDI subsystem: None

BAAN: None

Position	16	Field format	an..1	Field status	C
Field name	Transaction code				

Description: This field is reserved for later extensions.

It is not defined.

Processing outgoing

EDI-subsystem: None

BAAN: This position will not be filled, here (...;““;...).

Processing incoming

EDI subsystem: None

BAAN: None

Position	17	Field format	an..35	Field status	M
Field name	Site customer				

Description: Describes the site of the customer.

This field contains the alphanumeric code for the site of the customer.

Processing outgoing

EDI-subsystem: None

BAAN: Splitting over reference in BAAN table tdssc018 (current purchase shipment notification). Mapping of BAAN field Tdssc002.delp to position.

Processing incoming

EDI subsystem: None

BAAN: Mapping of field value to BAAN field Tdpdc040.tprf.

Position	18	Field format	an..1	Field status	C
Field name	Warenempfänger Nr.				

Description: This field is reserved for later extensions.

It is not defined.

Processing outgoing

EDI-subsystem: None

BAAN: This position will not be filled, here (...;““;...).

Processing incoming

EDI subsystem: None

BAAN: None

Position	19	Field format	an..3	Field status	M
Field name	Storage location customer				

Description: Describes the storage location of the customer, where the shipment is stored.

This field contains an alphanumeric code.

Processing outgoing

EDI-subsystem: None

BAAN: Mapping of BAAN field Tdssc017.dock to position.

Processing incoming

EDI subsystem: None

BAAN: Mapping of field value to BAAN field Tdpsc040.iedi(3).

Position	20	Field format	an..1	Field status	C
Field name	Line feed location				

Description: This field is reserved for later extensions.

It is not defined.

Processing outgoing

EDI-subsystem: None

BAAN: This position will not be filled, here (...;““;...).

Processing incoming

EDI subsystem: None

BAAN: None

Position	21	Field format	an..1	Field status	M
Field name	Processing identification				

Description: This field controls the correct processing of incoming messages in BAAN.

It is defined with the fixed value '1'.

Processing outgoing

EDI-subsystem: None

BAAN: Mapping of fixed value '1' to position (...;“1“;...).

Processing incoming

EDI subsystem: None

BAAN: Mapping of field value to BAAN field Tdssc040.proc.

Position	22	Field format	n..6	Field status	C
Field name	Shipping Time				

Description: The time that the goods are planned to leave the premises.

Processing outgoing

EDI-subsystem: None

BAAN: Mapping of BAAN field Tdssc017.dtim to position.

Processing incoming

EDI subsystem: None

BAAN: Mapping of field value to BAAN field Tdssc040.ctim.

Position	23	Field format	an..20	Field status	C
Field name	Invoice number				

Description: This field contains the identification number, which the supplier applied to a created invoice.

Processing outgoing

EDI-subsystem: None

BAAN: The outgoing invoice number consists of the fields Tdsls480.ttyp and Tdsls480.invn. Sending out a VDA conform message, the series in the BAAN module Finance has to be set in a way that the numerical part of the transaction type consists of not more than 5 digits /tfgld0111m000).

Processing incoming

EDI subsystem: None

BAAN: Mapping of field value to BAAN field Tdpsc040.invn.

Position	24	Field format	n..8	Field status	C
Field name	Invoice date				

Description: This fields contains the date of the current invoice. (format: *YYYYMMDD*)

Processing outgoing

EDI-subsystem: None

BAAN: Mapping of BAAN field Tdsls480.date to position.

Processing incoming

EDI subsystem: None

BAAN: Mapping of field value to BAAN field Tdpsc040.invd.

Position	25	Field format	an..3	Field status	C
Field name	Invoice Currency				

Description: This field indicates the currency of the invoice. It contains the clear alphanumerical identification of the invoice. The currency code will be defined according to ISO 4217, e.g. '280' for German mark (DM).

Processing outgoing

EDI-subsystem: None

BAAN: Used code and conversion table: 'Maintain Conversion of Currency Codes (out)' (tcedi4138m000). Mapping of BAAN field Tdsls480.curr to position.

Processing incoming

EDI subsystem: None

BAAN: None

Position	26	Field format	n..13	Field status	C
Field name	Invoice Amount (total)				

Description: This field contains the total invoice amount. The field contains the numerical amount of the invoice (format: *NNNNNNNNNN.NN*).

Processing outgoing

EDI-subsystem: None

BAAN: Mapping of BAAN field Tdsls480.invo to position.

Processing incoming

EDI subsystem: None

BAAN: None

Position	27	Field format	n..15	Field status	C
Field name	Net weight				

Description: This field contains the net weight of the shipment.

Field Format: *NNNNNNNNNN.NNN*

Processing outgoing

EDI-subsystem: None

BAAN: Mapping of BAAN field Tdssc017.ntwt to position.

Processing incoming

EDI subsystem: None

BAAN: None

Position	28	Field format	n..15	Field status	C
Field name	Volume				

Description: This field contains the total volume of the shipment

Field Format: *NNNNNNNNNNN.NNN*

Processing outgoing

EDI-subsystem: None

BAAN: Mapping of BAAN field Tdssc017.volu to position.

Processing incoming

EDI subsystem: None

BAAN: None

Position	29	Field format	n..4	Field status	C
Field name	Number of Packages				

Description: This field contains the number of packages per shipment. Field format: *NNNN*.

Processing outgoing

EDI-subsystem: None

BAAN: Mapping of BAAN field Tdssc017.puqt to position.

Processing incoming

EDI subsystem: None

BAAN: None

Position	30	Field format	n..15	Field status	M
Field name	Gross shipment note weight				

Description: Describes the gross weight of the shipment note.

The field contains numerical code for the gross weight. The code is displayed in the following format:
NNNNNNNNNNNN.NNN.

Processing outgoing

EDI subsystem: None

BAAN: Mapping of BAAN field Tdssc017.wght to position.

Processing incoming

EDI subsystem: None

BAAN: Mapping of field value to BAAN field Tdpsc040.txta

Position	31	Field format	an..17	Field status	M
Field name	Specific additional Document Number				

Description: This position has been defined for later use. In special cases e.g. you have to transmit BMW's SPAB Number this position should be used.

Processing outgoing

EDI subsystem: None.

BAAN: None.

Processing incoming

EDI subsystem: None.

BAAN: None.

Position	32	Field format	an..17	Field status	M
Field name	Additional Plant Identification				

Description: This position should contain the additional plant identification demanded by some assembler (e.g. Ford). Therefore it is necessary to convert the delivery address code to a code in the message using the qualifier "DP" in position 33. Please refer to the additional information which are given above.

Processing outgoing

EDI subsystem: Mapping of BAAN field Tdssc017.cdel to position and conversion using the session tcedi4148m000.

BAAN: None.

Processing incoming

EDI subsystem: None.

BAAN: None.

Position	33	Field format	an2	Field status	M
Field name	Qualifier address code				

Description: This field contains the qualifier address code which is used to determine the delivery address from the value in position 32. This position must be filled with the fixed value 'DP'.

Processing outgoing

EDI subsystem: This field is filled with the fixed value 'DP'.

BAAN: None.

Processing incoming

EDI subsystem: This field is filled with the fixed value 'DP'.

BAAN: None.

Position	34	Field format	an7	Field status	M
Field name	End of record sign				

Description: This field indicates the end of the record.
'SA3_END'

Processing outgoing

EDI subsystem: None

BAAN: The field is filled with the fixed value 'SA3_END'.

Processing incoming

EDI subsystem: The field is filled with the fixed value 'SA3_END'.

BAAN: None

SA4 Shipping Note Position

Status:	Mandatory
Frequency:	Repeatable by shipping note header
Description:	This record type supports the transfer of position-specific shipping note data. It is directly connected to the previous record type SA3 and can occur several times, but will occur at least one time.

SHIPMENT NOTIFICATION INHOUSE FORMAT					Mapping from Application Table Fields (out)		Mapping to Application Fields (in)	
Pos	FIELD DESCRIPTION	Key	ST	FM	Table Field	Action	Table Field	Action
1	Record type	O/I	M	an3		Constant 'SA4'	SA4	
2	Message reference	O/I	M	an..14	tcedi701.bano	Generation (see below)	tcedi702.bano	Generation by EDI subsystem
3	Network address supplier / customer		M	an..17	tcedi028.neta	Conversion (see below)	tcedi702.reno	Conversion (see below)
4	MBOL-Number Number, which the consignor assigns to the shipment/load.	O/I	M	n..9	tdssc045.mbol		tdpsc040.load	
5	Shipping note number	O/I	M	n..9	tdssc018.ides		tdpsc040.sdoc	
6	Position shipping note number	O/I	M	n..3	tdssc018.pono		tdpsc041.pono	
7	Customer article code		M	an..35	tdssc018.cпно		tdpsc041.item	
8	Supplier article code		M	an..35	tdssc018.item		tdpsc041.cпно	
9	Country of origin		M	an..3	tiitm001.ctyo	Conversion (see below)	tdpsc041.ccty	Conversion (see below)
10	Shipped quantity		M	n..15	tdssc018.cqty		tdpsc041.iqty	
11	Unit of shipped quantity		M	an..3	tdssc018.cuqs	Conversion (see below)	tdpsc041.cuqp	Conversion (see below)
12	Customer order number (1)		C	an..17 an..30	tdssc001.cono		tdpsc041.cono	
13	Gross weight shipment position		C	n..15	tdssc018.grwt		tdpsc041.grwt	
14	Shipment notification code Constant		C	an..1		not filled at the moment (...;“;...)		
15	Lot number		C	an..16	tdssc018.clot		tdpsc041.clot	
16	Use code		M	an..1	tdssc018.appc		tdpsc041.appc	

Message Type Shipment Notification Definition of BEMIS 2.1 Inhouse Format

SHIPMENT NOTIFICATION INHOUSE FORMAT					Mapping from Application Table Fields (out)		Mapping to Application Fields (in)	
Pos	FIELD DESCRIPTION	Key	ST	FM	Table Field	Action	Table Field	Action
17	Preference status Constant		M	an..1		Constant: (...;"G";...)		
18	Dutiable goods Constant		M	an..1		filled with one blank as fixed value (...;" ";...)		
19	Key for changed item Constant		M	an..2		filled with one blank as fixed value (...;" ";...)		
20.	Customer Part Number Revision Level		C	an..17	tdssc018.crev			
21	Customer Part Number Revision Level Description		C	an..30	tdssc605.desc			
22	Customer Part Number Revision Level Effective Date		C	n..8	tdssc605.refd			
23	Customer Part Number Expiry Date		C	n..8	tdssc605.rexd			
24	Customer Part Number specially for BMW		C	an..30	tdssc018.iedi(5)	consists of tdssc018.cpn o + tdssc018.crev		
25	Customer order number taken from the delivered schedule		C	an..17	tdssc018.cono			
26	Cumulative Delivered Quantity		C	n..15	tdssc007.cqty	Field Format: NNNNNNNN. NNNN		
27	Standardization Organization		C	an..3	tiitm950.sorg			
28	Hazard Class		C	n..2	tiitm950.hacl			
29	Material Code		C	n..6	tiitm950.maco			

SHIPMENT NOTIFICATION INHOUSE FORMAT					Mapping from Application Table Fields (out)		Mapping to Application Fields (in)	
Pos	FIELD DESCRIPTION	Key	ST	FM	Table Field	Action	Table Field	Action
30	Proper Shipping Name		C	an..35	tiitm950.shna			
31	Packing Group		C	an..4	tiitm950.pgrp			
32	End of record sign Constant 'SA4_END"		M	an7		Constant "SA4_END"		

Detailed description

Position	1	Field format	an3	Field status	M
Field name	Record type		(key field out/in)		

Description: This field identifies the record type in the message block.
It contains the fixed value 'SA4'.

Processing outgoing

EDI subsystem: None

BAAN: The position is filled with the fixed value 'SA4'.

Processing incoming

EDI subsystem: The position is filled with the fixed value 'SA4'.

BAAN: None

Position	2	Field format	an..14	Field status	M
Field name	Message reference		(key field out/in)		

Description: This field identifies all connected records of one shipment notification. The message reference has to be clear by shipment notification. The numbering helps to control the chronological order of the shipment notifications and the complete transfer. The field consists of a fix part with four characters, the current date in the format YYMMDD and a serial number with four characters.

The special format is defined in the network parameters in BAAN table tcedi020. When generating the message reference with the EDI subsystem, the created message reference needs to be specific, that means unique. While storing the message reference BAAN controls whether it is specific.

Processing outgoing

EDI subsystem:

BAAN: BAAN generates this number to identify a shipment notification, stores it in the BAAN table field tcedi701.bano and writes it into all records of a shipment notification.

Processing incoming

EDI subsystem: The EDI subsystem generates this number to identify a shipment notification and writes it into all records of a shipment notification.

BAAN: Mapping to BAAN field Tcedi702.bano

Position	3	Field format	an..17	Field status	M
Field name	Network address customer / supplier (key field out/in)				

Description: This field contains on the outgoing side the network address of the supplier and on the incoming side the network address of the customer.

Processing outgoing

EDI subsystem:

BAAN: The network address is stored in the BAAN table tcedi028 'Relations by network' under the corresponding business partner (supplier) and the corresponding network in the BAAN field Tcedi028.neta. The contents of this field is mapped in the position of the transfer file.

Processing incoming

EDI subsystem:

BAAN: The network address determines the corresponding business partner (customer) and the network in the BAAN table tcedi028 'Relations by network'. This identification is mapped in the BAAN field Tcedi702.reno.

Position	4	Field format	n..9	Field status	M
Field name	MBOL-Number				

Description: The Master Bill of Lading-Number (*Sendungs-Ladungs-Bezugs-Nummer*) is the number which the consignor assigns to the shipment/load.

Processing outgoing

EDI subsystem: None

BAAN: Mapping of BAAN field Tdssc045.mbol to position.

Processing incoming

EDI subsystem: None

BAAN: Mapping of field value to BAAN field Tdpsc040.load

Position	5	Field format	n..9	Field status	M
Field name	Shipping note number				

Description: Describes the clear identification of the shipping note.
This field contains a clear shipping note number with a maximum of 9 digits.

Processing outgoing

EDI subsystem: None

BAAN: Mapping of BAAN field Tdssc018.ides to position.

Processing incoming

EDI subsystem: None

BAAN: Mapping of field value to BAAN field Tdpsc040.ides.

Position	6	Field format	n..3	Field status	M
Field name	Shipping note number position				

Description: Describes the clear identification of the shipping note position.
This field contains a clear shipping note position with a maximum of 3 digits.

Processing outgoing

EDI subsystem: None

BAAN: Mapping of BAAN field Tdssc018.pono to position.

Processing incoming

EDI subsystem: None

BAAN: Mapping of field value to field tdpSC041.pono

Position	7	Field format	an..35	Field status	M
Field name	Customer article code				

Description: Describes the identification of the item by the customer.

This field contains the alphanumerical item identification with a maximum of 35 characters.

Processing outgoing

EDI-subsystem: None

BAAN: Mapping of BAAN field Tdssc018.cpono to position.

Processing incoming

EDI subsystem: None

BAAN: Mapping of field value to field tdpSC041.item.

Position	8	Field format	an..35	Field status	M
Field name	Supplier article code				

Description: Describes the identification of the item by the supplier.

This field contains the alphanumerical item identification with a maximum of 35 characters.

Processing outgoing

EDI-subsystem: None

BAAN: Mapping of BAAN field Tdssc018.item to position.

Processing incoming

EDI subsystem: None

BAAN: Mapping of field value to field tdpSC041.cpono.

Position	9	Field format	an..3	Field status	M
Field name	Country of origin				

Description: This field contains the identification of the country of origin for an item according to ODDC 6.

AT: Austria
 BE: Belgium
 CH: Switzerland
 DE: Federal Republic of Germany
 DK: Denmark
 ES: Spain
 FI: Finland
 FR: France
 GB: United Kingdom
 GR: Greece
 IE: Ireland
 IT: Italy
 LU: Luxembourg
 NL: Netherlands
 NO: Norway
 PT: Portugal
 SE: Sweden
 TR: Turkey
 YU: Yugoslavia

Processing outgoing

EDI-subsystem: None

BAAN: Conversion of field value of BAAN field Tiitm001.ctyo.
 Mapping of conversion value to position.

Processing incoming

EDI subsystem: Conversion according to code table.

BAAN: Conversion of position value. Mapping of conversion value to BAAN field Tdpsc041.cty.

Position	10	Field format	n..15	Field status	M
Field name	Shipped quantity				

Description: Describes the shipped quantity of the related shipment notification position.

This field contains a numerical value for the shipped quantity. It is displayed in the following format:
 'NNNNNNNNNNNN.NNNN'.

Processing outgoing

EDI subsystem: None

BAAN: Mapping of BAAN field Tdssc018.cqty to position.

Processing incoming

EDI subsystem: None

BAAN: Mapping of field value to field tdpsc041.iqty.

Position	11	Field format	an..3	Field status	M
Field name	Unit of shipped quantity				

Description: This field contains the encoded measure of the shipped quantity. The coding was carried out on the basis of ODETTE-Standard ODDC 25:

- Millimeter MMT
- Centimeter CMT
- Meter MTR
- Kilometer KMT
- Square millimeter MMK
- Square centimeter CMK
- Square meter MTK
- Cubic millimeter MMQ
- Cubic centimeter CMQ
- Cubic meter MTQ
- Liter DMQ
- Gram GRM
- Kilogram KGM
- Metric ton TON
- Piece PCE

If you want to transfer additional units of measurement, you need to enter them in the session tcedi2130m000 'Maintain units' for the company **BEM**.

Processing outgoing

EDI subsystem: None

BAAN: Mapping of BAAN field Tdssc041.cuqp to position.

Processing incoming

EDI subsystem: None

BAAN: Mapping of field value to field tdpSC041.cuqp.

Position	12	Field format	an..17	Field status	C
Field name	Customer order number				

Description: Describes the customer order number for the corresponding position of the contract.
This field contains an alphanumerical code with a maximum of 17 characters.

Processing outgoing

EDI-subsystem: None

BAAN: Mapping of BAAN field Tdssc001.cono to position.

Processing incoming

EDI subsystem: None

BAAN: Mapping of field value to BAAN field TdpSC041.cono.

Position	13	Field format	n..15	Field status	C
Field name	Gross weight shipment position				

Description: Describes the gross weight of the related shipment position.
This field contains a numerical value for the shipped quantity.
It is displayed in the following format:
'NNNNNNNNNNNN.NNNN'.

Processing outgoing

EDI subsystem: None

BAAN: Mapping of BAAN field Tdssc018.grwt to position.

Processing incoming

EDI subsystem: None

BAAN: Mapping of field value to BAAN field TdpSC041.grwt.

Position	14	Field format	an..1	Field status	C
Field name	Shipment notification code				

Description: This field is reserved for later extensions.

Processing outgoing

EDI subsystem: None

BAAN: This position is not filled at the moment, here (...;““;...).

Processing incoming

EDI subsystem: None

BAAN: None

Position 15	Field format	out an..1 / in an..16	Field status	C
Field name	Lot number			

Description: This field is reserved for later extensions.

Processing outgoing

EDI subsystem: None

BAAN: Mapping of BAAN field Tdssc018.clot to position.

Processing incoming

EDI subsystem: None

BAAN: Mapping of field value to field tdpsc041.clot

Position	16	Field format	an..1	Field status	M
Field name	Use Code				

Description: Describes the usage of encoded shipment positions.

Processing outgoing

EDI subsystem: None

BAAN: Mapping of BAAN field Tdssc018.appc to position.

Processing incoming

EDI subsystem: None

BAAN: Mapping of field value to BAAN field Tdpsc041.appc.

Position	17	Field format	an..1	Field status	M
Field name	Preference Status				

Description: This field is reserved for later extensions.

Processing outgoing

EDI subsystem: None

BAAN: Mapping of “G” to position: (...;“G”;...).

Processing incoming

EDI subsystem: None

BAAN: None

Position	18	Field format	an..1	Field status	M
Field name	Dutiable Goods				

Description: This field is reserved for later extensions.

It will not be filled.

Processing outgoing

EDI subsystem: None

BAAN: Mapping of one blank as fixed value to position (...;“ ”;...).

Processing incoming

EDI subsystem: None

BAAN: None

Position	19	Field format	an..1	Field status	M
Field name	Key for changed item				

Description: This field is reserved for later extensions.

Processing outgoing

EDI subsystem: None

BAAN: Mapping of two blanks as fixed value to position: (...;“ ”;...).

Processing incoming

EDI subsystem: None

BAAN: None

Position	20	Field format	an..17	Field status	C
Field name	Customer Part Number Revision Level				

Description: Record the current revision number of the Customer's Part Number.

Processing outgoing

EDI subsystem: None

BAAN: Mapping of BAAN field Tdssc018.crev to position.

Processing incoming

EDI subsystem: None

BAAN: None.

Position	21	Field format	an..17	Field status	C
Field name	Customer Part Number Revision Level Description				

Description: Description of the revision change.

Processing outgoing

EDI subsystem: None

BAAN: Mapping of BAAN field Tdssc605.desc to position.

Processing incoming

EDI subsystem: None

BAAN: None.

Position	22	Field format	n..8	Field status	C
Field name	Customer Part Number Revision Level Effective Date				

Description: Date on which the revision becomes effective. This date may not be less than or equal to an effective date of an earlier revision.

Format YYYYMMDD

Processing outgoing

EDI subsystem: None

BAAN: Mapping of BAAN field Tdssc605.refd to position.

Processing incoming

EDI subsystem: None

BAAN: None.

Position	23	Field format	n..8	Field status	C
Field name	Customer Part Number Revision Level Expiry Date				

Description: Date on which revision expires. This cannot be equal to or less than the effective date.

Format YYYYMMDD

Processing outgoing

EDI subsystem: None

BAAN: Mapping of BAAN field Tdssc605.rexd to position.

Processing incoming

EDI subsystem: None

BAAN: None.

BAAN: None.

Position	24	Field format	an..30	Field status	C
Field name	Customer Part Number specially for BMW				

Description: BMW wants to have a special Part Number. The maximum length is 22. Normally the part number has 7 or 10 positions. From position 17 to 22 BMW adds the revision information.

Processing outgoing

EDI subsystem: None

BAAN: Mapping of BAAN field Tdssc018.iedi(5) to position. The position consists of Tdssc018.cpdo and starting with position 17 the information of Tdssc018.crev.

Processing incoming

EDI subsystem: None

BAAN: None.

Position	25	Field format	an..17	Field status	C
Field name	Customer order number				

Description: Describes the customer order number which has been sent out within the corresponding schedule.
This field contains an alphanumerical code with a maximum of 17 characters.

Processing outgoing

EDI-subsystem: None

BAAN: Mapping of BAAN field Tdssc018.cono to position.

Processing incoming

EDI subsystem: None

BAAN: None

Position	26	Field format	an..17	Field status	C
Field name	Cumulative Delivered Quantity				

Description: The total quantity of all shipments under the corresponding contract after this shipment position has been delivered.
Field format: NNNNNNNN.NNNN (8.4)

Processing outgoing

EDI-subsystem: None

BAAN: Mapping of BAAN field Tdssc007.cqty to position.

Processing incoming

EDI subsystem: None

BAAN: None

Position	27	Field format	an..3	Field status	C
Field name	Standardization Organization				

Description: The abbreviated name of the standardization organization according to which the hazardous materials coding will be done. E. g. UN, EN, DIN, BS, etc.

Processing outgoing

EDI-subsystem: None

BAAN: Mapping of BAAN field Tiitm950.sorg to position.

Processing incoming

EDI subsystem: None

BAAN: None

Position	28	Field format	n..2	Field status	C
Field name	Hazard Class				

Description: The hazard class according to the standardization organization used.

Example according to UN:

- 1 = Not used
- 2 = Gases
- 3 = Flammable liquids
- 4 = Flammable solids
- 5 = Oxydable
- 6 = Poisonous
- 7 = Radioactive
- 8 = Corrosive
- 9 = Danger of severe chemical reaction

Other standardization organizations use similar systems.

A doubling of the digit means the danger is particularly severe.

Processing outgoing

EDI-subsystem: None

BAAN: Mapping of BAAN field Tiitm950.hacl to position.

Processing incoming

EDI subsystem: None

BAAN: None

Position	29	Field format	n..6	Field status	C
Field name	Material Code				

Description: The material code for the hazardous material.
 For example, UN provides a list, on which all hazardous materials allowed for transport under UN agreement, are coded. This code allows a direct identification of the substance. Other standards use similar coding systems.

Processing outgoing

EDI-subsystem: None

BAAN: Mapping of BAAN field Tiitm950.maco to position.

Processing incoming

EDI subsystem: None

BAAN: None

Position	30	Field format	an..35	Field status	C
Field name	Proper Shipping Name				

Description: The proper shipping name for the respective item. The proper shipping name is the technically correct name for the hazardous material, which might be carried under its marketing name elsewhere.

Processing outgoing

EDI-subsystem: None

BAAN: Mapping of BAAN field Tiitm950.shna to position.

Processing incoming

EDI subsystem: None

BAAN: None

Position	31	Field format	an..4	Field status	C
Field name	Packing Group				

Description: The code of the packing the hazardous materials are shipped in.

Processing outgoing

EDI-subsystem: None

BAAN: Mapping of BAAN field Tiitm950.pgrp to position.

Processing incoming

EDI subsystem: None

BAAN: None

Position	32	Field format	an7	Field status	M
Field name	End of record sign				

Description: This field identifies the end of the record.

Contents: 'SA4_END'

Processing outgoing

EDI-subsystem: None

BAAN: The position is filled with the fixed value 'SA4_END'.

Processing incoming

EDI subsystem: The position is filled with the fixed value 'SA4_END'.

BAAN: None

SA5 Packaging Position

Status :	Optional
Frequency:	Repeatable by shipping note position
Description:	This record type supports the transfer of position-specific packaging data. It is directly connected to the previous record type SA4 and can occur several times.

SHIPMENT NOTIFICATION INHOUSE FORMAT					Mapping from Application Table Fields (out)		Mapping to Application Fields (in)	
Pos	FIELD DESCRIPTION	Key	ST	FM	Table Field	Action	Table Field	Action
1	Record type	O/I	M	an3	SA5		SA5	
2	Message reference	O/I	M	an..14	tcedi701.bano	Generation (see below)	tcedi702.bano	Generation by EDI subsystem
3	Network address supplier / customer		M	an..17	tcedi028.neta	Conversion (see below)	tcedi702.reno	Conversion (see below)
4	MBOL-Number Number, which the consignor assigns to the shipment/load..	O/I	M	n..9	tdssc045.mbol		tdpsc040.load	
5	Shipping note number (shipping note header ssc017)	O/I	M	n..9 an..30	tdssc019.ides		tdpsc040.sdoc	
6	Position shipping note number	O/I	M	n..3	tdssc019.pono		tdpsc041.pono	
7	Packaging number customer		M	an..35 an..16	tdssc019.item	Conversion (see below)	tdpsc042.item	
8	Packaging number supplier		M	an..35 an..25	tdssc019.item		tdpsc042.sitm	
9	Number packages		M	n..6	tdssc019.puqt		tdpsc042.puqt	
10	Filling quantity		C	n..15	tdssc019.cqty		tdpsc042.cqty	
11	Unit of shipped quantity		C	an..3	tdssc018.cuqs	Conversion (see below)	tdpsc042.cuqs	Conversion (see below)
12	Serial number from		C	n..6 an..30	tdssc019.pnof		tdpsc042.pano	
13	Serial number to		C	n..6 an..30	tdssc019.pnot		tdpsc042.pant	
14	Storage load factor		C	an..1 n..4		not filled at the moment (...;“;...)	tdpsc042.stfc	

SHIPMENT NOTIFICATION INHOUSE FORMAT					Mapping from Application Table Fields (out)		Mapping to Application Fields (in)	
Pos	FIELD DESCRIPTION	Key	ST	FM	Table Field	Action	Table Field	Action
15	Label identification		C	n1	tdssc019.lblc		tdpsc042.lblc	
16	Packaging identification (returnable yes/no)		C	an1	tiitm001.onew		tdpsc042.pidn	
17	Property identification		C	an1			tdpsc042.prid	
18	Packaging Typ			n1	tdssc019.ptyp		tdpsc042.ptyp	
19	Parent Package Number			n..4 an..30	tdssc019.ppon		tdpsc042.ppno	
20	Parent Advice Note			n..9	tdssc019.pdes			
21	Parent Package Position			n..4	tdssc019.ppnb			
22	Qualifier item number		M	an2	SA		SA	
23.	Package Level		C	n..8	tdssc019.plvl			
24.	Reference / Customer Authorization		C	an..12	tdssc019.ican			
25.	End of record sign Constant 'SA5_END'		M	an7	'SA5_END'		'SA5_END'	

Detailed description

Position	1	Field format	an3	Field status	M
Field name	Record type			(key field out/in)	

Description: This field identifies the record type in the message block.
It contains the fixed value 'SA5'.

Processing outgoing

EDI subsystem: None

BAAN: The position is filled with the fixed value 'SA5'.

Processing incoming

EDI subsystem: The position is filled with the fixed value 'SA5'.

BAAN: None

Position	2	Field format	an..14	Field status	M
Field name	Message reference			(key field out/in)	

Description: This field identifies all connected records of one shipment notification. The message reference has to be clear by shipment notification. The numbering helps to control the chronological order of the shipment notifications and the complete transfer. The field consists of a fix part with four characters, the current date in the format YYMMDD and a serial number with four characters.

The special format is defined in the network parameters in BAAN table tcedi020. When generating the message reference with the EDI subsystem, the created message reference needs to be specific, that means unique. While storing the message reference BAAN controls whether it is specific.

Processing outgoing

EDI subsystem:

BAAN: BAAN generates this number to identify a shipment notification, stores it in the BAAN table field tcedi701.bano and writes it into all records of a shipment notification.

Processing incoming

EDI subsystem: The EDI subsystem generates this number to identify a shipment notification and writes it into all records of a shipment notification.

BAAN: Mapping to BAAN field Tcedi702.bano

Position	3	Field format	an..17	Field status	M
Field name	Network address customer / supplier (key field out/in)				

Description: This field contains on the outgoing side the network address of the supplier and on the incoming side the network address of the customer.

Processing outgoing

EDI subsystem:

BAAN: The network address is stored in the BAAN table tcedi028 'Relations by network' under the corresponding business partner (supplier) and the corresponding network in the BAAN field Tcedi028.neta. The contents of this field is mapped in the position of the transfer file.

Processing incoming

EDI subsystem:

BAAN: The network address determines the corresponding business partner (customer) and the network in the BAAN table tcedi028 'Relations by network'. This identification is mapped to the BAAN field Tcedi702.reno.

Position	4	Field format	n..9	Field status	M
Field name	MBOL-Number				

Description: The Master Bill of Lading-Number (*Sendungs-Ladungs-Bezugs-Nummer*) is the number which the consignor assigns to the shipment/load.

Processing outgoing

EDI subsystem: None

BAAN: Mapping of BAAN field Tdssc045.mbol to position.

Processing incoming

EDI subsystem: None

BAAN: Mapping of field value to BAAN field Tdpsc040.load

Position 5	Field format	out n..9 / in an..30	Field status	M
Field name	Shipping Note Number			

Description: Describes the clear identification of the shipping note.
This field contains a clear shipping note number with a maximum of 9 digits.

Processing outgoing

EDI subsystem: None

BAAN: Mapping of BAAN field Tdssc019.ides to position.

Processing incoming

EDI subsystem: None

BAAN: Mapping of field value to BAAN field Tdpsc040.sdoc.

Position	6	Field format	n..3	Field status	M
Field name	Position Shipping Note Number				

Description: Describes the clear identification of the shipping note position.
This field contains a clear shipping note position with a maximum of 3 digits.

Processing outgoing

EDI subsystem: None

BAAN: Mapping of BAAN field Tdssc019.pono to position.

Processing incoming

EDI subsystem: None

BAAN: Mapping of field value to BAAN field Tdpsc041.pono

Position 7	Field format	out an..35 / in an..16	Field status	M
Field name	Packaging Number Customer			

Description: Describes the number, the customer assigned to the packaging.

Processing outgoing

EDI subsystem: None

BAAN: Mapping of BAAN field Tdssc019.item to position after conversion of item codes to customer item codes.

Processing incoming

EDI subsystem: None

BAAN: Mapping of field value to field tdpsc042.item

Position 8	Field format	out an..35 / in an..25	Field status	M
Field name	Packaging number supplier			

Description: Describes the number, the supplier assigned to the packaging.

Processing outgoing

EDI subsystem: None

BAAN: Mapping of BAAN field Tdssc019.item to position.

Processing incoming

EDI subsystem: None

BAAN: Mapping of field value to field tdpsc042.sitm

Position	9	Field format	n..6	Field status	M
Field name	Number packaging				

Description: Describes the number of used packaging.

Contains a numerical code for the number of packaging. It is displayed in the following format: 'NNNNNN'.

Processing outgoing

EDI subsystem: None

BAAN: None

Processing incoming

EDI subsystem: None

BAAN: Mapping of field value to BAAN field Tdpsc042.puqt.

Position	10	Field format	n..15	Field status	C
Field name	Filling quantity				

Description: Describes the filling quantity of a packaging.

Contains a numerical code for the filling quantity. It is displayed in the following format:
'NNNNNNNNNNNN.NNNN'.

Processing outgoing

EDI subsystem: None

BAAN: Mapping of BAAN field Tdssc019.cqty to position.

Processing incoming

EDI subsystem: None

BAAN: Mapping of field value to BAAN field Tdpsc042.cqty.

Position	11	Field format	an..3	Field status	C
Field name	Unit of shipped quantity				

Description: This field contains the encoded measure of quantity, in which the item is displayed. The coding was carried out on the basis of ODETTE-Standard ODDC 25:

Millimeter MMT
 Centimeter CMT
 Meter MTR
 Kilometer KMT
 Square millimeter MMK
 Square centimeter CMK
 Square meter MTK
 Cubic millimeter MMQ
 Cubic centimeter CMQ
 Cubic meter MTQ
 Liter DMQ
 Gram GRM
 Kilogram KGM

Metric ton TON
 Piece PCE

If you want to transfer additional units of measurement, you need to enter them in the session tcedi2130m000 ‘Maintain units’ for the company **BEM**.

Processing outgoing

EDI subsystem: None

BAAN: Mapping of BAAN field Tdssc018.cuqs to position.

Processing incoming

EDI subsystem: None

BAAN: Mapping of field value to BAAN field Tdpsc042.cuqs.

Position 12	Field format	out n..6 / in an..30	Field status	C
	Field name	Serial Number from		

Description: Describes the first internal serial number (from) of the shipment.

Contains a numerical code with a maximum of 6 digits for the packaging.

Processing outgoing

EDI subsystem: None

BAAN: Mapping of BAAN field Tdssc019.pnof to position.

Processing incoming

EDI subsystem: None

BAAN: Mapping of field value to BAAN field Tdpsc042.pano.

Position 13	Field format	out n..6 / in an..30	Field status	C
	Field name	Serial number to		

Description: Describes the last internal serial number (to) of the shipment.

Contains a numerical code with a maximum of 6 digits for the packaging.

Processing outgoing

EDI subsystem: None

BAAN: Mapping of BAAN field Tdssc019.pnot to position.

Processing incoming

EDI subsystem: None

BAAN: Mapping of field value to BAAN field Tdpsc042.pant

Position 14	Field format	out an..1 / in n..4	Field status	C
Field name	Storage load factor			

Description: This field is reserved for later extensions.

Processing outgoing

EDI subsystem: None

BAAN: This position is not filled at the moment, here (...;““;...).

Processing incoming

EDI subsystem: None

BAAN: Mapping of field value to BAAN field Tdpsc042.stfc.

Position	15	Field format	n..1	Field status	C
Field name	Label Identification				

Description: Barcode identification of the goods label.

Processing outgoing

EDI subsystem: None

BAAN: Mapping of field value to BAAN field Tdssc019.lblc.

BAAN writes 0 = empty
 BAAN writes 1 = means G
 BAAN writes 2 = means S
 BAAN writes 3 = means M

Processing incoming

EDI subsystem: None

BAAN: Mapping of field value to BAAN field Tdpsc042.lblc.

Position	16	Field format	an1	Field status	C
Field name	Packaging identification				

Description: This position is used as an indication whether this packing item can be reused

“1” means Yes

“2” mean No

Processing outgoing

EDI subsystem: None

BAAN: Mapping of BAAN field Tiitm001.onew to position.

Processing incoming

EDI subsystem: None

BAAN: Mapping of field value to BAAN field Tdpsc042.pidn.

Position	17	Field format	an1	Field status	C
Field name	Property identification				

Description: This field is reserved for later extensions.

Processing outgoing

EDI subsystem: None

BAAN: Mapping of field value to BAAN field Tdpsc042.prid..

Processing incoming

EDI subsystem: None

BAAN: None

Position	18	Field format	n1	Field status	C
Field name	Packaging Type				

Description: The package type identifies the way a package or container is used, and whether it is an inner package or outer package.

Main: A package of type main can be used to pack other (smaller) containers or the deliverable item that is defined in the contract. If package levels are used, only one 'Main' package per level is allowed.

Auxiliary: These packages are normally collected by a 'Main' package and are therefore unlimited. Auxiliary packages are items such as spacers, lids and so on.

Processing outgoing

EDI subsystem: None

BAAN: Mapping of BAAN field Tdssc019.ptyp to position.

BAAN writes 1 = means Main

BAAN writes 2 = means Auxiliary

Processing incoming

EDI subsystem: None

BAAN: Mapping of field value to BAAN field Tdpsc042.ptyp.

Position	19	Field format	out n..4 / in an...30	Field status	C
Field name	Parent Packaging Number				

Description:

Processing outgoing

EDI subsystem: None

BAAN: This position is not filled at the moment, here (...;"";...).

Processing incoming

EDI subsystem: None

BAAN: Mapping of field value to BAAN field Tdpsc042.ptyp.

Position	20	Field format	n..9	Field status	C
Field name	Parent Advice Note				

Description:

Processing outgoing

EDI subsystem: None

BAAN: Mapping of BAAN field Tdssc019.pdes to position.

Processing incoming

EDI subsystem: None

BAAN: None

Position	21	Field format	n..9	Field status	C
Field name	Parent Package Number				

Description:

Processing outgoing

EDI subsystem: None

BAAN: Mapping of BAAN field Tdssc019.ppnb to position.

Processing incoming

EDI subsystem: None

BAAN: None

Position	22	Field format	an2	Field status	M
Field name	Qualifier Item Number				

Description: This field contains the qualifier item number which is used to determine the item number from the *Customer's item number* in position 5. This position must be filled with the constant value 'SA' ('SA' = supplier's item number).

Processing outgoing

EDI subsystem: None

BAAN: This field will be filled with the constant value 'SA'.

Processing incoming

EDI subsystem: This field will be filled with the constant value 'SA'.

BAAN: The qualifier must have been entered in the BAAN table TBtcedi232 (Item number IDs). It will be taken into account when the BAAN internal item number is determined from the customer's item number in position 5.

Position	23	Field format	n..8	Field status	C
Field name	Package Level				

Description: The package level identifies the level of a package item in a package hierarchy. The lowest level in the structure is '1' (= inner package), while 'n' represents the highest level (= outer package). If no structures are used, the field package level is set to 1 for all lines.

Processing outgoing

EDI subsystem: None

BAAN: Mapping of BAAN field Tdssc019.plvl to position.

Processing incoming

EDI subsystem: None

BAAN: None

Position	24	Field format	an.12	Field status	C
Field name	Reference				

Description: Reference.

Processing outgoing

EDI subsystem: None

BAAN: Mapping of BAAN field Tdssc019.ican to position.

Processing incoming

EDI subsystem: None

BAAN: None

Position	25	Field format	an..7	Field status	M
Field name	End of Record Sign				

Description: The field identifies the end of the record.

Contents: 'SA5_END'

Processing outgoing

EDI subsystem: None

BAAN: The position is filled with the fixed value 'SA5_END'.

Processing incoming

EDI subsystem: The position is filled with the fixed value 'SA5_END'.

BAAN: None

3 Sample file incoming/outgoing message

```
"SA1";"F8109811120019";"Metall  
Isernhg.";"F810";"LFAVIS";"BEMIS";"4913";"";19981  
112;1123;"";"SA1_END"  
"SA2";"F8109811120019";"Metall  
Isernhg.";100101;"Forwarding Agent";;0;2;;"01";0;  
"";"";"";"";0;"MTQ";"";"SA2_END"  
"SA3";"F8109811120019";"Metall  
Isernhg.";100101;100472;"06011998810";19980902;11  
00;19980930;0;19980930;0;19980930;"TDB3";"01";"";"26";  
"";"";"";"1";0;"";"";0;0;  
0;0;2;"";"Ford add. Plant";"DP";"SA3_END"  
"SA4";"F8109811120019";"Metall  
Isernhg.";100101;100472;10;"810 005 001 - 1000";"  
810 005  
001";"";10;"KGM";"000006";2;"";"00000000000000001";"S";  
"G";"";"";"";"";19  
980930;19980930;"810 005 001 -  
10";"123456";0;"SA4_END"  
"SA5";"F8109811120019";"Metall  
Isernhg.";100101;100472;10;"100";"KLT4316";1;10;"  
KGM";0;0;"";0;2;"";1;0;0;0;"SA";"SA5_END"  
"SA1";"F8109811120020";"Metall  
Isernhg.";"F810";"LFAVIS";"BEMIS";"4913";"";19981  
112;1123;"";"SA1_END"  
"SA2";"F8109811120020";"Metall  
Isernhg.";100102;"Forwarding Agent";19980902;1830  
;4;;"01";0;"";"AS 9844";"";"";0;"MTQ";"";"SA2_END"
```

```
"SA3";"F8109811120020";"Meta11  
Isernhg.";100102;100473;"06011998810";19980902;17  
10;19981002;0;19981002;0;19981002;"TDB3";"01";"";"26";  
"";"";"";"1";0;"";"";0;0;  
0;0;4;"";"Ford add. Plant";"DP";"SA3_END"  
"SA4";"F8109811120020";"Meta11  
Isernhg.";100102;100473;10;"810 005 001 - 1000";"  
810 005  
001";"";20;"KGM";"000006";40;"";"00000000000000001";"S"  
;"G";"";"";"";"";1  
9981002;19981002;"810 005 001 -  
10";"123456";0;"SA4_END"  
"SA5";"F8109811120020";"Meta11  
Isernhg.";100102;100473;10;"100";"KLT4316";2;10;"  
KGM";0;0;"";0;2;"";1;0;0;0;"SA";"SA5_END"
```


4 Glossary of terms and abbreviations

ABRUF	Schedule
Appl	Application
ANSI	American National Standards Organization
BEM	Baan Electronic Message – abbreviated form of BEMIS used with the definition of the EDI organization
BEMIS	Baan Electronic Message Interchange System
Business partner (BP)	Customer or supplier
C	Conditional, that is, optional message
defaults.edi	Export file detailing master EDI data
DELINS	Odette Delivery Instruction (Schedule)
Directory	Folder
EDI	Electronic Data Interchange; electronic exchange of documents in standard formats
EDIFACT	Electronic Data Exchange For Administration, Commerce and Transport. An ISO standard.
ELP	External Logistic partner
evaluation expression	If statement in the conversion setup for outgoing messages
ISO	International Standards Organization
ISO 4217	Code table
M	Mandatory (compulsory) message
MAIS	General Motor's interpretation of the subset of EDIFACT DELJIT Message
Messg	Message
network address	Folder (directory) path on network
ODDC	Odette Code Table
ODDC25	Odette Code Table 25
ODETTE	European standard for electronic data exchange
Org	Organization, that is, system
SCH	Supply Chain
Semaphore	Method to show a status using files with zero length

Glossary of terms and abbreviations

Translation	Conversion of one data format to another, for example Baan in-house data format to ODETTE
VAT	Value Added Tax (tax on turnover; sales tax)
VDA	Standard used for electronic data exchange in Germany
X12	Standard used for electronic data exchange in the United States