

B E M I S

BAAN Electronic Message Interchange System

BAAN IVC3 Definition of BEMIS 1.0.a Import and Export File for the Message Type Trading Orderresponse

Date: 08/03/1999

Author: Jörg Buchholz / Gesine Hilf

Document code: U7255A US

Table of contents

1	INTRODUCTION	3
1.1	TARGET GROUP	3
1.2	STRUCTURE OF THE DOCUMENTATION	3
2	GENERAL PRINCIPLES.....	4
2.1	AVAILABLE KINDS OF DATA RECORDS	4
2.2	BRANCHING DIAGRAMM	4
2.3	KEY FIELDS OUTGOING	5
2.4	KEY FIELDS INCOMING.....	6
2.5	NETWORK DIRECTORIES.....	6
2.6	BEMIS MESSAGES - CONVENTIONS.....	7
3	DATA RECORD DESCRIPTION BY KIND OF DATA RECORD.....	10
3.1	SA1 MESSAGE OVERHEAD.....	10
3.2	SA2 ORDER HEADER	16
3.3	SA3 ORDER TEXT - <i>TEXTDATEN</i>	30
3.4	SA4 ORDER DELIVERY AND INVOICE ADDRESSES.....	35
3.5	SA5 ORDER LINES.....	52
3.6	SA6 DELIVERY ADDRESS PER ORDER LINE	67
4	APPENDIX.....	73
4.1	SAMPLE FILE	73

© Copyright 1997 Baan Solution Center Automotive EMEA, Germany

All rights reserved. No item of this publication may be reproduced and/or published by print, photoprint, microfilm, audiotape, electronically, mechanically or any other means, or stored in an information retrieval system, without prior permission from the copyright owner.

The information in this document is subject to change without notice and should not be considered as a commitment by Baan SCA Europe. No responsibility is assumed for any error which may appear in this document.

1 Introduction

1.1 Target group

This documentation describes in a detailed way the standard inhouse data formats, which the BAAN Electronic Message Interchange System BEMIS requires as interfaces to the respective EDI Sub-System.

The documentation is intended for developers of EDI Sub-Systems, which want to realize an interface of their software to BAAN IV. Furthermore, it supports consultants, who want to implement and verify such an interface within a customer project.

1.2 Structure of the documentation

Chapter 1 gives an overview over the general principles of the relevant EDI message. For example available kinds of data records, message structure, key fields and other conventions.

Chapter 2 describes all corresponding kinds of data records for the EDI message in a detailed way. All data fields are listed in an overview table in connection with the corresponding table fields. In addition, every single field is described in a more detailed way. You will find information about the general conditions, which you need to observe for the processing in the EDI Sub-System or in BAAN IV.

2 General principles

This section describes the BAAN EDI inhouse format for the message type *Orders (incoming/outgoing)*.

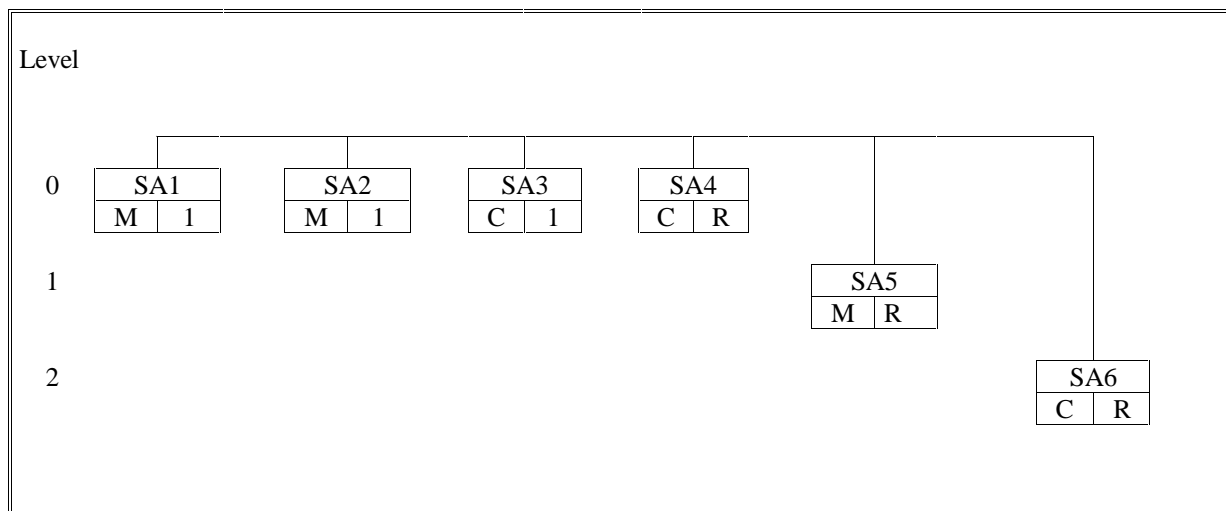
2.1 Available kinds of data records

The use of the following kinds of data records is conditional (C) respectively mandatory (M), when you transmit information about orders.

Id	Status	Name
SA1	M	Overhead
SA2	M	Orderresponse Header
SA3	C	Orderresponse Header Text
SA4	C	Orderresponse Delivery / Invoice Addresses
SA5	M	Orderresponse Line
SA6	C	Orderresponse Line delivery Addresses

2.2 Branching diagramm

The following data record structure is used for the message type BEMIS - Orderresponse:



Legend:

Status: M: mandatory in message
C: conditional in message

Frequency: 1: once by message
R: repeatable by message

For example, for two required orders with each two lines the BEMIS file has the following structure:

SA1 ... BAAN IV Overhead
SA2 ... Orderresponse Header 1
SA3 ... Orderresponse Header 1 Text
SA4 ... Orderresponse Delivery Address Order 1
SA4. ... Orderresponse Invoice Address Order1
SA5 ... Orderresponse Lines Item 1
SA6 ... Orderresponse Line Delivery Address Item 1
SA5.... Orderresponse Line Item 2
SA6 ... Orderresponse Line Delivery Address Item 2
...
SA1 ... BAAN IV Overhead
SA2 ... Orderresponse Header 2
SA3 ... Orderresponse Header 2 Text
SA4 ... Orderresponse Delivery Address Order 2
SA4... Orderresponse Invoice Address Order 2
SA5 ... Orderresponse Lines Item 1
SA6 ... Orderresponse Line Delivery Address Item 1
SA5.... Orderresponse Line Item 2
SA6 ... Orderresponse Line Delivery Address Item 2
...

If a Orderresponse Line Delivery Address (SA6) is used for each item, the Orderresponse Delivery Address on the header (SA4) is ignored in Baan.

2.3 Key fields outgoing

The following structure of the key fields is used to determine the related data records of an order:

Kind of data record	Key field 1	Key field 2	Key field 3	Key field 4
SA1	Message Reference	Network Address		
SA2	Message Reference	Network Address		
SA3	Message Reference	Network Address	Order Number	
SA4	Message Reference	Network Address	Order Number	
SA5	Message Reference	Network Address	Order Number	
SA6	Message Reference	Network Address	Order Number	Order Position Number

2.4 Key fields incoming

The following structure of the key fields is used to determine the related data records of an order message:

Kind of data record	Key field 1	Key field 2	Key field 3	Key field 4
SA1	Message Reference	Customer Network Address		
SA2	Message Reference	Customer Network Address		
SA3	Message Reference	Customer Network Address	Customer Purchase Order Number	
SA4	Message Reference	Customer Network Address	Customer Purchase Order Number	
SA5	Message Reference	Customer Network Address	Customer Purchase Order Number	
SA6	Message Reference	Customer Network Address	Customer Purchase Order Number	Order Position Number

2.5 Network directories

The so-called network directories form the basis of the communication between the EDI Sub-System and BAAN IV. These directories are established in BAAN. The network basis directories for each network will be defined in the BAAN session SETcedi0120m000. For the network BEMIS, the basis directories can be indicated in the following way:

/auto3/baanIV/bemis/ordrsp/

BAAN will additionally create the following subdirectories:

***/auto3/baanIV/bemis/ordrsp/appl_from/
/auto3/baanIV/bemis/ordrsp/appl_to/
/auto3/baanIV/bemis/ordrsp/command/
/auto3/baanIV/bemis/ordrsp/store_rcv/
/auto3/baanIV/bemis/ordrsp/store_sent/
/auto3/baanIV/bemis/ordrsp/trace/***

The above mentioned directories have the following function:

1. ***.../appl_from/***: In this directory, BAAN IV records the outgoing messages which are the defined BEMIS inhouse format files. The EDI Sub-System can collect them from here.
2. ***.../appl_to/***: The EDI Sub-System writes the incoming message into this directory in the BAAN IV inhouse format.
3. ***.../command/***: Directory of the semaphores.
4. ***.../store_rcv/***: BAAN IV stores in this directory processed incoming messages, if the configuration is accordingly. During this process an additional subdirectory by incoming message file will be created which is named with a date and time stamp indicating when the message was moved.
5. ***.../store_sent/***: BAAN IV stores in this directory processed outgoing messages if the configuration is

BEMIS BAAN Electronic Message Interchange System

accordingly. During this process an additional subdirectory by incoming message file will be created which is named with a date and time stamp indicating when the message was moved.

6. **../trace/**: BAAN creates under this directory a log of the incoming and outgoing messages in the processing order, if the configuration is accordingly.

For every message type one network directory will be used for outgoing and one for incoming messages. This means that one message file contains data for several business partners.

The file name of the BEMIS inhouse format file of the order, which is being described in this documentation, is defined in the following way:

Direction	File name	Network directory
outgoing	orderres.out	../appl_from
incoming	orderres.in	../appl_to

2.6 BEMIS Messages - Conventions

The following general rules apply to a message record in a BEMIS message file:

1. Every message record starts with "SAx"
2. Every message record ends with "SAx_END"
3. The length of a data record can vary.
4. The message record must consist of all fields, even if not every field contains a value.
5. The fields in the file must be separated by a ; .
6. A filled string field have to be put in "....".

In the following sections you will find the format descriptions for the individual kinds of data records of the interface file. The table contains the following data:

<i>ORDER INHOUSE FORMAT</i>				
<i>Pos</i>	<i>FIELD DESCRIPTION</i>	<i>Key</i>	<i>ST</i>	<i>FM</i>

The first block of the table describes the format of a kind of data record:

Pos.	Position of the field in the data record
Field description	Description of the field
Key	Key field outgoing (O) / incoming (I)
ST	Field status mandatory (M) / conditional (C)
FM	Field format
	an..14 alphanumerical field with a maximum of 14 characters
	an14 alphanumerical field with exactly 14 characters
	n..10 numerical field with a maximum of 10 characters
	n1 numerical field with exactly 1 character

<i>from Application Table Fields (out) / Mapping to (in)</i>	
<i>Table Field</i>	<i>Action</i>

The second block of the table describes the corresponding table field in BAAN IV as well as possible special actions, which will be carried out during the processing of the messages.

When BAAN generates outgoing messages, the numerical fields are written into the inhouse format file without leading zeros. For example, for the year "0000" a "0" will be written into the BEMIS message file.

BEMIS BAAN Electronic Message Interchange System

Following the table overview, every field is described in a more detailed way, including information about the processing in the EDI Sub-System and in BAAN IV.

In the past, there seemed to be some doubts about the way BAAN points out a position within the message file. Here are some additional explanations:

As defined in BEMIS a position within a message file is pointed out using two semikolons.

To draw an example: "SAX";...;Position;...;"SAX_END"

If an position in a BEMIS Message File is not taken by a value (this means the position is empty), the position is pointed out as shown above. Moreover the BAAN EDI Module distinguishes between numerical and alphanumerical data format. If a position defined as numerical is empty the position is pointed out using semikolons. On the other hand empty alphanumerical positions are exported in two way. The first way is to point out a position using the semikolons. The second way BAAN exports empty alphanumerical positions is to write two inverted commans within the position. This depends whether the alphanumerical field existis in BAAN's database or not. Finally we take a look at the following expample:

empty numerical Position:

```
"SAX";...;;...;"SAX_END"
```

empty alphanumerical Position:

```
"SAX";...;;...;"SAX_END"
```

or

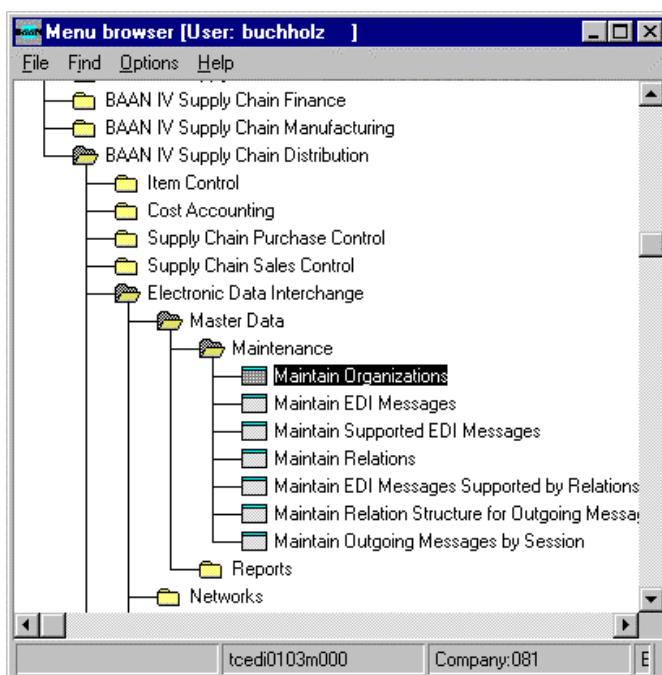
```
"SAX";...;"";...;"SAX_END"
```

2.7 Changing The Date Format

For the BAAN Versions b and c we have defined a date format using up to 6 numerical digits. Reading this definition, you will find out that the date format has been changed to 8 digits at maximum. With the BAAN Version BAAN IVC4 the delivered BEMIS default file the defaults.edi will be different in this point (in comparison to the versions delivered before). In BAAN EDI there is one global Parameter in order to send out date information including the two digits for the century.

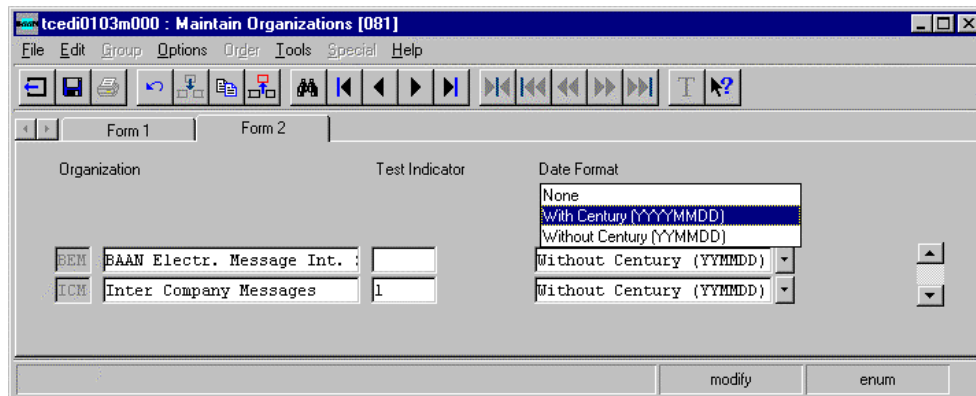
The enclosed screen shots will show you where you will find the responsible parameter.

You have to choose the following menu option:



After you called the session tcedi0103m000 you will see that the entry for the dateformat on form two has been changed to "With Century (YYYYMMDD).

BEMIS BAAN Electronic Message Interchange System



Organization	Test Indicator	Date Format
BEM BAAN Electr. Message Int. :		Without Century (YYMMDD)
ICM Inter Company Messages	1	Without Century (YYMMDD)

Please notice: If you use this option above the date format of every exported message will be changed to 8 digits! This means that the partner system (the translator software) has to be able to translate each outgoing message coming with the changed date format!

3 Data record description by kind of data record

3.1 SA1 MESSAGE OVERHEAD

Status: Mandatory
 Frequency: Once by order
 Description: This data record contains information about the transmitter, the message type and the time of the transmission. The message reference identifies all related data records of this message.

<i>ORDER ACKNOWLEDGEMENT INHOUSE FORMAT</i>					<i>Mapping from Application Table Fields (out)</i>		<i>Mapping to Application Fields (in)</i>	
<i>Pos</i>	<i>FIELD DESCRIPTION</i>	<i>Key</i>	<i>ST</i>	<i>FM</i>	<i>Table Field</i>	<i>Action</i>	<i>Table Field</i>	<i>Action</i>
1.	Kind of data record	O/I	M	an3	SA1		SA1	
2.	Message reference	O/I	M	an..14	tcedi701.bano	Generation (see below)	tcedi702.bano	Generation by EDI Sub-System
3.	Network address customer / supplier		M	an..17	tcedi028.neta	Conversion (see below)	tcedi702.reno	Conversion (see below)
4.	Our identification in the network		M	an..17	tcedi020.neta	Conversion (see below)		
5.	Message		M	an..6	tcedi001.code	Conversion (see below)	tcedi702.mess	Conversion (see below)
6.	Organization		M	an..6	tcedi003.code	Conversion (see below)	tcedi702.orga	Conversion (see below)
7.	Order type		M	an..35	tcedi011.koor	Conversion (see below)	tcedi702.koor	Conversion (see below)
8.	Transmission reference		M	an..20	0		tcedi702.msno	
9.	Date of transmission		M	n..6	current date		tcedi702.send	
10.	Time of transmission		M	n..4	current time		tcedi702.sent	
11.	Transmission reference old		M	an..20	0		tcedi702.prno	
12.	Data record end sign		M	an7	SA1_END		SA1_END	

Detailed description:	Order
Kind of data record:	SA1 Overhead

Position	1	Field format	an3	Field status	M
Field name		Kind of data record		(Key field out/in)	

Description: This field identifies the kind of data record in the message block. It contains the constant value 'SA1'.

Processing outgoing

EDI Sub-System:

BAAN:

This field will be filled with the constant value 'SA1'.

Processing incoming

EDI Sub-System:

BAAN:

This field will be filled with the constant value 'SA1'.

None

Position	2	Field format	an..14	Field status	M
Field name		Message reference		(Key field out/in)	

Description: This field identifies all connected data records of one orderresponse. The numbering, which has to be clear by order, helps to control the chronological order of the orders and the complete transmission. The field consists of a fix item with four characters, the current date (format: YYMMDD) and a serial number with four characters.

The special format will be defined in the network parameters in the BAAN table TBtcedi020. When generating the message reference with the EDI Sub-System, the created message reference needs to be specific, that means unique. While storing the message reference BAAN controls whether it is specific.

Processing outgoing

EDI Sub-System:

BAAN:

BAAN generates this number to identify an order, stores it in the BAAN table field TFtcedi701.bano and writes it into all data records of an orderresponse.

Processing incoming

EDI Sub-System:

BAAN:

The EDI Sub-System generates this number to identify an orderresponse and writes it into all data records of an orderresponse.

Mapping to BAAN table field TFtcedi702.bano.

Position	3	Field format	an..17	Field status	M
Field name	Network address customer / supplier			(Key field out/in)	

Description: This field contains on the outgoing side the network address of the supplier and on the incoming side the network address of the customer.

Processing outgoing

EDI Sub-System: Transmission of the value from the message file.
 BAAN: The network address is stored in the BAAN table TBtcedi028 'Relations by network' under the corresponding business partner (supplier) and the corresponding network in the BAAN table field TFtcedi028.neta. The contents of this field is mapped to the position of the transmission file. Here you can store the general ILN-Number for your customer.

Processing incoming

EDI Sub-System:
 BAAN: The network address determines the corresponding business partner (customer) and the network in the table TBtcedi028 'Relations by network'. This identification is mapped to the BAAN table field TFtcedi702.reno.

Position	4	Field format	an..17	Field status	M
Field name	Our identification in the network				

Description: This field contains on the outgoing side our identification (customer) in the network.

Processing outgoing

EDI Sub-System:
 BAAN: The department or employee coded in the used network is entered in the table TBtcedi020 'Networks'. The BAAN table field TFtcedi028.neta is mapped to this position. Here you can enter the ILN Number to identify yourself with your ILN Number.

Processing incoming

EDI Sub-System: Transmission of the value from the message file.
 BAAN: On the incoming side this field will be ignored.

Position	5	Field format	an..6	Field status	M
Field name	Message				

Description: This field contains the code for the identification of the concerned message. The code for the message type 'Orderresponse' is ORDERA.

Processing outgoing

EDI Sub-System:

BAAN: The internal message code tcedi001.code 'ORDERA' of the BAAN table TBtcedi001 'Supported EDI messages' is mapped to this position.

Processing incoming

EDI Sub-System:

BAAN: This field will be filled with the constant value 'ORDERA'. The message code in the table TBtcedi001 'Supported EDI Messages' determines, which internal message in BAAN is connected to this order. In the BAAN table TBtcedi005 'EDI Messages' is determined for every message which session (DII) is used in BAAN to process the order. The message code is mapped to the BAAN table field TFtcedi702.mess.

Position	6	Field format	an..6	Field status	M
Field name	Organization				

Description: This field contains the organization (Standard), which is used for the EDI communication.

Processing outgoing

EDI Sub-System:

BAAN: The internal organisation code tcedi003.code 'BEMIS' from the BAAN table TBtcedi003 'Organizations' is mapped to this position.

Processing incoming

EDI Sub-System:

BAAN: This field will be filled with the constant value 'BEMIS'. Mapping to BAAN table field TFtcedi702.orga. The corresponding organization must have been entered into the BAAN table TBtcedi003.

Position	7	Field format	an..35	Field status	M
Field name		Order type			

Description: This field contains a code for the concerned order type.

Processing outgoing

EDI Sub-System:

BAAN:

In the BAAN table TBtcedi011 there must be an entry for this order type in connection with the respective message and organization. The BAAN table field TFtcedi011.koor is mapped to this position. This field is filled with the EDIFACT orderresponse types. For example "318" for a normal orderresponse. The inhouse order type is converted in TBtcedi432.

Processing incoming

EDI Sub-System:

BAAN:

Mapping to BAAN table field TFtcedi702.koor.

In the BAAN table TBtcedi200 there must be an entry for this order type in connection with the respective message and organization.

Position	8	Field format	an..20	Field status	M
Field name		Transmission Reference			

Description: This field contains the reference code which the EDI Sub-System applied to this transmission.

Processing outgoing

EDI Sub-System:

BAAN:

Processing incoming

EDI Sub-System:

BAAN:

Transmission of the value from the transmission file.

Mapping to BAAN table field TFtcedi702.msno. This field should contain the supplier sales order number.

Position	9	Field format	n..8	Field status	M
Field name		Date of transmission			

Description: This field contains on the outgoing side the current date, on which the order message was created. On the incoming side, this field contains the arrival date of the order at the EDI Sub-System (format: YYYYMMDD).

Processing outgoing

EDI Sub-System:

BAAN:

Mapping of the current date to the position.

Processing incoming

EDI Sub-System:

BAAN:

Entry of the arrival date of the message at the EDI Sub-System.

Mapping to BAAN table field TFtcedi702.send

Position	10	Field format	n..4	Field status	M
Field name		Time of transmission			

Description: This field contains on the outgoing side the time, when the order message was created. On the incoming side, the field contains the arrival time of the order at the EDI Sub-System (format: HHMM).

Processing outgoing

EDI Sub-System:
BAAN: Mapping of the current time to the position

Processing incoming

EDI Sub-System: Entry of the arrival time of the message at the EDI Sub-System.
BAAN: Mapping to BAAN table field TFtcedi702.send.

Position	11	Field format	an..20	Field status	C
Field name		Transmission reference old			

Description: This field contains the reference number, which the EDI Sub-System applied to the previous transmission.

Processing outgoing

EDI Sub-System: Entry of the reference code for the previous transmission into transmission file.
BAAN: The position will be filled with 0 .

Processing incoming

EDI Sub-System: Transmission of the value from the transmission file.
BAAN: Mapping to BAAN table field TFtcedi702.prho

Position	12	Field format	an7	Field status	M
Field name		Data record end sign			

Description: This field indicates the end of the data record. It contains the constant value 'SA1_END'.

Processing outgoing

EDI Sub-System:
BAAN: This field will be filled with the constant value 'SA1_END'.

Processing incoming

EDI Sub-System: This field will be filled with the constant value 'SA1_END'.
BAAN: None

BEMIS BAAN Electronic Message Interchange System
3.2 SA2 ORDERRESPONSE HEADER

Status : Mandatory
 Frequency: Once by order number
 Description: This data record contains all information of the orderresponse header except of address and text data and is related to SA1.

<i>ORDER ACKNOWLEDGEMENT INHOUSE FORMAT</i>					<i>Mapping from Application Table Fields (out)</i>		<i>Mapping to Application Fields (in)</i>	
<i>Pos</i>	<i>FIELD DESCRIPTION</i>	<i>Key</i>	<i>ST</i>	<i>FM</i>	<i>Table Field</i>	<i>Action</i>	<i>Table Field</i>	<i>Action</i>
1.	Kind of data record	O/I	M	an3	SA2		SA2	
2.	Message reference	O/I	M	an..14	tcedi701.bano		tcedi702.bano	
3.	Network address customer /supplier	O/I	M	an..17	tcedi028.neta		tcedi702.reno	Conversion (see below)
4.	Customer Order Number	O/I	M	an..30 n..6	tdsls040.eono		tdpur040.orno	
5.	Contract Number		C	n..6	tdsls040.prno		tdpur040.prno	
6.	Order Number Supplier		C	n..6	tdsls040.orno		tdpur040.refa	
7.	Order Date		C	n..6	tdsls040.odat			
8.	Planned Delivery Date		C	n..6	tdsls040.ddat			
9.	Term of Delivery		C	an..6	tdsls040.cdec	Code and Conversion	tdpur040.cdec	Code and Conversion
10.	Terms of Payment		C	an..6	tdsls040.cpay	Code and Conversion	tdpur040.cpay	Code and Conversion
11.	Order Discount		C	n..6	tdsls040.odis	NNN.NN	tdpur040.odis	NNN.NN
12.	Currency		C	an..3	tdsls040.ccur	Code and Conversion	tdpur040.ccur	Code and Conversion
13.	Late Payment Surcharge		C	n..3	tdsls040.ccrs	NNN	tdpur040.ccrs	
14.	Forwarding Agent		C	an..20	tdsls040.cfrw	Code and Conversion	tdpur040.cfrw	Code and Conversion
15.	Reference A		C	an..20	tdsls040.refa			
16.	Reference B		C	an..20	tdsls040.refb		tdpur040.refb	
17.	Qualifier Address Code 1		M	an2	“DP”			
18.	Qualifier Address Code 2		M	an2	“ZZ”			
19.	Qualifier Address Code 3		M	an2	“IP”			
20.	Qualifier Address Code 4		M	an2	“IZ”			
21.	Payment Period		C	n..5	tcmcs013.pper			
22.	Payment Discount Period 1		C	n..5	tcmcs013.disa			
23.	Payment Discount Percentage 1		C	n..5	tcmcs013.prea			
24.	Delivery Address coded		C	an..20	tdsls040.cdel	Code and Conversion		
25.	Invoice Address coded		C	an..20	tdsls040.coor	Code and Conversion		

<i>ORDER ACKNOWLEDGEMENT INHOUSE FORMAT</i>					<i>Mapping from Application Table Fields (out)</i>		<i>Mapping to Application Fields (in)</i>	
<i>Pos</i>	<i>FIELD DESCRIPTION</i>	<i>Key</i>	<i>ST</i>	<i>FM</i>	<i>Table Field</i>	<i>Action</i>	<i>Table Field</i>	<i>Action</i>
26.	Country Code		C	an..2	tdsls040.ccty	Code and Conversion		
27.	Price list		C	an..3	tdsls040.cpls			
28.	Region		C	an..3	tdsls040.creg			
29.	Line of Business		C	n..6	tdsls040.cbrn			
30.	Planned receipt date		C	n..8	tdsls040.prdt		tdpur040.ddtc	
31.	Payment Discount Period 2		C	n..5	tcmcs013.disb			
32.	Payment Discount Percentage 2		C	n..5	tcmcs013.prcb			
33.	Payment Discount Period 3		C	n..5	tcmcs013.disc			
34.	Payment Discount Percentage 3		C	n..5	tcmcs013.prec			
35.	Data record end sign		M	an7	SA2_END		SA2_END	

Detailed description:	Order
Kind of data record:	SA2 Orderresponse Header

Position	1	Field format	an3	Field status	M
Field name		Kind of data record		(Key field out/in)	

Description: This field identifies the kind of data record in the message block. It contains the constant value 'SA2'.

Processing outgoing

EDI Sub-System:
BAAN: This field will be filled with the constant value 'SA2'.

Processing incoming

EDI Sub-System:
BAAN: This field will be filled with the constant value 'SA2'.

Position	2	Field format	an..14	Field status	M
Field name		Message reference		(Key field out/in)	

Description: This field identifies all connected data records of one orderresponse. The numbering of the message reference, which has to be clear by Orderresponse, helps to control the chronological order of the Orderresponses and the complete transmission.

Processing outgoing

EDI Sub-System:
BAAN: Refer to data record SA1.

Processing incoming

EDI Sub-System:
BAAN: Refer to data record SA1

Position	3	Field format	an..17	Field status	M
Field name		Networkadress Customer/Supplier		(Key field out)	

Description: This field contains the identification code of the supplier on the customer side (incoming) and the customer on the supplier side (outgoing)..

Processing outgoing

EDI Sub-System:
BAAN: Refer to data record SA1

Processing incoming

EDI Sub-System:
BAAN: Refer to data record SA1

BAAN: Refer to data record SA1.

Position	4	Field format	out an..30 / in n..6	Field status	M
Field name		Order Number		(Key field in/out)	

Description: This field contains the order number.

Processing outgoing

EDI Sub-System: None.

BAAN: The purchase order number of the customer is mapped from BAAN table field TFtdsls040.eono to this position.

Processing incoming

EDI Sub-System: Transmission of the value from the message file.

BAAN: Mapping to BAAN table field TFtdpur040.orno

Position	5	Field format	n..6	Field status	C
Field name		Contract Number			

Description: This field contains the Contract Number which is defined with the customer/supplier.

Processing outgoing

EDI Sub-System: None

BAAN: The sales contract number is mapped from BAAN table TBtdsls040.prno to this position.

Processing incoming

EDI Sub-System: Transmission of the value from the message file.

BAAN: Mapping to the BAAN table field TFtdpur040.prno

Position	6	Field format	out n..6 / in an..20	Field status	M
Field name		Order Number		(Key field in/out)	

Description: This field contains the order number.

Processing outgoing

EDI Sub-System: None.

BAAN: The sales order number of the supplier is mapped from BAAN table field TFtdsls040.orno to this position.

Processing incoming

EDI Sub-System: Transmission of the value from the message file.

BAAN: Mapping to BAAN table field TFtdpur040.refa

Position	7	Field format	n..8	Field status	C
Field name	Order Date				

Description: This field contains the date (YYYYMMDD) the order is entered in the system.

Processing outgoing

EDI Sub-System: None.

BAAN: The order date from BAAN table field TFtdsls040.odat is mapped to this position.

Processing incoming

EDI Sub-System: Transmission of the value from the message file.

BAAN: Mapping to BAAN table field TFtdpur040.odat

Position	8	Field format	n..8	Field status	C
Field name	Planned Delivery Date				

Description: This field contains the date (YYYYMMDD) on which the delivery will take place.

Processing outgoing

EDI Sub-System: None.

BAAN: The sales order delivery date from BAAN table field TFtdsls040.ddat is mapped to this position.

Processing incoming

EDI Sub-System:

BAAN: Not used.

Position	9	Field format	an..6	Field status	C
Field name	Term of Delivery				

Description: This field contains a code for the Term of Delivery. This field indicates how to frank the shipment (unfranked,...) It contains a unique alphanumerical identification.

- 01 = unfranked (unfrei)
- 02 = free destination (frei Bestimmungsort)
- 03 = free to the door (frei Haus)
- 04 = free German border (frei deutsche Grenze)
- 05 = free receiving carrier (frei Empfängsspediteur)
- 99 = special postage (Sonderfrankatur)

Processing outgoing

EDI Sub-System: None.

BAAN: The Term of Delivery of the sales order from BAAN table field TFtdsls040.cdec is mapped to this position. If other definitions are used in BAAN, the BAAN table TBtcedi430 is used for conversion.

Processing incoming

EDI Sub-System: Transmission of the value from the message file.

BAAN: Mapping to the BAAN table field TFtdpur040.cdec and Conversion via BAAN

table TBtcedi300.

Position	10	Field format	an..6	Field status	C
Field name	Terms of Payment				

Description: This field contains a Code for the Terms of Payment agreed upon with the relation.

Processing outgoing

EDI Sub-System:

BAAN: The Terms of Delivery of the sales order from BAAN table field TFtdsls040.cpay is mapped to this position and converted using the table TBtcedi466.

Processing incoming

EDI Sub-System:

BAAN: Transmission of the value from the message file.
Mapping to the BAAN table field TFtdpur040.cpay and conversion via BAAN table TBtcedi326

Position	11	Field format	n..6	Field status	C
Field name	Order Discount				

Description: This field contains the Order Discount related to the complete order amount.
NNN.NN. Maximum is 100.00

Processing outgoing

EDI Sub-System:

BAAN: The Order Discount of the sales order from BAAN table field TFtdsls040.odis is mapped to this position.

Processing incoming

EDI Sub-System:

BAAN: Transmission of the value from the message file.
Mapping to the BAAN table field TFtdpur040.odis

Position	12	Field format	an..6	Field status	C
Field name	Currency				

Description: This field contains the Currency relevant for the order. It contains the clear alphanumerical identification of the invoice. The currency code will be defined according to ISO 4217, e.g. ,280' for German mark (DM).

Processing outgoing

EDI Sub-System:

BAAN: The Currency relevant for the sales order from BAAN table field TFtdsls040.ccur is mapped to this position and converted using table TBtcedi324.

Processing incoming

EDI Sub-System:

BAAN: Transmission of the value from the message file.
Mapping to the BAAN table field TFtdpur040.ccur and conversion with BAAN table TBtcedi438.

Position	13	Field format	n..3	Field status	C
Field name	Late Payment Surcharge				

Description: This field contains the Late Payment Surcharge.

Processing outgoing

EDI Sub-System:

BAAN: The Late Payment Surcharge of the sales order from BAAN table field TFtdsls040.ccrs is mapped to this position. A conversion has to be done with BAAN table TBtcedi470.

Processing incoming

EDI Sub-System:

BAAN: Transmission of the value from the message file. Mapping to the BAAN table field TFtdpur040.ccrs and conversion with BAAN table TBtcedi330.

Position	14	Field format	an..20	Field status	C
Field name	Forwarding Agent				

Description: This field contains the Code of the Forwarding Agent used for this order. The code list has to be agreed with the partner.

Processing outgoing

EDI Sub-System:

BAAN: The Code for the Forwarding Agent of the sales order from BAAN table field TFtdsls040.cfrw is mapped to this position. and converted with BAAN table TBtcedi456

Processing incoming

EDI Sub-System:

BAAN: Transmission of the value from the message file. Mapping to the BAAN table field TFtdpur040.cfrw and conversion with BAAN table TBtcedi318.

Position	16	Field format	an..30	Field status	C
Field name	Reference A				

Description: This field contains a reference. You can use this field to give further information to your customer.

Processing outgoing

EDI Sub-System:

BAAN: The Reference A of the sales order from BAAN table field TFtdsls040.refa is mapped to this position.

Processing incoming

EDI Sub-System:

BAAN:

Position	16	Field format	an..20	Field status	C
Field name	Reference B				

Description: This field contains a second reference field for further information defined with the relation.

Processing outgoing

EDI Sub-System:

BAAN: The Reference B of the sales order from BAAN table field TFtdsls040.refb is mapped to this position.

Processing incoming

EDI Sub-System:

BAAN: Transmission of the value from the message file.

BAAN: Mapping to the BAAN table field TFtdpur040.refb

Position	17	Field format	an2	Field status	M
Field name	Qualifier Address Code 1				

Description: This field contains the first Qualifier for the Delivery Address Code.

Processing outgoing

EDI Sub-System:

BAAN: The field is filled with the constant value "DP".

Processing incoming

EDI Sub-System:

BAAN:

Position	18	Field format	an2	Field status	M
Field name	Qualifier Address Code 2				

Description: This field contains the second Qualifier for the Delivery Address Code. "ZZ" means, that the used Address Codes are mutual defined with the relation.

Processing outgoing

EDI Sub-System:

BAAN: The field is filled with the constant value "ZZ".

Processing incoming

EDI Sub-System:

BAAN:

Position	19	Field format	an2	Field status	M
Field name	Qualifier Address Code 3				

Description: This field contains the third Qualifier for the Invoice Address Code. "IP" means, that the used Address Codes are mutual defined with the relation.

Processing outgoing

EDI Sub-System:

BAAN: The field is filled with the constant value "IP".

Processing incoming

EDI Sub-System:

BAAN:

Position	20	Field format	an2	Field status	M
Field name		Qualifier Address Code 4			

Description: This field contains the third Qualifier for the Invoice Address Code. "IZ" means, that the used Adress Codes are mutual defined with the relation.

Processing outgoing

EDI Sub-System:

BAAN: The field is filled with the constant value "IZ".

Processing incoming

EDI Sub-System:

BAAN:

Position	21	Field format	n..5	Field status	C
Field name		Payment Period			

Description: This field contains the Payment Period.

Processing outgoing

EDI Sub-System:

BAAN: The payment period is mapped from BAAN table field TFtcmcs013.pper to this position.

Processing incoming

EDI Sub-System:

BAAN: Not used.

Position	22	Field format	n..5	Field status	C
Field name		Discount Period 1			

Description: This field contains the Discount Period 1.

Processing outgoing

EDI Sub-System:

BAAN: The first discount period is mapped from BAAN table field TFtcmcs013.disa to this position.

Processing incoming

EDI Sub-System:

BAAN: None.

Position	23	Field format	n..5	Field status	C
Field name		Discount Percentage 1			

Description: This field contains the Discount Percentage 1.

Processing outgoing

EDI Sub-System:

BAAN: The first discount percentage is mapped from BAAN table field TFtcmcs013.prca to this position.

Processing incoming

EDI Sub-System:

BAAN: None.

Position	24	Field format	an..20	Field status	C
Field name		Delivery Address Code			

Description: This field contains a Code for the Delivery Adresse. This can be used instead of a concret address, if the codes are mutual defined with the supplier/customer. Also the ILN-Number can be used.

Processing outgoing

EDI Sub-System:

BAAN: The delivery address code of the sales order from BAAN table field TFtdsls040.cdel is mapped to this position and converted with BAAN table TBtcedi462.

Processing incoming

EDI Sub-System:

BAAN:

Position	25	Field format	an..20	Field status	C
Field name		Invoice Address Code			

Description: This field contains a Code for the Invoice Adresse. This can be used instead of a concret address, if the codes are mutual defined with the supplier/customer.

Processing outgoing

EDI Sub-System:

BAAN: The delivery address code of the sales order from BAAN table field TFtdsls040.coor is mapped to this position and converted with BAAN table TBtcedi462.

Processing incoming

EDI Sub-System:
BAAN:

Position	26	Field format	an..3	Field status	C
Field name		Country Code			

Description: This field contains the Country of the Address. The following country codes are defined in BAAN table TBtcedi226 according to ODDC 6

- AT: Austria
- BE: Belgium
- CH: Switzerland
- DE: Federal Republik of Germany
- DK: Denmark
- ES: Spain
- FI: Finland
- FR: France
- GB: United Kingdom
- GR: Greece
- IE: Ireland
- IT: Italy
- LU: Luxembourg
- NL: Netherlands
- NO: Norway
- PT: Portugal
- SE: Sweden
- TR: Turkey
- YU: Yugoslavia

Processing outgoing

EDI Sub-System:
BAAN: The country code related to the order from BAAN table field TFtdsls040.ccty is mapped to this position and convertes with BAAN table TBtcedi440.

Processing incoming

EDI Sub-System:
BAAN:

Position	27	Field format	an..3	Field status	C
Field name		Price List			

Description: This field contains the purchase/sales price list The Code must be mutual defined with the customer/supplier. A conversion is not possible.

Processing outgoing

EDI Sub-System:
BAAN: The Code of the used sales price list of the order from BAAN table field TFtdsls040.cplp is mapped to this position.

Processing incoming

EDI Sub-System:
BAAN:

Position	28	Field format	an..3	Field status	C
Field name		Region			

Description: This field contains the Region the customer/supplier belongs to. The Code must be mutual defined with the customer/supplier. A conversion is not possible.

Processing outgoing

EDI Sub-System:
BAAN: The code of the region of the purchase order from BAAN table field TFtdsls040.creg is mapped to this position.

Processing incoming

EDI Sub-System:
BAAN:

Position	29	Field format	n..6	Field status	C
Field name		Line of Business			

Description: This field contains the Code for the Line of Business the customer/supplier belongs to. The Code must be mutual defined with the customer/supplier. A conversion is not possible.

Processing outgoing

EDI Sub-System:
BAAN: The code of the region of the purchase order from BAAN table field TFtdsls040.cbrn is mapped to this position.

Processing incoming

EDI Sub-System:
BAAN:

Position	30	Field format	n..8	Field status	C
Field name		Planned Receipt Date			

Description: This field contains the date (YYYYMMDD) the delivery is planned to be receipt by the customer.

Processing outgoing

EDI Sub-System:
BAAN: The planned receipt date of the sales order is mapped from BAAN table field TFtdsls040.prdt to this position.

Processing incoming

EDI Sub-System: Transmission of the value from the message file.
 BAAN: Mapping to the BAAN table field TFtdpur040.ddtc

Position	31	Field format	n..5	Field status	C
Field name		Discount Period 2			

Description: This field contains the Discount Period 2.

Processing outgoing

EDI Sub-System:

BAAN: The second discount period is mapped from BAAN table field TFfcmcs013.dish to this position.

Processing incoming

EDI Sub-System:

BAAN: None.

Position	32	Field format	n..5	Field status	C
Field name		Discount Percentage 2			

Description: This field contains the Discount Percentage 2.

Processing outgoing

EDI Sub-System:

BAAN: The second discount percentage is mapped from BAAN table field TFfcmcs013.prcb to this position.

Processing incoming

EDI Sub-System:

BAAN: None.

Position	33	Field format	n..5	Field status	C
Field name		Discount Period 3			

Description: This field contains the Discount Period 3.

Processing outgoing

EDI Sub-System:

BAAN: The first discount period is mapped from BAAN table field TFfcmcs013.disc to this position.

Processing incoming

EDI Sub-System:

BAAN: None.

Position	34	Field format	n..5	Field status	C
Field name	Discount Percentage 3				

Description: This field contains the Discount Percentage 3.

Processing outgoing

EDI Sub-System:

BAAN: The third discount percentage is mapped from BAAN table field TFtcmcs013.prc to this position.

Processing incoming

EDI Sub-System:

BAAN: None.

Position	35	Field format	an7	Field status	M
Field name	Data record end sign				

Description: This field indicates the end of the data record. It contains the constant value 'SA2_END'.

Processing outgoing

EDI Sub-System:

BAAN: This field will be filled with the constant value 'SA2_END'.

Processing incoming

EDI Sub-System:

BAAN: This field will be filled with the constant value 'SA2_END'.

BAAN: None

3.3 SA3 ORDERRESPONSE TEXT - TEXTDATEN

Status : Conditional
 Frequency : Once by order number
 Description: This data record contains the text information of the orderresponse header and is related to SA2.

<i>SCHEDULE (LAB) INHOUSE FORMAT</i>					<i>Mapping from Application Table Fields (out)</i>		<i>Mapping to Application Fields (In)</i>	
<i>Pos</i>	<i>FIELD DESCRIPTION</i>	<i>Key</i>	<i>ST</i>	<i>FM</i>	<i>Table Field</i>	<i>Action</i>	<i>Table Field</i>	<i>Action</i>
1.	Kind of data record	O/I	M	an3	SA3		SA3	
2.	Message reference	O/I	M	an..14	tcedi701.bano			
3.	Network address customer/supplier	O/I	M	an..17	tcedi028.neta			
4.	Customer Order Number	O/I	M	an..30	tdsls040.eono			
5.	Free text 1		M	an..70	tdsls040.txta			
6.	Free text 2		C	an..70	tdsls040.txta			
7.	Free text 3		C	an..70	tdsls040.txta			
8.	Free text 4		C	an..70	tdsls040.txta			
9.	Free text 5		C	an..70	tdsls040.txta			
10.	Data record end sign		M	an7	SA3_END			

Detailed Description:	Order
Kind of data record:	SA3 Orderresponse text

Position	1	Field format	an3	Field status	M
Field name		Kind of data record		(Key field out/in)	

Description: This field identifies the kind of data record in the message block. It contains the constant value 'SA3'.

Processing outgoing

EDI Sub-System:

BAAN: This field will be filled with the constant value 'SA3'.

Processing incoming

EDI Sub-System:

BAAN: This field will be filled with the constant value 'SA3'.

BAAN: None

Position	2	Field format	an..14	Field status	M
Field name		Message reference		(Key field out/in)	

Description: This field identifies all connected data records of one Order. The numbering of the message reference, which has to be clear by Order, helps to control the chronological order of the Orders and the complete transmission.

Processing outgoing

EDI Sub-System:

BAAN: Refer to data record SA2.

Processing incoming

EDI Sub-System:

BAAN: Refer to data record SA2.

BAAN: Refer to data record SA2.

Position	3	Field format	an..17	Field status	M
Field name		Networkadress Customer/Supplier		(Key field out/in)	

Description: This field contains the identification which the customer applied to the supplier.

Processing outgoing

EDI Sub-System:

BAAN: Refer to data record SA2.

BAAN: Refer to data record SA2.

BEMIS BAAN Electronic Message Interchange System

Processing incoming

EDI Sub-System: Refer to data record SA2.
BAAN: Refer to data record SA2.

Position	4	Field format	out an..30	Field status	M
Field name		Order Number		(Key field in/out)	

Description: This field contains the order number.

Processing outgoing

EDI Sub-System:
BAAN: Refer to data record SA2.

Processing incoming

EDI Sub-System:
BAAN:

Position	5	Field format	an..70	Field status	C
Field name		Free text 1			

Description: This field contains a free text with a maximum of 70 characters.

Processing outgoing

EDI Sub-System:
BAAN: Mapping of BAAN table field TFtdsls040.txta to position.

Processing incoming

EDI Sub-System:
BAAN:

Position	6	Field format	an..70	Field status	C
Field name		Free text 2			

Description: This field contains a free text with a maximum of 70 characters.

Processing outgoing

EDI Sub-System:
BAAN: Mapping of BAAN table field TFtdsls040.txta to position.

Processing incoming

EDI Sub-System:
BAAN:

BEMIS BAAN Electronic Message Interchange System

Position	7	Field format	an..70	Field status	C
Field name			Free text 3		

Description: This field contains a free text with a maximum of 70 characters.

Processing outgoing

EDI Sub-System:

BAAN: Mapping of BAAN table field TFtdsls040.txta to position.

Processing incoming

EDI Sub-System:

BAAN:

Position	8	Field format	an..70	Field status	C
Field name			Free text 4		

Description: This field contains a free text with a maximum of 70 characters.

Processing outgoing

EDI Sub-System:

BAAN: Mapping of BAAN table field TFtdsls040.txta to position.

Processing incoming

EDI Sub-System:

BAAN:

Position	9	Field format	an..70	Field status	C
Field name			Free text 5		

Description: This field contains a free text with a maximum of 70 characters.

Processing outgoing

EDI Sub-System:

BAAN: Mapping of BAAN table field TFtdsls040.txta to position.

Processing incoming

EDI Sub-System:

BAAN:

BEMIS BAAN Electronic Message Interchange System

Position	10	Field format	an7	Field status	M
Field name	Data record end sign				

Description: This field indicates the end of the data record. It contains the constant value 'SA3_END'.

Processing outgoing

EDI Sub-System:

BAAN: This field will be filled with the constant value 'SA3_END'.

Processing incoming

EDI Sub-System:

BAAN:

3.4 SA4 Order Delivery and Invoice Addresses

Status : Conditional
 Frequency : Twice at maximum by order number
 Description: This data record contains the Delivery and the Invoice Addresses of the order header and is related to SA2.

First Appearance: InvoiceAddress (Address Qualifier: 1)

ORDER ACKNOWLEDGEMENT INHOUSE FORMAT					Mapping from Application Table Fields		Mapping to Application Fields	
Pos	FIELD DESCRIPTION	Key	ST	FM	Table Field	Action	Table Field	Action
1.	Kind of data record	O/I	M	an3	SA4		SA4	
2.	Message reference	O/I	M	an..14	tcedi701.bano			
3.	Network address customer /supplier	O/I	M	an..17	tcedi028.neta			
4.	Customer Order Number	O/I	M	an..30	tdsls040.eono			
5.	Address Qualifier		M	an1	“1“			
6.	Invoice Address Country		C	an..6	tccom012.ccty tdsls042.ccty tccom010.ccty	SCP SSP SDP Code and Conversion		
7.	Invoice Address first part of the name		C	an..35	tccom012.nama tdsls042.nama tccom010.nama	SCP SSP SDP		
8.	Invoice Address second part of the name		C	an..30	tccom012.namb tdsls042.namb tccom010.namb	SCP SSP SDP		
9.	Invoice Address		C	an..30	tccom012.namc tdsls042.namc tccom010.namc	SCP SSP SDP		
10.	Invoice Address 2		C	an..30	tccom012.namd tdsls042.namd tccom010.namd	SCP SSP SDP		
11.	Invoice Address City		C	an..30	tccom012.name tdsls042.name tccom010.name	SCP SSP SDP		

BEMIS BAAN Electronic Message Interchange System
SA4 Orderresponse Addresses

12.	Invoice Address. further information for city e.g. province/country		C	an..30	tccom012.namf tdsls042.namf tccom010.namf	SCP SSP SDP		
13.	Invoice Address Zip Code		C	an..10	tccom012.pstc tdsls042.pstc tccom010.pstc	SCP SSP SDP		
14.	Tax Number		C	an..20	tccom012.fovn tdsls042..fovn tccom010.fovn	SCP SSP SDP		
15.	Data record end sign		M	an7	SA4_END		SA4_END	

Evaluation Expression : SCP: strip(tdsls040.ccor) <> ""
Evaluation Expression : SSP: (tdsls042.orno <> 0) and (tdsls042.ckor = 1)
Evaluation Expression : SDP: (strip(tdsls040.ccor) = "") and (tdsls042.orno = 0)

Second Appearance: Delivery Address (Address Qualifier: 0)

ORDER ACKNOWLEDGEMENT INHOUSE FORMAT					Mapping from Application Table Fields		Mapping to Application Fields	
Pos	FIELD DESCRIPTION	Key	ST	FM	Table Field	Action	Table Field	Action
1.	Kind of data record	O/I	M	an3	SA4			
2.	Message reference	O/I	M	an..14	tcedi701.bano			
3.	Network address customer /supplier	O/I	M	an..17	tcedi028.neta			
4.	Customer Order Number	O/I	M	an..30	tdsls040.eono			
5.	Address Qualifier		M	an1	“0“			
6.	Delivery Address: Country Code of the Country where the company is established			an..6	tccom013.ccty tdsls042.ccty tccom010.ccty	SCD SSD SDD Code and Conversion		
7.	Delivery Address: Company's Name			an..35	tccom013.nama tdsls042.nama tccom010.nama	SCD SSD SDD		
8.	Delivery Address: second part of the Company Name			an..30	tccom013.namb tdsls042.namb tccom010.namb	SCD SSD SDD		
9.	Delivery Address: First Part of the Company Address			an..30	tccom013.namc tdsls042.namc tccom010.namc	SCD SSD SDD		
10.	Delivery Address: Second Part of the Company Address			an..30	tccom013.namd tdsls042.namd tccom010.namd	SCD SSD SDD		
11.	Delivery Address: City where the company is established			an..30	tccom013.name tdsls042.name tccom010.name	SCD SSD SDD		
12.	Delivery Address: Second part of the name of the City where the company is established			an..30	tccom013.namf tdsls042.namf tccom010.namf	SCD SSD SDD		
13.	Delivery Address: Zip Code				tccom013.pstc tdsls042.pstc tccom010.pstc	SCD SSD SDD		
14.	Tax ID				tccom013.fovn tdsls042.fovn tccom010.fovn	SCD SSD SDD		

BEMIS BAAN Electronic Message Interchange System
SA4 Orderresponse Addresses

15.	Data record end sign		M	an7	SA4_END		
-----	----------------------	--	---	-----	---------	--	--

Evaluation Expression : SCD: strip(tdsls040.cdel) <> ""
Evaluation Expression : SSD: (tdsls042.orno <> 0) and (tdsls042.ckor = 0)
Evaluation Expression : SDD: (strip(tdsls040.cdel) = "") and (tdsls042.orno =0)

Detailed description:	Orderresponse Delivery and Invoice Addresses
Kind of data record:	SA4 Orderresponse Delivery and Invoice Addresses

First Appearance: Invoice Address (Address Qualifier: 1)

Position	1	Field format	an3	Field status	M
Field name		Kind of data record		(Key field out/in)	

Description: This field identifies the kind of data record in the message block. It contains the constant value 'SA4'.

Processing outgoing

EDI Sub-System:

BAAN: This field will be filled with the constant value 'SA4'.

Processing incoming

EDI Sub-System:

BAAN: This field will be filled with the constant value 'SA4'.

Position	2	Field format	an..14	Field status	M
Field name		Message reference		(Key field out/in)	

Description: This field identifies all connected data records of one order. The numbering of the message reference, which has to be clear by Order, helps to control the chronological order of the Orders and the complete transmission.

Processing outgoing

EDI Sub-System:

BAAN: Refer to data record SA2.

Processing incoming

EDI Sub-System:

BAAN: Refer to data record SA2

Position	3	Field format	an..17	Field status	M
Field name		Networkadres Supplier/Customer		(Key field out)	

Description: This field contains the identification code of the supplier on the customer side.

Processing outgoing

EDI Sub-System:

BAAN: Refer to data record SA2

Description:

Processing incoming

EDI Sub-System:

BAAN:

Position	4	Field format	out an..30	Field status	M
Field name			Order Number		(Key field in/out)

Description: This field contains the order number.

Processing outgoing

EDI Sub-System:

BAAN: Refer to data record SA2.

Processing incoming

EDI Sub-System:

BAAN:

Position	5	Field format	an1	Field status	M
Field name			Address Qualifier Invoice Address		

Description: This field contains the Qualifier which identifies the next data set as an invoice or an delivery address.
 0 The following data is the delivery address
 1 The following data is the invoice address
 This qualifier must be entered in BAAN table TBtcedi224 regarding to the used organisation.

Processing outgoing

EDI Sub-System:

BAAN: The value "1" is filled in from BAAN table field tcedi224.code.

Processing incoming

EDI Sub-System:

BAAN:

Position	6	Field format	an..6	Field status	C
Field name			Invoice Address Country		

Description: This field contains the Country of the Address. The following country codes are defined in BAAN table TBtcedi226 according to ODDC 6
 AT: Austria
 BE: Belgium
 CH: Switzerland
 DE: Federal Republik of Germany
 DK: Denmark
 ES: Spain
 FI: Finland
 FR: France

GB: United Kingdom
 GR: Greece
 IE: Ireland
 IT: Italy
 LU: Luxembourg
 NL: Netherlands
 NO: Norway
 PT: Portugal
 SE: Sweden
 TR: Turkey
 YU: Yugoslavia

Processing outgoing

EDI Sub-System:

BAAN: The country code of the invoice adress from BAAN table field TFtdsls042.ccty, tccom012.ccty or tccom010.ccty is mapped to this position and convertes with BAAN table TBtcedi440.

Processing incoming

EDI Sub-System:

BAAN:

Position	7	Field format	an..35	Field status	C
Field name	Invoice Address First part of Name				

Description: This field contains the first part of the name.

Processing outgoing

EDI Sub-System:

BAAN: The First part of the Name from BAAN table field TFtdsls042.nama, tccom010.nama or tccom010.nama is mapped to this position.

Processing incoming

EDI Sub-System:

BAAN:

Position	8	Field format	an..30	Field status	C
Field name	Invoice Address Second part of Name				

Description: This field contains the second part of the name.

Processing outgoing

EDI Sub-System:

BAAN: The Second part of the Name from BAAN table field TFtdsls042.namb, tccom012.namb or tccom010.namb is mapped to this position.

Processing incoming

EDI Sub-System:

BAAN:

Position	9	Field format	an..30	Field status	C
Field name	Invoice Address				

Description: This field contains the first part of the Invoice Address.

Processing outgoing

EDI Sub-System:

BAAN: The first part of the Address from BAAN table field TFtdsls042.namc, tccom012.namc or tccom010.namc is mapped to this position.

Processing incoming

EDI Sub-System:

BAAN:

Position	10	Field format	an..30	Field status	C
Field name	Invoice Address 2				

Description: This field contains the second part of the invoice address.

Processing outgoing

EDI Sub-System:

BAAN: The second part of the Invoice Address from BAAN table field TFtdsls042.namd, tccom012.namd or tccom010.namd is mapped to this position.

Processing incoming

EDI Sub-System:

BAAN:

Position	11	Field format	an..30	Field status	C
Field name	Invoice Address City				

Description: This field contains the name of the City.

Processing outgoing

EDI Sub-System:

BAAN: The name of the City from BAAN table field TFtdsls042.name, tccom012.name or tccom010.name is mapped to this position.

Processing incoming

EDI Sub-System:

BAAN:

Position	12	Field format	an..30	Field status	C
Field name	ILN Code / Invoice Address for further information province or country				

Description: This field contains further information to the City (province/country)

Processing outgoing

EDI Sub-System:
BAAN: The ILN-Code BAAN table field TFtdsls042.namf, tccom012.namf or tccom010.namf is mapped to this position or.

Processing incoming

EDI Sub-System:
BAAN:

Position	13	Field format	an..10	Field status	C
Field name	Invoice Address Zip Code				

Description: This field contains the postal or zip Code referring to the Invoice Address.

Processing outgoing

EDI Sub-System:
BAAN: The Zip Code from BAAN table field TFtdsls042.pstc, tccom012.pstc or tccom010.pstc is mapped to this position.

Processing incoming

EDI Sub-System:
BAAN:

Position	14	Field format	an..20	Field status	C
Field name	Tax ID				

Description: This field contains the Tax ID. Outgoing it is my own Tax ID, Incoming the Tax ID of the customer.

Processing outgoing

EDI Sub-System:
BAAN: The Tax-ID from BAAN table field TFtdsls042.fovn, tccom012.fovn or tccom010.fovn is mapped to this position.

Processing incoming

EDI Sub-System:
BAAN:

Position	16	Field format	an7	Field status	M
Field name	Data record end sign				

Description: This field indicates the end of the data record. It contains the constant value 'SA4_END'.

Processing outgoing

EDI Sub-System:

BAAN:

This field will be filled with the constant value 'SA4_END'.

Processing incoming

EDI Sub-System:

BAAN:

Second Appearance: Delivery Address (Address Qualifier: 0)

Position	1	Field format	an3	Field status	M
Field name			Kind of data record		(Key field out/in)

Description: This field identifies the kind of data record in the message block. It contains the constant value 'SA4'.

Processing outgoing

EDI Sub-System:

BAAN: This field will be filled with the constant value 'SA4'.

Processing incoming

EDI Sub-System:

BAAN: This field will be filled with the constant value 'SA4'.

Position	2	Field format	an..14	Field status	M
Field name			Message reference		(Key field out/in)

Description: This field identifies all connected data records of one order. The numbering of the message reference, which has to be clear by Order, helps to control the chronological order of the Orders and the complete transmission.

Processing outgoing

EDI Sub-System:

BAAN: Refer to data record SA2.

Processing incoming

EDI Sub-System:

BAAN: Refer to data record SA2

Position	3	Field format	an..17	Field status	M
Field name			Networkaddress Customer/Supplier		(Key field out)

Description: This field contains the identification code of the supplier on the customer side.

Processing outgoing

EDI Sub-System:

BAAN: Refer to data record SA2

Processing incoming

EDI Sub-System:
BAAN:

Position	4	Field format	out an..30	Field status	M
Field name			Order Number		(Key field in/out)

Description: This field contains the order number.

Processing outgoing

EDI Sub-System:
BAAN: Refer to data record SA2

Processing incoming

EDI Sub-System:
BAAN:

Position	5	Field format	an1	Field status	M
Field name			Address Qualifier Delivery Address		

Description: This field contains the Qualifier which identifies the next data set as an invoice or an delivery address.
 0 The following data is the delivery address
 1 The following data is my own invoice address
 This qualifier must be entered in BAAN table TBtcedi224 regarding to the used organisation.

Processing outgoing

EDI Sub-System:
BAAN: The value "0" is filled in.

Processing incoming

EDI Sub-System:
BAAN:

Position	6	Field format	an..6	Field status	C
Field name			Delivery Address Country		

Description: This field contains the Country of the Address. The following country codes are defined in BAAN table TBtcedi226 according to ODDC 6
 AT: Austria
 BE: Belgium
 CH: Switzerland
 DE: Federal Republik of Germany
 DK: Denmark
 ES: Spain
 FI: Finland
 FR: France
 GB: United Kingdom
 GR: Greece

IE: Ireland
 IT: Italy
 LU: Luxembourg
 NL: Netherlands
 NO: Norway
 PT: Portugal
 SE: Sweden
 TR: Turkey
 YU: Yugoslavia

Processing outgoing

EDI Sub-System:

BAAN: The country code of the delivery address from BAAN table field TFtccom013.ccty, tdsls042.ccty or tccom010.ccty is mapped to this position and convertes with BAAN table TBtcedi440.

Processing incoming

EDI Sub-System:

BAAN:

Position	7	Field format	an..35	Field status	C
Field name	Delivery Address First part of Name				

Description: This field contains the first part of the name.

Processing outgoing

EDI Sub-System:

BAAN: The First part of the Name from BAAN table field TFtccom013.nama, tdsls042.nama or tccom010.nama is mapped to this position.

Processing incoming

EDI Sub-System:

BAAN:

Position	8	Field format	an..30	Field status	C
Field name	Delivery Address Second part of Name				

Description: This field contains the second part of the name.

Processing outgoing

EDI Sub-System:

BAAN: The Second part of the Name from BAAN table field TFtccom013.namb, tdsls042.namb or tccom010.namb is mapped to this position.

Processing incoming

EDI Sub-System:

BAAN:

BEMIS BAAN Electronic Message Interchange System
SA4 Orderresponse Addresses

Position	9	Field format	an..30	Field status	C
Field name	Delivery Address				

Description: This field contains the first part of the Delivery Address.

Processing outgoing

EDI Sub-System:

BAAN: The first part of the Delivery Address from BAAN table field TFtccom013.name, tdsls042.name or tccom010.name is mapped to this position.

Processing incoming

EDI Sub-System:

BAAN:

Position	10	Field format	an..30	Field status	C
Field name	Delivery Address 2				

Description: This field contains the second part of the Delivery Address.

Processing outgoing

EDI Sub-System:

BAAN: The second part of the Delivery Address from BAAN table field TFtccom013.name, tdsls042.name or tccom010.name is mapped to this position.

Processing incoming

EDI Sub-System:

BAAN:

Position	11	Field format	an..30	Field status	C
Field name	Delivery Address City				

Description: This field contains the name of the City.

Processing outgoing

EDI Sub-System:

BAAN: The name of the City from BAAN table field TFtccom013.name, tdsls042.name or tccom010.name is mapped to this position.

Processing incoming

EDI Sub-System:

BAAN:

Position	12	Field format	an..30	Field status	C
Field name	Delivery Address for further information province or country				

Description: This field contains further information to the City (province/country)
The ILN-Number can be used.

Processing outgoing

EDI Sub-System:

BAAN: The second part of the City information from BAAN table field TFtccom013.namf, tdsls042.namf or tccom010.namf is mapped to this position.

Processing incoming

EDI Sub-System:

BAAN:

Position	13	Field format	an..10	Field status	C
Field name	Delivery Address Zip Code				

Description: This field contains the postal or zip Code referring to the Delivery Address.

Processing outgoing

EDI Sub-System:

BAAN: The Zip Code from BAAN table field TFtccom013.pstc, tdsls042.pstc or tccom010.pstc is mapped to this position.

Processing incoming

EDI Sub-System:

BAAN:

Position	14	Field format	an..20	Field status	C
Field name	Tax ID				

Description: This field contains the Tax ID.

Processing outgoing

EDI Sub-System:

BAAN: The Tax ID (Delivery Address) from BAAN table field TFtccom013.fovn, tdsls042.fovn or tccom010.fovn is mapped to this position .

Processing incoming

EDI Sub-System:

BAAN:

Position	17	Field format	an7	Field status	M
Field name	Data record end sign				

Description: This field indicates the end of the data record. It contains the constant value 'SA4_END'.

Processing outgoing

EDI Sub-System:

BAAN: This field will be filled with the constant value 'SA4_END'.

Processing incoming

EDI Sub-System:

BAAN:

3.5 SA5 Orderresponse Lines

Status : Mandatory
 Frequency : multiple times per order number
 Description: This data records contain the information about the ordered items. It is related to SA2.

<i>ORDER ACKNOWLEDGEMENT INHOUSE FORMAT</i>					<i>Mapping from Application Table Fields (out)</i>		<i>Mapping to Application Fields (in)</i>	
<i>Pos</i>	<i>FIELD DESCRIPTION</i>	<i>Key</i>	<i>ST</i>	<i>FM</i>	<i>Table Field</i>	<i>Action</i>	<i>Table Field</i>	<i>Action</i>
1.	Kind of data record	O/I	M	an3	SA5		SA5	
2.	Message reference	O/I	M	an..14	tcedi701.bano		tcedi702.bano	
3.	Network address customer/supplier	O/I	M	an..17	tcedi028.neta		tcedi702.reno	Conversion (see below)
4.	Customer Order Number	O/I	M	an..30 n..6	tdsls040.eono		tdpur040.orno	
5.	Customer Order Position Number		M	an..16 n..5	tdsls041.epos		tdpur041.pono	
6.	Buyer's Item Code		C	an..16	tdsls041.item	Conversion	tdpur041.item	Conversion
7.	Supplier's Item Code		C	an..16	tdsls041.item			
8.	Qualifier Item Code		M	an2	SA		SA	
9.	Description of the Item		C	an..30	tiitem001.dsca			
10.	Item's price		C	n..15	tdsls041.pric		tdpur041.pric	
11.	Sales / Purchase Unit		C	an..3	tdsls041.cuqs		tdpur041.cuqp	
12.	Sale / Purchase Price Unit		C	an..3	tdsls041.cups		tdpur041.cupp	
13.	Ordered Quantity		C	n..15	tdsls041.oqua		tdpur041.oqua	
14.	Planned Delivery Date		C	n..8	tdsls041.ddta			
15.	Tax Code		C	an..5	tdsls041.cvat	Code and Conversion	tdpur041.cvat	Code and Conversion
16.	Country Code linked to the Tax Code		C	an..3	tdsls041.ccty	Code and Conversion	tdpur041.ccty	Code and Conversion
17.	Length of the Item		C	n..15	tdsls041.leng			
18.	Width of the Item		C	n..15	tdsls041.widt			
19.	Height or Thickness of the Item		C	n..15	tdsls041.thic			
20.	Back Order		C	n..15	tdsls041.bqua			
21.	Discount Percentage 1		C	n..6	tdsls045.disc(1)		tdpur041.disc(1)	Code- and Conversion
22.	Order Line Discount Amount 1		C	n..15	tdsls045.damt(1)		tdpur041.ldam(1)	
23.	Discount Percentage 2		C	n..6	tdsls045.disc(2)		tdpur041.disc(2)	Code- and Conversion
24.	Order Line Discount Amount 2		C	n..15	tdsls045.damt(2)		tdpur041.ldam(2)	
25.	Discount Percentage 3		C	n..6	tdsls045.disc(3)		tdpur041.disc(3)	

BEMIS BAAN Electronic Message Interchange System
SA5 Orderresponse Lines

26.	Order Line Discount Amount 3		C	n..15	tdsls045.damt(3)		tdpur041.ldam(3)	
27.	Line Discount		C	n..6	tdsls045.ldam			
28.	Order Line Text 1		C	an..70	tdsls041.txta(1)		tdpur041.txta(1)	
29.	Order Line Text 2		C	an..70	tdsls041.txta(2)		tdpur041.txta(2)	
30.	Qualifier Tax Code Id		C	an3	”VAT”		”VAT”	
31.	Order date		C	n..8	tdsls041.odat		tdpur041.odat	
32.	Planned Receipt date		C	n..8	tdsls041.prdt		tdpur041.ddtc	
33.	Order Line Number Supplier		C	n..4	tdsls041.pono			
34.	Line Amount		C	n..15	tdsls041.amta		tdpur041.amta	
35.	Data record end sign		M	an7	SA5_END		SA5_END	

Detailed description:	Orderresponse Lines
Kind of data record:	SA5 Orderresponse Lines

Position	1	Field format	an3	Field status	M
Field name		Kind of data record		(Key field out/in)	

Description: This field identifies the kind of data record in the message block. It contains the constant value 'SA5'.

Processing outgoing

EDI Sub-System:
BAAN: This field will be filled with the constant value 'SA5'.

Processing incoming

EDI Sub-System:
BAAN: This field will be filled with the constant value 'SA5'.

Position	2	Field format	an..14	Field status	M
Field name		Message reference		(Key field out/in)	

Description: This field identifies all connected data records of one order. The numbering of the message reference, which has to be clear by Order, helps to control the chronological order of the Orders and the complete transmission.

Processing outgoing

EDI Sub-System:
BAAN: Refer to data record SA2.

Processing incoming

EDI Sub-System:
BAAN: Refer to data record SA2

Position	3	Field format	an..17	Field status	M
Field name		Network Address Customer/Supplier		(Key field out)	

Description: This field contains the identification code of the supplier on the customer side (outgoing) and the customer on the supplier side (incomming)

Processing outgoing

EDI Sub-System:
BAAN: Refer to data record SA2

Processing incoming

EDI Sub-System: Refer to data record SA2
 BAAN: Refer to data record SA2

Position	4	Field format	in n..6 /out an..30	Field status	M
Field name			Order Number		(Key field in/out)

Description: This field contains the order number.

Processing outgoing

EDI Sub-System:
 BAAN: Refer to data record SA2

Processing incoming

EDI Sub-System:
 BAAN: Refer to data record SA2

Position	5	Field format	in n..5/ out an..16	Field status	M
Field name			Order Position Number		

Description: This field contains the Customer Order Position Number.

Processing outgoing

EDI Sub-System:
 BAAN: The order line number of the lines of the customer purchase order from BAAN table field TFtdsls041.epos is mapped to this position.

Processing incoming

EDI Sub-System:
 BAAN: Transmission of the value from the message file.
 Mapping to BAAN table field TFtdpur041.pono

Position	6	Field format	an..16	Field status	C
Field name			Buyer's Item Code / EAN Item Code		

Description: This field contains the Byer's Item Code.

Processing outgoing

EDI Sub-System:
 BAAN: The item code from BAAN table field TFtdsls04.item is mapped to this position. If the supplier wants to send out the EAN Item Code a conversion is needed. This means that the suppliers item code has to convert using the code an conversion table TBtcedi444. Furthermore please notice, that the conversion setup has to be adapted to this demand under the use of the qualifier "SA".

Processing incoming

EDI Sub-System: Transmission of the value from the message file.
 BAAN: Mapping to the BAAN table field TFtdpur041.item after conversion with qualifer "SA". If no conversion should take place, the Qualifier on position 8 must be empty.

Position	7	Field format	an..16	Field status	C
Field name		Supplierer`s item code			

Description: This field contains the Supplier item Code.

Processing outgoing

EDI Sub-System:
 BAAN: The supplier item code from BAAN table field TFtdsls041.item is mapped to this position.

Processing incoming

EDI Sub-System:
 BAAN:

Position	8	Field format	an2	Field status	C
Field name		Qualifier Item Code			

Description: This field contains the qualifier for the item code. The constant value 'SA' indicates, that the supplier item codes are used.

Processing outgoing

EDI Sub-System:
 BAAN: This field will be filled with the qualifier, if a conversion is used.

Processing incoming

EDI Sub-System: This field will be filled with the constant value 'SA', if the supplier item code of position 6 is used.
 BAAN: Used as qualifier for the conversion of the item code.

Position	9	Field format	an..30	Field status	C
Field name		Description of the item			

Description: This field contains the description of the item.

Processing outgoing

EDI Sub-System:
 BAAN: The description of the item from BAAN table field TFtiitm001.dsca is mapped to this position.

Processing incoming

EDI Sub-System:
 BAAN:

Position	10	Field format	n..15	Field status	C
Field name			Price		

Description: This field contains the price of the item.
Format: NNNNNNNNNNN.NNNN

Processing outgoing

EDI Sub-System:
BAAN: The price from BAAN table field TFtdsls041.pric is mapped to this position.

Processing incoming

EDI Sub-System:
BAAN: Transmission of the value from the message file.
Mapping to the BAAN table field TFtdpur041.pric

Position	11	Field format	an..3	Field status	C
Field name			Purchase/Sales Unit		

Description: This field contains the purchase/sales unit of the item. The coding was carried out on the basis of ODETTE-Standard ODDC 25:

Millimeter	MMT
Centimeter	CMT
Meter	MTR
Kilometer	KMT
Square millimeter	MMK
Square centimeter	CMK
Square meter	MTK
Cubic millimeter	MMQ
Cubic centimeter	CMQ
Cubic meter	MTQ
Liter	DMQ
Gram	GRM
Kilogram	KGM
Metric ton	TON
Piece	PCE

If you want to transfer additional units of measurement, you need to enter them in the session SETcedi2130m000 'Maintain units' for the company **BEM**.

Processing outgoing

EDI Sub-System:
BAAN: The sales unit from BAAN table field TFtdsls041.cuqs is mapped to this position and converted with BAAN table TBtcedi402.

Processing incoming

EDI Sub-System:
BAAN: Transmission of the value from the message file.
Mapping to the BAAN table field TFtdpur041.cuqp and conversion with BAAN table TBtcedi304.

Position	12	Field format	an..6	Field status	C
Field name	Purchase/Sales Price Unit				

Description: This field contains purchase/sales unit the price refers to. The coding was carried out on the basis of ODETTE-Standard ODDC 25:

Millimeter	MMT
Centimeter	CMT
Meter	MTR
Kilometer	KMT
Square millimeter	MMK
Square centimeter	CMK
Square meter	MTK
Cubic millimeter	MMQ
Cubic centimeter	CMQ
Cubic meter	MTQ
Liter	DMQ
Gram	GRM
Kilogram	KGM
Metric ton	TON
Piece	PCE

If you want to transfer additional units of measurement, you need to enter them in the session SETcedi2130m000 'Maintain units' for the company **BEM**.

Processing outgoing

EDI Sub-System:

BAAN: The sales price unit from BAAN table field TFtdsls041.cups is mapped to this position and converted with BAAN table TBtcedi442.

Processing incoming

EDI Sub-System:

Transmission of the value from the message file.

BAAN: Mapping to the BAAN table field TFtdpur041.cupp and conversion with BAAN table TBtcedi304 is possible.

Position	13	Field format	n..15	Field status	C
Field name	Ordered Quantity				

Description: This field contains the quantity ordered on this order line.
Format: NNNNNNNNNNN.NNNN

Processing outgoing

EDI Sub-System:

BAAN: The ordered quantity from BAAN table field TFtdsls041.oqua is mapped to this position.

Processing incoming

EDI Sub-System:

Transmission of the value from the message file.

BAAN: Mapping to the BAAN table field TFtdpur041.oqua

Position	14	Field format	n..8	Field status	C
Field name	Planned Delivery Date				

Description: This field contains the date on which the delivery is planned or the customer wants to be delivered.

Processing outgoing

EDI Sub-System:

BAAN: The planned delivery date from BAAN table field TFtdsls041.ddta is mapped to this position.

Processing incoming

EDI Sub-System:

BAAN:

Position	16	Field format	an..5	Field status	C
Field name		Tax Code			

Description: This field contains the tax code. The conversion is done using the BAAN table TBtcedi242 is filled.

Processing outgoing

EDI Sub-System:

BAAN: The tax code from BAAN table field TFtdsls041.cvat is mapped to this position and converted with BAAN table TBtcedi446.

Processing incoming

EDI Sub-System:

BAAN: Transmission of the value from the message file.

BAAN: Mapping to the BAAN table field TFtdpur041.cvat

Position	17	Field format	an..6	Field status	C
Field name		Country Code linked to tax code			

Description: This field contains the Country Code which is linked to the tax code according to ODDC 6.

AT: Austria
 BE: Belgium
 CH: Switzerland
 DE: Federal Republik of Germany
 DK: Denmark
 ES: Spain
 FI: Finland
 FR: France
 GB: United Kingdom
 GR: Greece
 IE: Ireland
 IT: Italy
 LU: Luxembourg
 NL: Netherlands
 NO: Norway
 PT: Portugal
 SE: Sweden
 TR: Turkey
 YU: Yugoslavia

Processing outgoing

EDI Sub-System:

BAAN: The country code from BAAN table field TFtdsls041ccty is mapped to this position and converted with BAAN table TBtcedi440.

Processing incoming

EDI Sub-System:

BAAN: Transmission of the value from the message file.

Mapping to the BAAN table field TFtdpur041.ccty

Position	17	Field format	n..15	Field status	C
Field name		Length			

Description: This field contains the length of the item based on an agreed physical unit.
Format: NNNNNNNNNN.NN

Processing outgoing

EDI Sub-System:

BAAN: The length from BAAN table field TFtdsls041.leng is mapped to this position .

Processing incoming

EDI Sub-System:

BAAN:

Position	18	Field format	n..15	Field status	C
Field name		Width			

Description: This field contains the width of the item based on an agreed physical unit.
Format: NNNNNNNNNN.NN

Processing outgoing

EDI Sub-System:

BAAN: The width from BAAN table field TFtdsls041.widt is mapped to this position .

Processing incoming

EDI Sub-System:

BAAN:

Position	19	Field format	n..15	Field status	C
Field name			Higth		

Description: This field contains the hight or thickness of the item based on an agreed physical unit..
 Format: NNNNNNNNNN.NN

Processing outgoing

EDI Sub-System:
 BAAN: The hight from BAAN table field TFtdsls041.thic is mapped to this position .

Processing incoming

EDI Sub-System:
 BAAN:

Position	20	Field format	an3	Field status	C
Field name			Back Order		

Description: The quantity yet to be delivered by the supplier is registered as back order.
 Format: NNNNNNNNNN.NNNN

Processing outgoing

EDI Sub-System:
 BAAN: The back order quantity from BAAN table field TFtdsls041.bqua is mapped to this position .

Processing incoming

EDI Sub-System:
 BAAN:

Position	21	Field format	n..6	Field status	C
Field name			Discount Percentage 1		

Description: This field contains the Discount Percentage for the first discount.

Processing outgoing

EDI Sub-System:
 BAAN: The first discount percentage from BAAN table field TFtdsls045.disc is mapped to this position.

Processing incoming

EDI Sub-System:
 BAAN: Transmission of the value from the message file.
 Mapping to the BAAN table field TFtdpur041.disc (1).

Position	22	Field format	n..15	Field status	C
Field name	Order Line Discount Amount 1				

Description: This field contains the Amount of the Order Line Discount.
Format: NNNNNNNNNNN.NNNN

Processing outgoing

EDI Sub-System:
BAAN: The amount of the first discount from BAAN table field TFtdsls045.damt(1) is mapped to this position.

Processing incoming

EDI Sub-System:
BAAN: Transmission of the value from the message file.
Mapping to the BAAN table field TFtdpur041.ldam (1)

Position	23	Field format	n..6	Field status	C
Field name	Discount Percentage 2				

Description: This field contains the Discount Percentage for the second discount.

Processing outgoing

EDI Sub-System:
BAAN: The second discount percentage from BAAN table field TFtdsls045.disc(2) is mapped to this position.

Processing incoming

EDI Sub-System:
BAAN: Transmission of the value from the message file.
Mapping to the BAAN table field TFtdpur041.cdis (2).

Position	24	Field format	n..15	Field status	C
Field name	Order Line Discount Amount 2				

Description: This field contains the Amount of the Order Line Discount.
Format: NNNNNNNNNNN.NNNN

Processing outgoing

EDI Sub-System:
BAAN: The amount of the second discount from BAAN table field TFtdsls045.damt(2) is mapped to this position.

Processing incoming

EDI Sub-System:
BAAN: Transmission of the value from the message file.
Mapping to the BAAN table field TFtdpur041.ldam (2)

Position	25	Field format	n..6	Field status	C
Field name	Discount Percentage 3				

Description: This field contains the third discount percentage.

Processing outgoing

EDI Sub-System:
BAAN: The third discount percentage from BAAN table field TFtdsls045.disc(3) is mapped to this position.

Processing incoming

EDI Sub-System:
BAAN: Transmission of the value from the message file.
Mapping to the BAAN table field TFtdpur041.cdis (3).

Position	26	Field format	n..15	Field status	C
Field name	Order Line Discount Amount 3				

Description: This field contains the Amount of the Order Line Discount.
Format: NNNNNNNNNNN.NNNN

Processing outgoing

EDI Sub-System:
BAAN: The amount of the third discount from BAAN table field TFtdsls045.damt(3) is mapped to this position.

Processing incoming

EDI Sub-System:
BAAN: Transmission of the value from the message file.
Mapping to the BAAN table field TFtdpur041.ldam (3)

Position	27	Field format	n..15	Field status	C
Field name	Order Line Discount				

Description: This field contains the Amount of the Order Line Discount.
Format: NNNNNNNNNNN.NNNN

Processing outgoing

EDI Sub-System:
BAAN: The amount of the total order line discount from BAAN table field TFtdsls45.ldam is mapped to this position.

Processing incoming

EDI Sub-System:
BAAN:

Position	28	Field format	an..70	Field status	C
Field name	Order Line Text 1				

Description: This field contains the first part of the order line text.

Processing outgoing

EDI Sub-System:

BAAN: The first part of the order line text from BAAN table field TFtdsls041.txta(1) is mapped to this position.

Processing incoming

EDI Sub-System:

BAAN: Transmission of the value from the message file.
Mapping to the BAAN table field TFtdpur041.txta (1)

Position	29	Field format	an..70	Field status	C
Field name		Order Line Text 2			

Description: This field contains the second part of the order line text.

Processing outgoing

EDI Sub-System:

BAAN: The second part of the order line text from BAAN table field TFtdsls041.txta(2) is mapped to this position .

Processing incoming

EDI Sub-System:

BAAN: Transmission of the value from the message file.
Mapping to the BAAN table field TFtdpur041.txta (2)

Position	30	Field format	an3	Field status	C
Field name		Qualifier Tax Code ID			

Description: This field contains the Qualifier for the Tax Code ID on position 15.
This tax code must be filled in BAAN table TBtcedi240 to allow a conversion.

Processing outgoing

EDI Sub-System:

BAAN: The field is filled with the constant value "VAT".

Processing incoming

EDI Sub-System:

BAAN: The field is filled with the constant value "VAT".

BAAN: None.

Position	31	Field format	n..8	Field status	C
Field name		Order Date			

Description: The order date of the order line is the date on which the order line was entered into the system. (YYYYMMDD)

Processing outgoing

EDI Sub-System:

BAAN: The order date of the sales order line from BAAN table field TFtdsls041.odat is mapped to this position.

Processing incoming

EDI Sub-System:

BAAN: Transmission of the value from the message file.

Mapping to the BAAN table field TFtdpur041.odat

Position	32	Field format	n..8	Field status	C
Field name		Planned Receipt Date			

Description: This field contains the planned receipt date.
Format: YYYYMMDD.

Processing outgoing

EDI Sub-System:

BAAN: The Planned Receipt Date from BAAN table field TFtdsls041.prdt is mapped to this position.

Processing incoming

EDI Sub-System:

BAAN: Transmission of the value from the message file.

Mapping to the BAAN table field TFtdpur041.ddtc

Position	33	Field format	n..6	Field status	C
Field name		Order Line Number Supplier			

Description: This field contains the order line number of the supplier.

Processing outgoing

EDI Sub-System:

BAAN: The order line number of the supplier from BAAN table field TFtdsls041.pono is mapped to this position.

Processing incoming

EDI Sub-System:

BAAN:

Position	34	Field format	n..15	Field status	C
Field name		Order Line Amount			

Description: This field contains the Order Line Amount
Format: NNNNNNNNNN.NNNN

Processing outgoing

EDI Sub-System:

BAAN: The order line amount from BAAN table field TFtdsls045.amta is mapped to this position.

Processing incoming

EDI Sub-System: Transmission of the value from the message file.
 BAAN: Mapping to the BAAN table field TFtdpur041.amta

Position	35	Field format	an7	Field status	M
Field name		Data record end sign			

Description: This field indicates the end of the data record. It contains the constant value 'SA5_END'.

Processing outgoing

EDI Sub-System:
 BAAN: This field will be filled with the constant value 'SA5_END'.

Processing incoming

EDI Sub-System: This field will be filled with the constant value 'SA5_END'.
 BAAN: None

3.6 SA6 Delivery Address per Orderresponse Line

Status : Conditional
 Frequency : Once per Order Position
 Description: This data record is related to one Order Position.

<i>ORDER ACKNOWLEDGEMENT INHOUSE FORMAT</i>					<i>Mapping from Application Table Fields (out)</i>		<i>Mapping to Application Fields (in)</i>	
<i>Pos</i>	<i>FIELD DESCRIPTION</i>	<i>Key</i>	<i>ST</i>	<i>FM</i>	<i>Table Field</i>	<i>Action</i>	<i>Table Field</i>	<i>Action</i>
1.	Kind of data record	O/I	M	an3	SA5		SA5	
2.	Message reference	O/I	M	an..14	tcedi701.bano			
3.	Network address customer /Supplier	O/I	M	an..17	tcedi028.neta			
4.	Order Number	O/I	M	an..30	tdsls040.eono			
5.	Order Position Number		M		tdsls041.pono			
6.	Address Qualifier		M	an1	“0“			
7.	Delivery Address Country		C	an..3	tdsls042.ccty	Code and Conversion		
8.	Delivery Address first part of the name		C	an..35	tdsls042.nama			
9.	Delivery Address second part of the name		C	an..30	tdsls042.namb			
10.	Delivery Address		C	an..30	tdsls042.namc			
11.	Delivery Address 2		C	an..30	tdsls042.namd			
12.	Delivery Address City		C	an..30	tdsls042.name			
13.	Delivery Address. further information for city e.g. province/country		C	an..30	tdsls042.namf			
14.	Delivery Address Zip Code		C	an..10	tdsls042.pstc			
15.	Data record end sign		M	an7	SA4_END			

Detailed description:	Delivery Address per order line
Kind of data record:	SA6 Delivery Address per order line

Position	1	Field format	an3	Field status	M
Field name		Kind of data record		(Key field out/in)	

Description: This field identifies the kind of data record in the message block. It contains the constant value 'SA6'.

Processing outgoing

EDI Sub-System:
BAAN: This field will be filled with the constant value 'SA6'.

Processing incoming

EDI Sub-System:
BAAN: This field will be filled with the constant value 'SA6'.

Position	2	Field format	an..14	Field status	M
Field name		Message reference		(Key field out/in)	

Description: This field identifies all connected data records of one order. The numbering of the message reference, which has to be clear by Order, helps to control the chronological order of the Orders and the complete transmission.

Processing outgoing

EDI Sub-System:
BAAN: Refer to data record SA5.

Processing incoming

EDI Sub-System:
BAAN: Refer to data record SA5

Position	3	Field format	an..17	Field status	M
Field name		Networkaddress Customer/Supplier		(Key field out)	

Description: This field contains the identification code of the supplier on the customer side.

Processing outgoing

EDI Sub-System:
BAAN: Refer to data record SA5

Position	4	Field format	an..30	Field status	M
Field name			Order Number		(Key field in/out)

Description: This field contains the order number.

Processing outgoing

EDI Sub-System:
BAAN: Refer to data record SA5

Processing incoming

EDI Sub-System:
BAAN:

Position	5	Field format	an..16	Field status	M
Field name			Order Line Number		

Description: This field contains the Customer Purchase Order Line Number.

Processing outgoing

EDI Sub-System:
BAAN: Refer to data record SA5

Processing incoming

EDI Sub-System:
BAAN:

Position	6	Field format	an1	Field status	M
Field name			Address Qualifier Delivery Address		

Description: This field contains the Qualifier which identifies the next data set as a delivery address.

0 The following data is the delivery address

This qualifier must be entered in BAAN table TBtcedi224 regarding to the used organisation.

Processing outgoing

EDI Sub-System:
BAAN: The value "0" is filled in.

Processing incoming

EDI Sub-System:
BAAN:

Position	7	Field format	an..6	Field status	C
Field name			Delivery Address Country		

Description: This field contains the Country of the Address. The following country codes are defined in BAAN table TBtcedi226 according to ODDC 6

- AT: Austria
- BE: Belgium
- CH: Switzerland
- DE: Federal Republik of Germany
- DK: Denmark
- ES: Spain
- FI: Finland
- FR: France
- GB: United Kingdom
- GR: Greece
- IE: Ireland
- IT: Italy
- LU: Luxembourg
- NL: Netherlands
- NO: Norway
- PT: Portugal
- SE: Sweden
- TR: Turkey
- YU: Yugoslavia

Processing outgoing

EDI Sub-System:

BAAN: The country code of the delivery address from BAAN table field TFtdsls042.ccty is mapped to this position and converts with BAAN table TBtcedi440.

Processing incoming

EDI Sub-System:

BAAN:

Position	8	Field format	an..35	Field status	C
Field name	Delivery Address First part of Name				

Description: This field contains the first part of the name.

Processing outgoing

EDI Sub-System:

BAAN: The First part of the Name from BAAN table field TFtdsls042.nama or tcmcs003.nama is mapped to this position.

Processing incoming

EDI Sub-System:

BAAN:

Position	9	Field format	an..30	Field status	C
Field name	Delivery Address Second part of Name				

Description: This field contains the second part of the name.

Processing outgoing

EDI Sub-System:

BAAN: The Second part of the Name from BAAN table field TFtdsls042.namb is mapped to this position.

Processing incoming

EDI Sub-System:

BAAN:

Position	10	Field format	an..30	Field status	C
Field name		Delivery Address			

Description: This field contains the first part of the Delivery Address.

Processing outgoing

EDI Sub-System:

BAAN: The first part of the Address from BAAN table field TFtdsls042.namc is mapped to this position.

Processing incoming

EDI Sub-System:

BAAN:

Position	11	Field format	an..30	Field status	C
Field name		Delivery Address 2			

Description: This field contains the second part of the delivery address.

Processing outgoing

EDI Sub-System:

BAAN: The second part of the Delivery Address from BAAN table field TFtdsls042.namd is mapped to this position.

Processing incoming

EDI Sub-System:

BAAN:

Position	12	Field format	an..30	Field status	C
Field name		Delivery Address City			

Description: This field contains the name of the City.

Processing outgoing

EDI Sub-System:

BAAN: The name of the City from BAAN table field TFtdsls042.name is mapped to this position.

Processing incoming

EDI Sub-System:

BAAN:

Position	13	Field format	an..30	Field status	C
Field name	Delivery Address for further information province or country				

Description: This field contains further information to the City (province/country)

Processing outgoing

EDI Sub-System:

BAAN: The second part of the City information from BAAN table field TFtdsls042.namf is mapped to this position or.

Processing incoming

EDI Sub-System:

BAAN:

Position	14	Field format	an..10	Field status	C
Field name	Delivery Address Zip Code				

Description: This field contains the postal or zip Code referring to the Delivery Address.

Processing outgoing

EDI Sub-System:

BAAN: The Zip Code from BAAN table field TFtdsls042.pstc is mapped to this position.

Processing incoming

EDI Sub-System:

BAAN:

Position	15	Field format	an7	Field status	M
Field name	Data record end sign				

Description: This field indicates the end of the data record. It contains the constant value 'SA6_END'.

Processing outgoing

EDI Sub-System:

BAAN: This field will be filled with the constant value 'SA6_END'.

Processing incoming

EDI Sub-System:

BAAN: This field will be filled with the constant value 'SA6_END'.

BAAN: None

