

BAAN IVc

**Definition of BEMIS 1.0.a Import and Export
File for the Message Trading Dispatch Advise**

A publication of:

Baan Development B.V.
P.O.Box 143
3770 AC Barneveld
The Netherlands

Printed in the Netherlands

© Baan Development B.V. 1999.
All rights reserved.

The information in this document is subject to change without notice. No part of this document may be reproduced, stored or transmitted in any form or by any means, electronic or mechanical, for any purpose, without the express written permission of Baan Development B.V.

Baan Development B.V. assumes no liability for any damages incurred, directly or indirectly, from any errors, omissions or discrepancies between the software and the information contained in this document.

Document Information

Code: U7280A US
Group: User Documentation
Edition: A
Date: May 1999

Table of contents

| | |
|--|------------|
| 1 Documentation of the record types | 1-1 |
| Available record types of the message type dispatch advise | 1-1 |
| Structure of the dispatch advise message (in-house format) | 1-1 |
| Branching diagram | 1-2 |
| Dispatch Advise - key field2 | 1-3 |
| Network directories | 1-4 |
| BEMIS Messages – Conventions | 1-5 |
| Changing the Date Format | 1-7 |
| 2 Dispatch Advise – Record description | 2-1 |
| SA1 Message Overhead | 2-1 |
| <i>Detailed description of Dispatch Advise, record type SA1 Overhead</i> | 2-3 |
| SA2 Dispatch Advise Header | 2-9 |
| <i>Detailed description of Dispatch Advise, record type SA2 Dispatch Advise Header</i> | 2-13 |
| SA3 Dispatch Advise Lines | 2-24 |
| <i>Detailed description of Dispatch Advise, record type SA3 Dispatch Advise Lines</i> | 2-27 |
| SA4 Dispatch Advise Line Address | 2-38 |
| <i>Detailed description of Dispatch Advise, record type SA4 Dispatch Advise Line Address</i> | 2-40 |
| 3 Sample file incoming/outgoing message | 3-1 |
| 4 Glossary of terms and abbreviations | 4-1 |

Definition of BEMIS 1.0.a Import and Export File for the Message Trading Dispatch Advise
ii

About this document

This documentation details the standard in-house data formats, which the BAAN Electronic Message Interchange System BEMIS requires as interfaces to the appropriate EDI subsystem.

The documentation is intended for developers of EDI subsystems, which want to realize an interface with BAAN IV. Furthermore, this documentation helps consultants, who want to implement an interface on this basis, to check the correct data contents of the transfer files.

This documentation describes the EDI message *incoming* and *outgoing Dispatch Advises*.

Chapter 1 describes the structure of the interface file, the different record types within the file and the used key fields.

Chapter 2 details every single record type of the message. This chapter contains an overview table with the corresponding BAAN table fields. In addition, every single field is more detailed.

Definition of BEMIS 1.0.a Import and Export File for the Message Trading Dispatch Advise

iv

1 Documentation of the record types

The following section of the documentation details the BAAN ELECTRONIC message in-house format “Dispatch Advise”.

Available record types of the message type dispatch advise

The use of the following record types is conditional (C) respectively mandatory (M), when you transfer information of a Dispatch Advise.

The Dispatch Advise message (in-house format) consists of the following records:

| ID | Status | Name |
|-----|--------|---------------------------------------|
| SA1 | M | Message Overhead |
| SA2 | M | Dispatch Advise Header |
| SA3 | M | Dispatch Advise Lines |
| SA4 | C | Dispatch Advise Line Delivery Address |

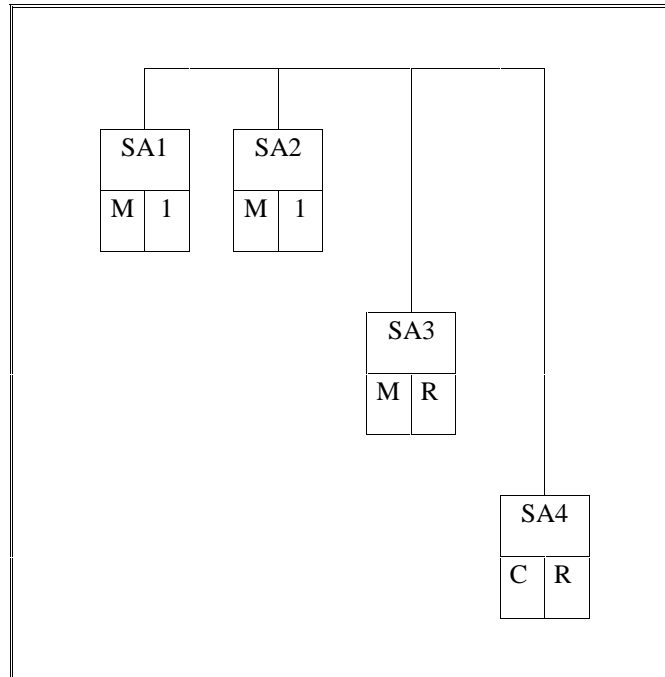
Structure of the dispatch advise message (in-house format)

The following record structure is used for the message type BEMIS dispatch advise:

| Level | Record ID | Status | Name |
|-------|-----------|--------|---------------------------------------|
| 1 | SA1 | M/1 | Message Overhead |
| 2 | SA2 | M/1 | Dispatch Advise Header |
| 3 | SA3 | M/R | Dispatch Advise Lines |
| 4 | SA4 | C/R | Dispatch Advise Line Delivery Address |

Branching diagram

The branching diagram shows the structure of the message. It indicates the hierarchical relationship between segments. A segment is a set of functionally-related BAAN tables.



Legend:

Status: Frequency:

M: mandatory message 1: once in message

C: conditional message R: repeatable in message

Figure 1, Branching diagram

For example, for one message, which consists of two Dispatch Advise Header with several Dispatch Advise positions , the BEMIS file has the following structure:

```

SA1 ...      Message Overhead
SA2 ...      Dispatch Advise Header 1
SA3 ...      Dispatch Advise Line 11
SA4 ...      Dispatch Advise Delivery Address Line 11
SA3 ...      Dispatch Advise Line 12
SA4 ...      Dispatch Advise Delivery Address Line 12
SA3 ...      Dispatch Advise Line 13
SA4 ...      Dispatch Advise Delivery Address Line 13
SA3 ...      Dispatch Advise Line 14
SA1 ...      Message Overhead
SA2 ...      Dispatch Advise Header 2
SA3 ...      Dispatch Advise Line 21
SA4 ...      Dispatch Advise Delivery Address Line 21
SA3 ...      Dispatch Advise Line 22
....
SA1          Message Overhead New Message

```

Dispatch Advise - key field2

The following structure of the key fields is used to determine the corresponding records of a Dispatch Advise:

| Record type | Key field 1 | Key field 2 | Key field 3 | Key field 4 | Key field 5 | Key field 6 |
|-------------|-------------------|-----------------------------------|------------------------|--------------|-----------------------|-------------|
| SA1 | Message Reference | Network address customer/supplier | | | | |
| SA2 | Message Reference | Network address customer/supplier | Dispatch Advise Number | | | |
| SA3 | Message Reference | Network address customer/supplier | Dispatch Advise Number | Order Number | Order Position Number | |
| SA4 | Message Reference | Network address customer/supplier | Dispatch Advise Number | Order Number | Order Position Number | |

Network directories

The so-called network directories form the basis of the communication between the EDI subsystem and BAAN IV. These directories are established in BAAN. The network basis directories for each network are defined in the BAAN session tcedi0120m000. For the network BEMIS, the basis directories can be indicated in the following way:

/auto3/baanIV/bemis/dispatchadvise

BAAN will additionally create the following subdirectories:

/auto3/baanIV/bemis/dispatchadvise/appl_from/

/auto3/baanIV/bemis/dispatchadvise/appl_to/

/auto3/baanIV/bemis/dispatchadvise/command/

/auto3/baanIV/bemis/dispatchadvise/store_rcv/

/auto3/baanIV/bemis/dispatchadvise/store_sent/

/auto3/baanIV/bemis/dispatchadvise/trace/

The above mentioned directories have the following function:

- 1 .../appl_from/: In this directory, BAAN IV records the outgoing messages which are the defined BEMIS in-house format files. The EDI subsystem can collect them from here.
- 2 .../appl_to/: The EDI subsystem writes the incoming message into this directory in the BAAN IV in-house format.
- 3 .../command/: Directory of the semaphores.
- 4 .../store_rcv/: BAAN IV stores in this directory processed incoming messages, if the configuration is accordingly. During this process an additional subdirectory by incoming message file is created which is named with a date and time stamp indicating when the message was moved.
- 5 .../store_sent/: BAAN IV stores in this directory processed outgoing messages if the configuration is accordingly. During this process an additional subdirectory by outgoing message file is created which is named with a date and time stamp indicating when the message was moved.
- 6 .../trace/: BAAN creates under this directory a log of the incoming and outgoing messages in the processing order, if the configuration is accordingly.

For every message type one network directory is used for outgoing and one for incoming messages. This means that one message file contains data for several partners.

The file name of the BEMIS in-house format file of the Dispatch Advise, which is being described in this documentation, is defined in the following way:

| Direction | File name | Network directory |
|-----------|-------------|-------------------|
| outgoing | dadvice.out | ../appl_from |
| incoming | dadvice.in | ../appl_to |

BEMIS Messages – Conventions

The following general rules apply to a message record in a BEMIS message file:

- 1 The length of a record can vary.
- 2 The message record must consist of all fields, even if not every field contains a value.
- 3 The fields in the file are to be separated by a ; .
- 4 The text values of the fields have to be put into “”.
- 5 The numerical values must not be put into “”.
- 6 Every message record starts with “SAX”.
- 7 Every message record ends with “SAX_END”.

In the following sections you will find the format descriptions for the individual record types of the BEMIS in-house format file. The tables contain the following data:

| DISPATCH ADVISE INHOUSE FORMAT | | | | |
|--------------------------------|-------------------|-----|----|----|
| Pos | FIELD DESCRIPTION | Key | ST | FM |

The first block of the table describes the format of a record type:

| | |
|------------|--|
| Pos. | Position of the field in the record |
| Field name | Description of the field |
| Key | Key field outgoing (O) / incoming (I) |
| ST | Field status mandatory (M) / conditional (C) |
| FM | Field format |
| an..14 | alphanumeric field with a maximum of 14 characters |
| an14 | alphanumeric field with exactly 14 characters |
| n..10 | numerical field with a maximum of 10 digits |
| n1 | numerical field with exactly 1 character |

When BAAN generates outgoing messages, the numerical fields are written into the in-house format file without leading zeros. For example, for the year “0000” a “0” is written into the BEMIS message file.

| Mapping from Application Table Fields (Outcoming) | |
|---|--------|
| Table Field | Action |

The second block of the table describes the corresponding table field for outgoing messages in BAAN IV as well as the possible special actions, which are taken during the processing of the messages.

| Mapping to Application Table Fields (Incoming) | |
|--|--------|
| Table Field | Action |

The third block of the table describes the corresponding table field for incoming messages in BAAN IV as well as the possible special actions, which are taken during the processing of the messages.

In the past, there seemed to be some doubts about the way BAAN points out a position within the message file. Here are some additional explanations:

As defined in BEMIS a position within a message file is pointed out using two semikolons.

To draw an example: "SAX";...;Position;...;"SAX_END"

If an position in a BEMIS Message File is not taken by a value (this means the position is empty), the position is pointed out as shown above. Moreover the BAAN EDI Module distinguishes between numerical and alphanumerical data format. If a position defined as numerical is empty the position is pointed out using semikolons. On the other hand empty alphanumerical positions are exported in two way. The first way is to point out a position using the semikolons. The second way BAAN exports empty alphanumerical positions is to write two inverted commans within the position. This depends whether the alphanumerical field existis in BAAN's database or not. Finally we take a look at the following expample:

empty numerical Position:

"SAX";...;;...;"SAX_END"

empty alphanumerical Position:

"SAX";...;;...;"SAX_END"

or

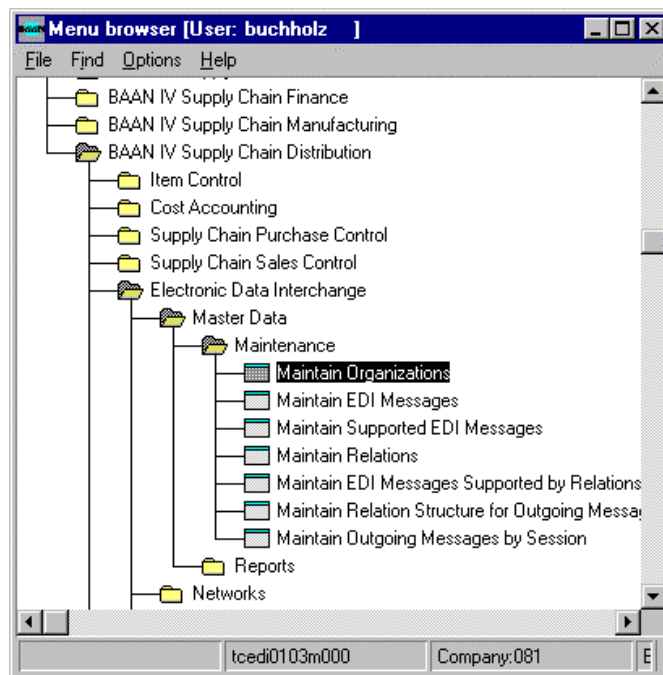
"SAX";...;"";...;"SAX_END"

Changing the Date Format

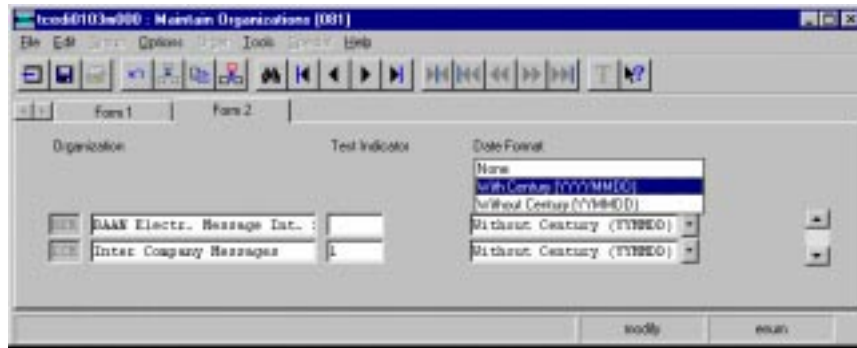
For the BAAN Versions b and c2/3 we have defined a date format using up to 6 numerical digits. Reading this definition, you will find out that the date format has been changed to 8 digits at maximum. With the BAAN Version BAAN IVC4 the delivered BEMIS default file the defaults.edi will be different in this point (in comparison to the versions delivered before). In BAAN EDI there is one global Parameter in order to send out date information including the two digits for the century.

The enclosed screen shots will show you where you will find the responsible parameter.

You have to choose the following menu option:



After you called the session tcedi0103m000 you will see that the entry for the dateformat on form two has been changed to “With Century (YYYYMMDD).



PLEASE NOTICE: If you use this option above the date format of every exported message will be changed to 8 digits! This means that the partner system (the translator software) has to be able to translate each outgoing message coming with the changed date format!

Following the table overview, every BAAN field is more detailed, including information about the processing in the EDI subsystem and in BAAN IV.

2 Dispatch Advise – Record description

This chapter describes the record types which are used in the BAAN standard in-house message format for Dispatch Advises.

SA1 Message Overhead

Status: Mandatory
Frequency: Once by message
Description: This record supports the clear identification of the whole message.

| DISPATCH ADVISES INHOUSE FORMAT | | | | | Mapping from Application Table Fields (out) | | Mapping to Application Fields (in) | |
|---------------------------------|-------------------------------------|-----|----|--------|---|------------------------------------|------------------------------------|-----------------------------|
| Pos | FIELD DESCRIPTION | Key | ST | FM | Table Field | Action | Table Field | Action |
| 1 | Record type | O/I | M | an3 | SA1 | | SA1 | |
| 2 | Message reference | O/I | M | an..14 | tcedi701.bano | Generation (see below) | tcedi702.bano | Generation by EDI subsystem |
| 3 | Network address customer / supplier | O/I | M | an..17 | tcedi028.neta | Conversion (see below) | tcedi702.reno | Conversion (see below) |
| 4 | Our Identification in the network | | M | an..17 | tcedi020.neta | Conversion (see below) | empty | |
| 5 | Message | | M | an..6 | tcedi001.code | Conversion (see below) | tcedi702.mess | Conversion (see below) |
| 6 | Organization | | M | an..6 | tcedi003.code | Conversion (see below) | tcedi702.orga | Conversion (see below) |
| 7 | Order type | | M | an..35 | tcedi011.koor | Conversion (see below) | tcedi702.koor | Conversion (see below) |
| 8 | Order reference | | M | an..20 | empty | not filled at the moment (...;...) | tcedi702.msno | Conversion (see below) |
| 9 | Date of Transmission | | M | n..8 | current date | | tcedi702.send | |
| 10 | Time of Transmission | | M | n..4 | current time | | tcedi702.sent | |
| 11 | Transfer code old | | M | an..14 | empty | not filled at the moment (...;...) | tcedi702.prno | |
| 12 | End of record sign | | M | an7 | SA1_END | | SA1_END | |

Definition of BEMIS 1.0.a Import and Export File for the Message Trading Dispatch Advise

Detailed description of Dispatch Advise, record type SA1 Overhead

| | | | | | |
|------------|--------------------|--------------|--------------------|--------------|----------|
| Position | 1 | Field format | an3 | Field status | M |
| Field name | Record type | | (key field out/in) | | |

Description: This field identifies the record type in the message block. It contains the fixed value 'SA1'.

Processing outgoing

EDI subsystem:

BAAN: This field is filled with the fixed value 'SA1'.

Processing incoming

EDI subsystem: This field is filled with the fixed value 'SA1'.

BAAN: None

| | | | | | |
|------------|--------------------------|--------------|--------------------|--------------|----------|
| Position | 2 | Field format | an..14 | Field status | M |
| Field name | Message reference | | (key field out/in) | | |

Description: This field identifies all connected records of one dispatch advise. The message reference has to be clear by dispatch advise. The numbering helps to control the chronological order of the Dispatch Advises and the complete transfer. The field consists of a fix part with four characters, the current date in the format YYMMDD and a serial number with four characters.

The special format is defined in the network parameters in the BAAN table tcedi020. When generating the message reference with the EDI subsystem, the created message reference needs to be specific, that means unique. While storing the message reference BAAN controls whether it is specific.

Processing outgoing

EDI subsystem:

BAAN: BAAN generates this number to identify a dispatch advise, stores it in the BAAN table field tcedi701.bano and writes it into all records of a Dispatch Advise.

Processing incoming

EDI subsystem: The EDI subsystem generates this number to identify a Dispatch Advise and writes it into all records of a Dispatch Advise.

BAAN: Mapping to the BAAN table field TFtcedi702.bano.

| | | | | | |
|------------|---|--------------|---------------|--------------|----------|
| Position | 3 | Field format | an..17 | Field status | M |
| Field name | Network address customer / supplier (key field out/in) | | | | |

Description: This field contains on the outgoing side the network address of the customer and on the incoming side the network address of the supplier.

Processing outgoing

EDI subsystem:

BAAN: The network address is stored in the BAAN table tcedi028 ‘Relations by network’ under the corresponding business partner (customer) and the corresponding network in the BAAN field TFtcedi028.neta. The contents of this field is mapped to the position of the transfer file.

Processing incoming

EDI subsystem:

BAAN: The network address determines the corresponding business partner (supplier) and the network in the BAAN table tcedi028 ‘Relations by network’. This identification is mapped to the BAAN field TFtcedi702.reno.

| | | | | | |
|------------|--|--------------|---------------|--------------|----------|
| Position | 4 | Field format | an..17 | Field status | M |
| Field name | Our identification in the network | | | | |

Description: This field contains on the outgoing side our identification (supplier) in the network.

Processing outgoing

EDI subsystem:

BAAN: The identification of the supplier (myself) in the used network is entered in the BAAN table tcedi020 ‘Networks’. The BAAN field TFtcedi020.neta is mapped to this position.

Processing incoming

EDI subsystem: Transfer of the value from the message file.

BAAN: On the incoming side this field is ignored.

| | | | | | |
|------------|----------------|--------------|--------------|--------------|----------|
| Position | 5 | Field format | an..6 | Field status | M |
| Field name | Message | | | | |

Description: This field contains the code for the identification of the concerned message. The code of the message type dispatch advise is 'DADVIS'.

Processing outgoing

EDI subsystem:

BAAN: The internal message code tcedi001.code 'DADVIS' of the BAAN table tcedi001 'Supported EDI Messages' is mapped to this position.

Processing incoming

EDI subsystem: This field is filled with the fixed value 'DADVIS'.

BAAN: The message code in the BAAN table tcedi001 'Supported EDI Messages' determines, which internal message is connected to this BEMIS Dispatch Advise. In the BAAN table tcedi005 'EDI Messages' is determined for every message, which session (DII) is used in BAAN to process the BEMIS dispatch advise. The message code is mapped to the BAAN field TFtcedi702.mess.

| | | | | | |
|------------|---------------------|--------------|--------------|--------------|----------|
| Position | 6 | Field format | an..6 | Field status | M |
| Field name | Organization | | | | |

Description: This field contains the organization (Standard/Norm), which is used for the EDI communication.

Processing outgoing

EDI subsystem:

BAAN: The internal organisation code tcedi003.code 'BEMIS' from the BAAN table tcedi003 'Organizations' is mapped to this position.

Processing incoming

EDI subsystem: This field is filled with the fixed value ‘BEMIS’.

BAAN: Mapping to BAAN field TFtcedi702.orga.

The corresponding organization must have been entered into the BAAN table tcedi003.

| | | | | | |
|------------|-------------------|--------------|---------------|--------------|----------|
| Position | 7 | Field format | an..35 | Field status | M |
| Field name | Order type | | | | |

Description: This field contains a code for the concerned order type.

Processing outgoing

EDI subsystem:

BAAN: In BAAN table tcedi011 there must be an entry for this order type in connection with the appropriate message and organization. The BAAN field TFtcedi011.koor is mapped to this position. It contains the code DADVISE (...;“DADVISE“;...) or any other code defined. The inhouse Order Typ is converted in TBtcedi432..

Processing incoming

EDI subsystem: The value DADVISE is entered in this field (...;“DADVISE“;...) or any other defined Code for the dispatch advise.

BAAN: Mapping to BAAN field TFtcedi702.koor.

In BAAN table tcedi200 there must be an entry for this order type in connection with the appropriate message and organization.

| | | | | | |
|------------|------------------------|--------------|---------------|--------------|----------|
| Position | 8 | Field format | an..35 | Field status | M |
| Field name | Order reference | | | | |

Description: This field contains a code for the order reference.

Processing outgoing

EDI subsystem:

BAAN: The position will not be filled; here (...;“““;...).

Processing incoming

EDI subsystem: Transfer of the value from the transfer file.

BAAN: Mapping to BAAN field TFtcedi702.msno

| | | | | | |
|------------|----------------------------------|--------------|------|--------------|----------|
| Position | 9 | Field format | n..8 | Field status | M |
| Field name | Date of transmission date | | | | |

Description: This field contains on the outgoing side the current date, on which the message was created. On the incoming side, this field contains the arrival date of the message at the EDI subsystem. The date is displayed in the following format: YYYYMMDD.

Processing outgoing

EDI subsystem:

BAAN: Mapping of the current date to the position.

Processing incoming

EDI subsystem: Entry of the arrival date of the message at the EDI subsystem.

BAAN: Mapping to BAAN field TFtcedi702.send.

| | | | | | |
|------------|-----------------------------|--------------|-------------|--------------|----------|
| Position | 10 | Field format | n..4 | Field status | M |
| Field name | Time of Transmission | | | | |

Description: This field contains on the outgoing side the time, when the message was created. On the incoming side, the field contains the arrival time of the message at the EDI subsystem. The time is displayed in the following format: HHMM.

Processing outgoing

EDI subsystem:

BAAN: Mapping of the current time to the position.

Processing incoming

EDI subsystem: Entry of the arrival time of the message at the EDI subsystem.

BAAN: Mapping to BAAN field TFtcedi702.send

| | | | | | |
|------------|--------------------------|--------------|---------------|--------------|----------|
| Position | 11 | Field format | an..14 | Field status | M |
| Field name | Transfer code old | | | | |

Description: This field contains the reference number of the previous transfer.

Processing outgoing

EDI subsystem:

BAAN: The position will not be filled; here (.,;“;..).

Processing incoming

EDI subsystem: Transfer of the value from the transfer file.

BAAN: Mapping to BAAN field TFtcedi702.pno

| | | | | | |
|------------|---------------------------|--------------|------------|--------------|----------|
| Position | 12 | Field format | an7 | Field status | M |
| Field name | End of record sign | | | | |

Description: This field indicates the end of the record. It contains the fixed value ‘SA1_END’.

Processing outgoing

EDI subsystem:

BAAN: The field is filled with the fixed value ‘SA1_END’.

Processing incoming

EDI subsystem: The field is filled with the fixed value ‘SA1_END’.

BAAN: None

SA2 Dispatch Advise Header

Status: Mandatory

Frequency: Once by message

Description: For a Dispatch Advise this record type is available only once. All the records, which follow up to the next record of the type SA2, refer to the same Dispatch Advise Number.

| DISPATCH ADVISE INHOUSE FORMAT | | | | | Mapping from Application Table Fields (out) | | Mapping to Application Fields (in) | |
|--------------------------------|--|-----|----|----------------|---|--|------------------------------------|------------------------------|
| Pos | FIELD DESCRIPTION | Key | ST | FM | Table Field | Action | Table Field | Action |
| 1. | Record type | O/I | M | an3 | SA2 | | SA2 | |
| 2. | Message reference | O/I | M | an..14 | tcedi701.bano | Generation (see below) | tcedi702.bano | Generation by EDI Sub-System |
| 3. | Network Customer / supplier | O/I | M | an..15 | tcedi028.neta | | tdpur400.suno | |
| 4. | Dispatch Advise Number | O/I | M | n..6 an..10 | tdsls045.dino | | tdpur400.dino | |
| 5. | Address Qualifier Delivery Address | | M | an1 | tcedi224.code | here: "0"Delivery Address | 0 | |
| 6. | Delivery Address Country | | C | an..6 | tccom013.ccty tccom010.ctty tdsls042.ctty | NDA DDA SDA Code and Conversion | | |
| 7. | Delivery Address first part of the name | | C | an..35 | tccom013.nama tccom010.nama tdsls042.nama | NDA DDA SDA | | |
| 8. | Delivery Address second part of the name | | C | an..30 | tccom013.namb tccom010.namb tdsls042.namb | NDA DDA SDA | | |
| 9. | Delivery Address Part 1 | | C | an..30 | tccom013.namc tccom010.namc tdsls042.namc | NDA DDA SDA | | |

| DISPATCH ADVISE INHOUSE FORMAT | | | | | Mapping from Application Table Fields (out) | | Mapping to Application Fields (in) | |
|--------------------------------|--|-----|----|--------|---|---------------------|------------------------------------|--------|
| Pos | FIELD DESCRIPTION | Key | ST | FM | Table Field | Action | Table Field | Action |
| 10. | Delivery Address Part 2 | | C | an..30 | tccom013.namd tccom010.namd tdsls042.namd | NDA DDA SDA | | |
| 11. | Delivery Address City | | C | an..30 | tccom013.name tccom010.name tdsls042.name | NDA DDA SDA | | |
| 12. | Delivery Address. further information for city e.g. province/country | | C | an..30 | tccom013.namf tccom010.namf tdsls042.namf | NDA DDA SDA | | |
| 13. | Delivery Address Zip Code | | C | an..10 | tccom013.pstc tccom010.pstc tdsls042.pstc | NDA DDA SDA | | |
| 14. | TAX Number | | C | an..20 | tccom013.fovn tccom010.fovn tdsls042.fovn | NDA DDA SDA | | |
| 15. | Delivery Address Code | | C | an..3 | tdsls040.cdel | Code and Conversion | | |
| 16. | Oualifier Address Code ID | | M | an2 | “DP” | | “DP” | |
| 17. | Oualifier Address Code ID | | M | an2 | “ZZ” | | “ZZ” | |
| 18. | Terms of Delivery | | C | an..3 | tdsls040.cdec | Code and Conversion | | |

| DISPATCH ADVISE INHOUSE FORMAT | | | | | Mapping from Application Table Fields (out) | | Mapping to Application Fields (in) | |
|--------------------------------|---|-----|----|--------|---|---------------------|------------------------------------|--------|
| Pos | FIELD DESCRIPTION | Key | ST | FM | Table Field | Action | Table Field | Action |
| 19. | Description of Terms of delivery | | C | an..30 | tcms041.dsca | | | |
| 20. | Code of Forwarding Agent | | C | an..14 | tdsls040.cfrw | Code and Conversion | | |
| 21. | Description of the Code for the Forwarding Agent | | C | an..30 | tcms080.dsca | | | |
| 22. | Reference field A | | C | an..30 | tdsls040.refa | | | |
| 23. | Reference field B | | C | an..30 | tdsls040.refb | | | |
| 24. | Record end sign <i>Constant value</i> "SA2_END" | | M | an7 | SA2_END | | SA2_END | |

Evaluation Expression : NDA

strip(tdsls040.cdel) <> ""

Evaluation Expression : DDA

(strip(tdsls040.cdel) = "") and (tdsls042.orno = 0)

Evaluation Expression : SDA

(tdsls042.orno <> 0) and (tdsls042.ckor = 0)

Detailed description of Dispatch Advise, record type SA2 Dispatch Advise Header

| | | | | | |
|------------|--------------------|--------------|--------------------|--------------|----------|
| Position | 1 | Field format | an3 | Field status | M |
| Field name | Record type | | (key field out/in) | | |

Description: The field identifies the record type in the message block.

It contains the fixed value 'SA2'.

Processing outgoing

EDI subsystem: None

BAAN: The position is filled with the fixed value 'SA2'.

Processing incoming

EDI subsystem: The position is filled with the fixed value 'SA2'.

BAAN: None

| | | | | | |
|------------|--------------------------|--------------|--------------------|--------------|----------|
| Position | 2 | Field format | an..14 | Field status | M |
| Field name | Message reference | | (key field out/in) | | |

Description: This field identifies all connected records of one dispatch advise. The message reference has to be clear by dispatch advise. The numbering helps to control the chronological order of the Dispatch Advises and the complete transfer. The field consists of a fix part with four characters, the current date in the format dispatch advise YYMMDD and a serial number with four characters.

The special format is defined in the network parameters in BAAN table tcedi020. When generating the message reference with the EDI subsystem, the created message reference needs to be specific, that means unique. While storing the message reference BAAN controls whether it is specific.

Processing outgoing

EDI subsystem:

BAAN: The BAAN system generates this number to identify a Dispatch Advise, stores it in the BAAN table field tcedi701.bano and writes it into all records of a dispatch advise.

Processing incoming

EDI subsystem: The EDI subsystem generates this number to identify a Dispatch Advise and writes it into all records of a dispatch Advise.

BAAN: Mapping to BAAN field TFtcedi702.bano.

| | | | | | |
|------------|--|--------------|---------------|--------------|--------------------|
| Position | 3 | Field format | an..15 | Field status | M |
| Field name | Network address customer / supplier | | | | (key field out/in) |

Description: This field contains on the outgoing side the network address of the supplier and on the incoming side the network address of the customer.

Processing outgoing

EDI subsystem:

BAAN: The network address is stored in the BAAN table tcedi028 'Relations by network' under the corresponding business partner and the corresponding network in the BAAN field TFtcedi028.neta. The contents of this field is mapped to the position of the transfer file.

Processing incoming

EDI subsystem:

BAAN: The network address determines the corresponding business partner and the network in the BAAN table tcedi028 'Relations by network'. This identification is mapped in the BAAN field TFtdpur400.suno.

| | | | | | |
|------------|-------------------------------|--------------|-----------------------------|--------------|----------|
| Position | 4 | Field format | out n..6 / in an..10 | Field status | M |
| Field name | Dispatch Advise Number | | | | |

Description: The number of the dispatch advise number on which the delivery is printed.

Processing outgoing

EDI subsystem: None

BAAN: Mapping of BAAN field TFtdsls045.dino to position.

Processing incoming

EDI subsystem: None

BAAN: Mapping of field value to BAAN field TFtdpur040.dino.

| | | | | | |
|------------|---|--------------|------------|--------------|----------|
| Position | 5 | Field format | an1 | Field status | M |
| Field name | Address Qualifier Delivery Address | | | | |

Description: This field contains the qualifier address type which is used to determine the delivery address from the value in position 5. This position must be filled with the fixed value '0'.

Processing outgoing

EDI-subsystem: None

BAAN: This field is filled with the fixed value '0'.

Processing incoming

EDI subsystem: This field is filled with the fixed value '0'.

BAAN: None

| | | | | | |
|------------|---------------------------------|--------------|--------------|--------------|----------|
| Position | 6 | Field format | an..6 | Field status | C |
| Field name | Delivery Address Country | | | | |

Description: The country where the customer's goods must be delivered according to ODDC 6.

AT: Austria
 BE: Belgium
 CH: Switzerland
 DE: Federal Republik of Germany
 DK: Denmark
 ES: Spain
 FI: Finland
 FR: France
 GB: United Kingdom
 GR: Greece
 IE: Ireland
 IT: Italy
 LU: Luxembourg
 NL: Netherlands
 NO: Norway
 PT: Portugal
 SE: Sweden
 TR: Turkey
 YU: Yugoslavia

Processing outgoing

EDI-subsystem: None

BAAN: Mapping of BAAN field TFtccom013.ccty or tccom010.ccty or tdsls042.ccty to position. This depends on the used Evaluation Expressions.

Processing incoming

EDI subsystem: None.

BAAN: None.

| | | | | | |
|------------|--|--------------|---------------|--------------|----------|
| Position | 7 | Field format | an..35 | Field status | C |
| Field name | Delivery Address first part of the name | | | | |

Description: The first part of the name of the Delivery Address.

Processing outgoing

EDI-subsystem: None

BAAN: Mapping of BAAN field TFtccom013.nama or tccom010.nama or tdsls042.nama to position. This depends on the used Evaluation Expressions.

Processing incoming

EDI subsystem: None

BAAN: None

| | | | | | |
|------------|---|--------------|---------------|--------------|----------|
| Position | 8 | Field format | an..30 | Field status | C |
| Field name | Delivery Address second part of the name | | | | |

Description: The second part of the name of the Delivery Address.

Processing outgoing

EDI subsystem: None

BAAN: Mapping of BAAN field TFtccom013.namb or tccom010.namb or tdsls042.namb to position. This depends on the used Evaluation Expressions.

Processing incoming

EDI subsystem: None

BAAN: None

| | | | | | |
|------------|--------------------------------|--------------|---------------|--------------|----------|
| Position | 9 | Field format | an..30 | Field status | C |
| Field name | Delivery Address Part 1 | | | | |

Description: The first part of the Delivery Address.

Processing outgoing

EDI subsystem: None

BAAN: Mapping of BAAN field TFtccom013.namec or tccom010.namec or tdsls042.namec to position. This depends on the used Evaluation Expressions.

Processing incoming

EDI subsystem: None

BAAN: None

| | | | | | |
|------------|--------------------------------|--------------|---------------|--------------|----------|
| Position | 10 | Field format | an..30 | Field status | C |
| Field name | Delivery Address Part 2 | | | | |

Description: The second part of the Delivery Address.

Processing outgoing

EDI subsystem: None

BAAN: Mapping of BAAN field TFtccom013.namec or tccom010.namec or tdsls042.namec to position. This depends on the used Evaluation Expressions.

Processing incoming

EDI subsystem: None

BAAN: None

| | | | | | |
|------------|------------------------------|--------------|---------------|--------------|----------|
| Position | 11 | Field format | an..30 | Field status | C |
| Field name | Delivery Address City | | | | |

Description: The name of the City of the Delivery Address.

Processing outgoing

EDI subsystem: None

BAAN: Mapping of BAAN field TFtccom013.name or tccom010.name or tdsls042.name to position. This depends on the used Evaluation Expressions.

Processing incoming

EDI subsystem: None

BAAN: None

| | | | | | |
|------------|---|--------------|---------------|--------------|----------|
| Position | 12 | Field format | an..30 | Field status | C |
| Field name | Delivery Address für further information | | | | |

Description: This position can be used for further information concerning the delivery address, e.g. province or country information.

Processing outgoing

EDI subsystem: None

BAAN: Mapping of BAAN field TFtccom013.name or tccom010.name or tdsls042.name to position. This depends on the used Evaluation Expressions.

Processing incoming

EDI subsystem: None

BAAN: None

| | | | | | |
|------------|----------------------------------|--------------|---------------|--------------|----------|
| Position | 13 | Field format | an..10 | Field status | C |
| Field name | Delivery Address Zip Code | | | | |

Description: The ZIP code of the specific delivery address.

Processing outgoing

EDI subsystem: None

BAAN: Mapping of BAAN field TFtccom013.pstc or tccom010.pstc or tdsls042.pstc to position. This depends on the used Evaluation Expressions.

Processing incoming

EDI subsystem: None

BAAN: None

| | | | | | |
|------------|-------------------|--------------|---------------|--------------|----------|
| Position | 14 | Field format | an..20 | Field status | C |
| Field name | TAX Number | | | | |

Description: As from 1993, companies trading within the EU are legally required to report their import/export activities. Reporting is based on the tax number. Not filling in the tax number will cause the system to produce a message.

Processing outgoing

EDI subsystem: None

BAAN: Mapping of BAAN field TFtccom013.fovn or tccom010. fovn or tdsls042. fovn to position. This depends on the used Evaluation Expressions.

Processing incoming

EDI subsystem: None

BAAN: None

| | | | | | |
|------------|------------------------------|--------------|---------------|--------------|----------|
| Position | 15 | Field format | an..17 | Field status | C |
| Field name | Delivery Address Code | | | | |

Description: This field contains a Code for the Delivery Adresse. This can be used instead of a coneret address, if the codes are mutual defined with the supplier/customer. Also the ILN-Number can be used.

Processing outgoing

EDI subsystem: None

BAAN: The delivery address code of the sales order from BAAN table field TFtdsls040.cdel is mapped to this position and converted with BAAN table TBtcedi462.

Processing incoming

EDI subsystem: None

BAAN: None

| | | | | | |
|------------|-------------------------------|--------------|------------|--------------|----------|
| Position | 16 | Field format | an2 | Field status | M |
| Field name | Qualifier address code | | | | |

Description: This field contains the qualifier address code which is used to determine the delivery address from the value in position 16. This position must be filled with the fixed value 'DP'.

Processing outgoing

EDI subsystem:

BAAN: This field is filled with the fixed value 'DP'.

Processing incoming

EDI subsystem: This field is filled with the fixed value 'DP'.

BAAN: None

| | | | | | |
|------------|-------------------------------|--------------|------------|--------------|----------|
| Position | 17 | Field format | an2 | Field status | M |
| Field name | Qualifier address type | | | | |

Description: This field contains the qualifier address type which is used to determine the delivery address from the value in position 16. This position must be filled with the fixed value 'ZZ'.

Processing outgoing

EDI subsystem:

BAAN: This field is filled with the fixed value 'ZZ'.

Processing incoming

EDI subsystem: This field is filled with the fixed value 'ZZ'.

BAAN: None.

| | | | | | |
|------------|--------------------------|--------------|--------------|--------------|----------|
| Position | 18 | Field format | an..3 | Field status | C |
| Field name | Terms of Delivery | | | | |

Description: The terms of delivery code indicates the terms under which goods are delivered.

It contains a unique alphanumerical identification.

01 = unfranked (unfrei)

02 = free destination (frei Bestimmungsort)

03 = free to the door (frei Haus)

04 = free German border (frei deutsche Grenze)

05 = free receiving carrier (frei Empfängsspediteur)

99 = special postage (Sonderfrankatur)

Processing outgoing

EDI-subsystem: None

BAAN: Mapping of BAAN field TFtdsls040.cdec to position. Please maintain the Code and Conversion Table Maintain Conversion of Terms of Delivery Codes (out)tcedi4130m000.

Processing incoming

EDI subsystem: None

BAAN: None

| | | | | | |
|------------|---|--------------|---------------|--------------|----------|
| Position | 19 | Field format | an..30 | Field status | C |
| Field name | Description of the Terms of Delivery | | | | |

Description: Description of the terms of delivery.

Processing outgoing

EDI-subsystem: None

BAAN: Mapping of BAAN field TFtdsls040.dsca to position.

Processing incoming

EDI subsystem: None.

BAAN: None.

| | | | | | |
|------------|-------------------------------------|--------------|---------------|--------------|----------|
| Position | 20 | Field format | an..14 | Field status | C |
| Field name | Code of the Forwarding Agent | | | | |

Description: The forwarding agent who handles the transport of the goods. The field contains an alphanumerical code with a maximum of 14 characters.

Processing outgoing

EDI-subsystem: None

BAAN: Mapping of BAAN field TFtdsls040.cfrw to position. Used code and conversion table: TBtcedi456 (Conversion of Forwarding Agents)

Processing incoming

EDI subsystem: None

BAAN: None

| | | | | | |
|------------|---|--------------|-------------------|--------------|----------|
| Position | 21 | Field format | out an..30 | Field status | C |
| Field name | Description of theeCode for the Forwarddding Agent | | | | |

Description: Clear description of the forwarding agent.

Processing outgoing

EDI-subsystem: None

BAAN: Mapping of BAAN field TFtcmcs080.dsca to position.

Processing incoming

EDI subsystem: None.

BAAN: None.

BAAN: None

| | | | | | |
|------------|--------------------|--------------|---------------|--------------|----------|
| Position | 22 | Field format | an..30 | Field status | C |
| Field name | Reference A | | | | |

Description: The name of the contact at the customer's "Purchase" department or any other information.

Processing outgoing

EDI-subsystem: None

BAAN: Mapping of BAAN field TFtdsls040.refa to position.

Processing incoming

EDI subsystem: None

BAAN: None

| | | | | | |
|------------|--------------------|--------------|---------------|--------------|----------|
| Position | 23 | Field format | an..30 | Field status | M |
| Field name | Reference B | | | | |

Description: This is a reference field where extra information can be filled in this information is printed on the order documents.

Processing outgoing

EDI-subsystem: None

BAAN: Mapping of BAAN field TFtdsls040.refb to position.

Processing incoming
EDI subsystem: None
BAAN: None.

| | | | | | |
|------------|---------------------------|--------------|------------|--------------|----------|
| Position | 24 | Field format | an7 | Field status | M |
| Field name | End of record sign | | | | |

Description: This field identifies the end of the record.
'SA2_END'

Processing outgoing
EDI subsystem: None
BAAN: Mapping of value 'SA2_END' to position.
Processing incoming
EDI subsystem: Mapping of value 'SA2_END' to position.
BAAN: None

SA3 Dispatch Advise Lines

Status: Mandatory

Frequency: Repeatable by shipment

Description: This record type supports the transfer of dispatch advise data to a shipment. This record type is applied several times to one shipment.

| DISPATCH ADVISE INHOUSE FORMAT | | | | | Mapping from Application Table Fields (out) | | Mapping to Application Fields (in) | |
|--------------------------------|--|-----|----|----------------|---|------------------------|------------------------------------|------------------------------|
| Pos | FIELD DESCRIPTION | Key | ST | FM | Table Field | Action | Table Field | Action |
| 1. | Record type | O/I | M | an3 | SA3 | | SA3 | |
| 2. | Message reference | O/I | M | an..14 | tcedi701.bano | Generation (see below) | tcedi702.bano | Generation by EDI Sub-System |
| 3. | Network Address Customer / Supplier | O/I | M | an..15 | tcedi028.neta | | tdpur400.suno | |
| 4. | Dispatch Advise Number | O/I | M | n..6 an..10 | tdsls045.dino | | tdpur400.dino | |
| 5. | Sales Order Number | | C | n..6 | tdsls045.orno | | | |
| 6. | Sales Order Position Number | | C | n..4 | tdsls045.pono | | | |
| 7. | Customer Order Number | | C | an..30 n..6 | tdsls040.eono | | tdpur400.orno | |
| 8. | Customer Order Number Line | | C | n..9 n..4 | tdsls041.epos | | tdpur400.pono | |
| 9. | Delivery Date | | C | n..8 | tdsls045.ddat | | tdpur400.date | |
| 10. | Ordered Quantity | | C | n..15 | tdsls045.oqua | | tdpur400.oqua | |
| 11. | Back Order Quantity | | C | n..15 | tdsls045.bqua | | tdpur400.bqua | |
| 12. | Delivered Quantity | | C | n..15 | tdsls045.dqua | | tdpur400.diqu | |
| 13. | Sales Unit Code | | C | an3 | tdsls041.cuqs | Code and Conversion | tdpur400.ciqp | |

| DISPATCH ADVISE INHOUSE FORMAT | | | | | Mapping from Application Table Fields (out) | | Mapping to Application Fields (in) | |
|--------------------------------|--------------------------------|-----|----|--------|---|---------------------|------------------------------------|--------|
| Pos | FIELD DESCRIPTION | Key | ST | FM | Table Field | Action | Table Field | Action |
| 14. | Sales Price | | C | n..15 | tdsls041.pric | | | |
| 15. | Order Date | | C | n..8 | tdsls041.odat | | | |
| 16. | Planed Delivery Date | | C | n..8 | tdsls041.ddat | | | |
| 17. | Code of the actual Project | | C | an..6 | tdsls041.cprj | | | |
| 18. | Customer's Item Code | | C | an..16 | tdsls041.item | | | |
| 19. | Supplier's Item Code | | C | an..27 | tdsls041.item | Code and Conversion | | |
| 20. | Description of the Item | | C | an..30 | tiitm001.dsca | | | |
| 21. | Master Bill of Lading Number | | C | n..6 | tdsls045.fono | | | |
| 22. | Qualifier for the Item Code Id | | C | an2 | “SA” | | | |
| 23. | Order Line Text 1 | | C | an..70 | tdsls041.txta(1) | | tdpur400.txta(1) | |
| 24. | Order Line Text 2 | | C | an..70 | tdsls041.txta(2) | | tdpur400.txta(2) | |
| 25. | Order Line Text 2 | | C | an..70 | tdsls041.txta(3) | | tdpur400.txta(3) | |
| 26. | Data record end sign | | M | an7 | SA3_END | | SA3_END | |

Detailed description of Dispatch Advise, record type SA3 Dispatch Advise Lines

| | | | | | |
|------------|--------------------|--------------|--------------------|--------------|----------|
| Position | 1 | Field format | an3 | Field status | M |
| Field name | Record type | | (key field out/in) | | |

Description: This field identifies the record type in the message block.

It contains the fixed value 'SA3'.

Processing outgoing

EDI subsystem: None

BAAN: The position is filled with the fixed value 'SA3'.

Processing incoming

EDI subsystem: The position is filled with the fixed value 'SA3'.

BAAN: None

| | | | | | |
|------------|--------------------------|--------------|--------------------|--------------|----------|
| Position | 2 | Field format | an..14 | Field status | M |
| Field name | Message reference | | (key field out/in) | | |

Description: This field identifies all connected records of one dispatch advise. The message reference has to be clear by dispatch advise. The numbering helps to control the chronological order of the Dispatch Advises and the complete transfer. The field consists of a fix part with four characters, the current date in the format YYMMDD and a serial number with four characters.

The special format is defined in the network parameters in BAAN table tcedi020. When generating the message reference with the EDI subsystem, the created message reference needs to be specific, that means unique. While storing the message reference BAAN controls whether it is specific.

Processing outgoing

EDI subsystem:

BAAN: BAAN generates this number to identify a dispatch advise, stores it in the BAAN table field tcedi701.bano and writes it into all records of a Dispatch Advise.

Processing incoming

EDI subsystem: The EDI subsystem generates this number to identify a Dispatch Advise and writes it into all records of a Dispatch Advise.

BAAN: Mapping to BAAN field TFtcedi702.bano.

| | | | | | |
|------------|---|--------------|---------------|--------------|----------|
| Position | 3 | Field format | an..15 | Field status | M |
| Field name | Network address customer / supplier (key field out/in) | | | | |

Description: This field contains on the outgoing side the network address of the customer and on the incoming side the network address of the supplier.

Processing outgoing

EDI subsystem:

BAAN: The network address is stored in the BAAN table tcedi028 'Relations by network' under the corresponding business partner and the corresponding network in the BAAN field TFtcedi028.neta. The contents of this field is mapped to the position of the transfer file.

Processing incoming

EDI subsystem:

BAAN: The network address determines the corresponding business partner and the network in the BAAN table tcedi028 'Relations by network'. This identification is mapped in the BAAN field Tftdpur400.suno.

| | | | | | |
|------------|-------------------------------|--------------|---------------------------|--------------|----------|
| Position | 4 | Field format | out n..6 / in an10 | Field status | M |
| Field name | Dispatch Advise Number | | | | |

Description: The number of the dispatch advise on which the delivery is printed.

Processing outgoing

EDI subsystem: None

BAAN: Mapping of BAAN field TFtdsls045.dino to position.

Processing incoming

EDI subsystem: None

BAAN: Mapping of field value to BAAN field TFtdpur040.dino.

| | | | | |
|-------------------|---------------------------|-------------|--------------|----------|
| Position 5 | Field format | n..6 | Field status | C |
| Field name | Sales Order Number | | | |

Description: The order number by which the sales order is identified.

Processing outgoing

EDI subsystem: None

BAAN: Mapping of BAAN field TF tdsls045.orno to position.

Processing incoming

EDI subsystem: None

BAAN: None.

| | | | | |
|-------------------|------------------------------------|------------------|--------------|----------|
| Position 6 | Field format | out: n..4 | Field status | C |
| Field name | Sales Order Position Number | | | |

Description: The position number by which the order line is identified.

Processing outgoing

EDI subsystem: None

BAAN: Mapping of BAAN field TFtdsls045.pono to position.

Processing incoming

EDI subsystem: None

BAAN: None.

| | | | | | |
|------------|------------------------------|--------------|---------------------------|---------------------------|----------|
| Position | 7 | Field format | out an..30/in n..6 | Field status | C |
| Field name | Customer Order Number | | | (key field out/in) | |

Description: Customer Order Number of the purchase order.

Processing outgoing

EDI-subsystem: None

BAAN: Mapping of BAAN field TFtdsls040.eono to position.

Processing incoming

EDI subsystem: None

BAAN: Mapping of field value to BAAN field TFtdpur400.orno.

| | | | | | |
|------------|---------------------------------|--------------|------------------|--------------|----------|
| Position | 8 | Field format | n..9/n..4 | Field status | C |
| Field name | Customer Order Reference | | | | |

Description: .

Processing outgoing

EDI subsystem: None

BAAN: Mapping of BAAN table field TFtdsls041.epos to position.

Processing incoming

EDI subsystem: None

BAAN: Mapping of field value to BAAN field TFtdpur400.pono.

| | | | | | |
|------------|----------------------|--------------|-------------|--------------|----------|
| Position | 9 | Field format | n..8 | Field status | C |
| Field name | Delivery Date | | | | |

Description: The actual delivery date of a certain delivery.

Processing outgoing

EDI subsystem: None

BAAN: Mapping of BAAN field TFtdsls045.ddat to position.

Processing incoming

EDI subsystem: None

BAAN: Mapping of field value to BAAN field TFtdpur400.date.

| | | | | | |
|------------|-------------------------|--------------|--------------|--------------|----------|
| Position | 10 | Field format | n..15 | Field status | C |
| Field name | Ordered Quantity | | | | |

Description: The ordered quantity of the item, expressed in the sales unit.

Field Format: NNNNNNNNNN.NNNN

Processing outgoing

EDI subsystem: None

BAAN: Mapping of BAAN field TFtdsls045.oqua to position.

Processing incoming

EDI subsystem: None

BAAN: Mapping of field value to BAAN field TFtdpur400.oqua

| | | | | | |
|------------|----------------------------|--------------|--------------|--------------|----------|
| Position | 11 | Field format | n..15 | Field status | C |
| Field name | Back Order Quantity | | | | |

Description: The quantity to be delivered on back order, expressed in the sales unit.

Field Format: NNNNNNNNNN.NNNN

Processing outgoing

EDI subsystem: None

BAAN: Mapping of BAAN field TFtdsls045.bqua to position.

Processing incoming

EDI subsystem: None

BAAN: Mapping of field value to BAAN field TFtdpur400.bqua.

| | | | | | |
|------------|---------------------------|--------------|--------------|--------------|----------|
| Position | 12 | Field format | n..15 | Field status | C |
| Field name | Delivered Quantity | | | | |

Description: The delivered quantity of the item, expressed in the sales unit.

Processing outgoing

EDI subsystem: None

BAAN: Mapping of BAAN field TFtdsls045.dqua to position.

Processing incoming

EDI subsystem: None

BAAN: Mapping of field value to BAAN field TFtdpur400.diqu.

| | | | | | |
|------------|------------------------|--------------|------------|--------------|----------|
| Position | 13 | Field format | an3 | Field status | C |
| Field name | Sales Unit Code | | | | |

Description: The sales unit of items. The coding was carried out on the basis of ODETTE Standard ODDC 25:

Millimeter MMT

Centimeter CMT
 Meter MTR
 Kilometer KMT
 Square millimeter MMK
 Square centimeter CMK
 Square meter MTK
 Cubic millimeter MMQ
 Cubic centimeter CMQ
 Cubic meter MTQ
 Liter DMQ
 Gram GRM
 Kilogram KGM
 Metric ton TON
 Piece PCE

If you want to transfer additional units of measurement, you need to enter them in the session tcedi2130m000 'Maintain units' for the organisation **BEM**.

Processing outgoing

EDI subsystem: None

BAAN: Mapping of BAAN field TFtdsls041.cuqs to position.

Processing incoming

EDI subsystem: None

BAAN: Mapping of field value to BAAN field TFtdpur400.ciqp.

| | | | | | |
|------------|--------------------|--------------|--------------|--------------|----------|
| Position | 14 | Field format | n..15 | Field status | M |
| Field name | Sales Price | | | | |

Description: The unit price of the item.

Field Format: NNNNNNNNNN.NNNN

Processing outgoing

EDI subsystem: None

BAAN: Mapping of BAAN field TFtdsls041.pric to position.

Processing incoming

EDI subsystem: None

BAAN: None.

| | | | | | |
|------------|-------------------|--------------|-------------|--------------|----------|
| Position | 15 | Field format | n..8 | Field status | M |
| Field name | Order Date | | | | |

Description: The order date is the date on which the order has been created.

Processing outgoing

EDI-subsystem: None

BAAN: Mapping of BAAN field TFtdsls040.odat to position.

Processing incoming

EDI subsystem: None

BAAN: None

| | | | | | |
|------------|-----------------------------|--------------|-------------|--------------|----------|
| Position | 16 | Field format | n..8 | Field status | M |
| Field name | Planed Delivery Date | | | | |

Description: The planned delivery date of the goods on the sales order.

Processing outgoing

EDI-subsystem: None

BAAN: Mapping of BAAN field TFtdsls040.ddat to position.

Processing incoming

EDI subsystem: None

| | | | | | |
|------------|-----------------------------------|--------------|--------------|--------------|----------|
| Position | 17 | Field format | an..6 | Field status | C |
| Field name | Code of the actual Project | | | | |

Description: The project code for which the item is destined.

Processing outgoing

EDI-subsystem: None

BAAN: Mapping of BAAN field TFtdsls041.cprj to position.

Processing incoming

EDI subsystem: None

BAAN: None

| | | | | | |
|------------|-----------------------------|--------------|---------------|--------------|----------|
| Position | 18 | Field format | an..16 | Field status | C |
| Field name | Customer's Item Code | | | | |

Description: The code of the item that is being sold.

Processing outgoing

EDI-subsystem: None

BAAN: Mapping of BAAN field TFtdsls041.item to position.

Processing incoming

EDI subsystem: None

BAAN: None

| | | | | | |
|------------|-----------------------------|--------------|---------------|--------------|----------|
| Position | 19 | Field format | an..27 | Field status | C |
| Field name | Customer's Item Code | | | | |

Description: The item code used by the customer.

Processing outgoing

EDI-subsystem: None

BAAN: Mapping of BAAN field TFtdsls041.item to position and using the Code and Concersion Tabel Maintain Conversion of Item Codes by Relation (out) tcedi4144m000 or Maintain Conversion of Item Codes (out) tcedi4160m000.

Processing incoming

EDI subsystem: None

BAAN: None

| | | | | | |
|------------|--------------------------------|--------------|---------------|--------------|----------|
| Position | 20 | Field format | an..30 | Field status | C |
| Field name | Description of the Item | | | | |

Description: The description of the item used by the supplier.

Processing outgoing

EDI-subsystem: None

BAAN: Mapping of BAAN field TFtiitm001.dsca to position.

Processing incoming

EDI subsystem: None

BAAN: None

| | | | | | |
|------------|------------------------------|--------------|-------------|--------------|----------|
| Position | 21 | Field format | n..6 | Field status | C |
| Field name | Master Bill of Lading | | | | |

Description: The number identifying the bill of lading. This number is only shown when the procedure step "print bill of lading" has been carried out. Procedure steps are recorded under the order type.

Processing outgoing

EDI-subsystem: None

BAAN: Mapping of BAAN field TFtdsls045.fono to position.

Processing incoming

EDI subsystem: None

BAAN: None

| | | | | | |
|------------|---------------------------------------|--------------|------------|--------------|----------|
| Position | 22 | Field format | an2 | Field status | C |
| Field name | Qualifier for the Item Code Id | | | | |

Description: This field contains the qualifier item number which is used to determine the item number from the *Customer's item number*. This position must be filled with the constant value 'SA' ('SA' = supplier's item number) or any other defined qualifier.

Processing outgoing

EDI-subsystem: None

BAAN: This field will be filled with the constant value ‘SA’.

Processing incoming

EDI subsystem: This field will be filled with the constant value ‘SA’.

BAAN: None

| | | | | | |
|------------|--------------------------|--------------|---------------|--------------|----------|
| Position | 23 | Field format | an..70 | Field status | C |
| Field name | Order Line Text 1 | | | | |

Description: Order Line Text.

Processing outgoing

EDI-subsystem: None

BAAN: Mapping of BAAN field TFtdsls041.txta(1) to position.

Processing incoming

EDI subsystem: None

BAAN: Mapping of field value to BAAN field TFtdpur400.txta(1).

| | | | | | |
|------------|--------------------------|--------------|---------------|--------------|----------|
| Position | 24 | Field format | an..70 | Field status | C |
| Field name | Order Line Text 2 | | | | |

Description: Second line of Order Line Text.

Processing outgoing

EDI-subsystem: None

BAAN: Mapping of BAAN field TFtdsls041.txta(2) to position.

Processing incoming

EDI subsystem: None

BAAN: Mapping of field value to BAAN field TFtdpur400.txta(2).

| | | | | | |
|------------|--------------------------|--------------|---------------|--------------|----------|
| Position | 25 | Field format | an..70 | Field status | C |
| Field name | Order Line Text 3 | | | | |

Description: Third Line of Order Line Text.

Processing outgoing

EDI-subsystem: None

BAAN: Mapping of BAAN field TFtdsls041.txta(3) to position.

Processing incoming

EDI subsystem: None

BAAN: Mapping of field value to BAAN field TFtdpur400.txta(3).

| | | | | | |
|------------|---------------------------|--------------|------------|--------------|----------|
| Position | 26 | Field format | an7 | Field status | M |
| Field name | End of record sign | | | | |

Description: This field indicates the end of the record.

'SA3_END'

Processing outgoing

EDI subsystem: None

BAAN: The field is filled with the fixed value 'SA3_END'.

Processing incoming

EDI subsystem: The field is filled with the fixed value 'SA3_END'.

BAAN: None

SA4 Dispatch Advise Line Address

Status: Mandatory

Frequency: Once by dispatch advise line.

Description: This record type supports the transfer of position-specific dispatch advise address data. It is directly connected to the previous record type SA3.

| DISPATCH ADVISE INHOUSE FORMAT | | | | | Mapping from Application Table Fields (out) | | Mapping to Application Fields (in) | |
|--------------------------------|--|-----|----|--------|---|---------------------------|------------------------------------|--------|
| Pos | FIELD DESCRIPTION | Key | ST | FM | Table Field | Action | Table Field | Action |
| 1. | Record type | O/I | M | an3 | SA4 | | SA4 | |
| 2. | Message reference | O/I | M | an..14 | tcedi701.bano | Generation (see below) | | |
| 3. | Customer number | O/I | M | an..15 | tcedi028.neta | | | |
| 4. | Dispatch Advise Number | O/I | M | n..6 | tdsls045.dino | | | |
| 5. | Sales Order Number | O/I | M | n..6 | tdsls045.orno | Code and Conversion | | |
| 6. | Sales Order Position Number | | M | n..4 | tdsls045.pono | | | |
| 7. | Address Qualifier Delivery Address | | M | an1 | tcedi224.code | here: "0"Delivery Address | | |
| 8. | Delivery Address Country | | C | an..6 | tdsls042.ctty | DA3 Code and Conversion | | |
| 9. | Delivery Address first part of the name | | C | an..35 | tdsls042.nama | DA3 | | |
| 10. | Delivery Address second part of the name | | C | an..30 | tdsls040.namb | DA3 | | |
| 11. | Delivery Address Part 1 | | C | an..30 | tdsls042.namc | DA3 | | |
| 12. | Delivery Address 2 | | C | an..30 | tdsls042.namd | DA3 | | |
| 13. | Delivery Address City | | C | an..30 | tdsls042.name | DA3 | | |

| DISPATCH ADVISE INHOUSE FORMAT | | | | | Mapping from Application Table Fields (out) | | Mapping to Application Fields (in) | |
|--------------------------------|--|-----|----|--------|---|--------------------|------------------------------------|--------|
| Pos | FIELD DESCRIPTION | Key | ST | FM | Table Field | Action | Table Field | Action |
| 14. | Delivery Address. further information for city e.g. province/country | | C | an..30 | tdsls042.namf | DA3 | | |
| 15. | Delivery Address Zip Code | | C | an..10 | tdsls042.pstc | DA3 | | |
| 16. | TAX Number | | C | an..20 | tdsls042.fovn | DA3 | | |
| 17. | End of record sign Constant 'SA4_END' | | M | an7 | | Constant 'SA4_END' | | |

Detailed description of Dispatch Advise, record type SA4 Dispatch Advise Line Address

| | | | | | |
|------------|--------------------|--------------|--------------------|--------------|----------|
| Position | 1 | Field format | an3 | Field status | M |
| Field name | Record type | | (key field out/in) | | |

Description: This field identifies the record type in the message block.

It contains the fixed value 'SA4'.

Processing outgoing

EDI subsystem: None

BAAN: The position is filled with the fixed value 'SA4'.

Processing incoming

EDI subsystem: The position is filled with the fixed value 'SA4'.

BAAN None

| | | | | | |
|------------|--------------------------|--------------|--------------------|--------------|----------|
| Position | 2 | Field format | an..14 | Field status | M |
| Field name | Message reference | | (key field out/in) | | |

Description: This field identifies all connected records of one dispatch advise. The message reference has to be clear by dispatch advise. The numbering helps to control the chronological order of the Dispatch Advises and the complete transfer. The field consists of a fix part with four characters, the current date in the format YYMMDD and a serial number with four characters.

The special format is defined in the network parameters in BAAN table tcedi020. When generating the message reference with the EDI subsystem, the created message reference needs to be specific, that means unique. While storing the message reference BAAN controls whether it is specific.

Processing outgoing

EDI subsystem:

BAAN: Refer to SA3.

Processing incoming

EDI subsystem: Refer to SA3

BAAN: Mapping to BAAN field TFtcedi702.bano

| | | | | | |
|------------|---|--------------|--------------------|--------------|----------|
| Position | 3 | Field format | an..15 | Field status | M |
| Field name | Network adress customer / supplier | | (key field out/in) | | |

Description: This field contains on the outgoing side the network address of the customer and on the incoming side the network address of the supplier.

Processing outgoing

EDI subsystem:

BAAN: Refer to SA3.

Processing incoming

EDI subsystem:

BAAN: Refer to SA3.

| | | | | | |
|------------|-------------------------------|--------------|---------------------------|--------------|----------|
| Position | 4 | Field format | out n..6 / in an10 | Field status | M |
| Field name | Dispatch Advise Number | | | | |

Description: The number of the dispatch advise on which the delivery is printed.

Processing outgoing

EDI subsystem: None

BAAN: Mapping of BAAN field TFtdsls045.dino to position.

Processing incoming

EDI subsystem: None

BAAN: None

| | | | | | |
|------------|---------------------------|--------------|-------------|--------------|----------|
| Position | 5 | Field format | n..6 | Field status | C |
| Field name | Sales Order Number | | | | |

Description: The order number by which the sales order is identified.

Processing outgoing

EDI subsystem: None

BAAN: Mapping of BAAN field TF tds045.orno to position.

Processing incoming

EDI subsystem: None

BAAN: None.

| | | | | |
|-------------------|------------------------------------|------------------|--------------|----------|
| Position 6 | Field format | out: n..4 | Field status | C |
| Field name | Sales Order Position Number | | | |

Description: The position number by which the order line is identified.

Processing outgoing

EDI subsystem: None

BAAN: Mapping of BAAN field TFtdsls045.pono to position.

Processing incoming

EDI subsystem: None

BAAN: None

| | | | | |
|-------------------|---|------------|--------------|----------|
| Position 7 | Field format | an1 | Field status | M |
| Field name | Address Qualifier Delivery Address | | | |

Description: This field contains the qualifier address type which is used to determine the delivery address from the value in position 7. This position must be filled with the fixed value '0'.

Processing outgoing

EDI-subsystem: None

BAAN: This field is filled with the fixed value '0'.

Processing incoming

EDI subsystem: This field is filled with the fixed value '0'.

BAAN: None

| | | | | |
|-------------------|---------------------------------|--------------|--------------|----------|
| Position 8 | Field format | an..6 | Field status | C |
| Field name | Delivery Address Country | | | |

Description: The country where the customer's goods must be delivered according to ODDC 6.

AT: Austria

BE: Belgium

CH: Switzerland

DE: Federal Republik of Germany

DK: Denmark

ES: Spain
 FI: Finland
 FR: France
 GB: United Kingdom
 GR: Greece
 IE: Ireland
 IT: Italy
 LU: Luxembourg
 NL: Netherlands
 NO: Norway
 PT: Portugal
 SE: Sweden
 TR: Turkey
 YU: Yugoslavia

Processing outgoing

EDI-subsystem: None

BAAN: Mapping of BAAN field TFtdsls042.ctty to position.

Processing incoming

EDI subsystem: None.

BAAN: None.

| | | | | | |
|------------|--|--------------|---------------|--------------|----------|
| Position | 9 | Field format | an..35 | Field status | C |
| Field name | Delivery Address first part of the name | | | | |

Description: The first part of the name of the Delivery Address.

Processing outgoing

EDI-subsystem: None

BAAN: Mapping of BAAN field TFtdsls042.nama to position.

Processing incoming

EDI subsystem: None

BAAN: None

| | | | | | |
|------------|---|--------------|---------------|--------------|----------|
| Position | 10 | Field format | an..30 | Field status | C |
| Field name | Delivery Address second part of the name | | | | |

Description: The second part of the name of the Delivery Address.

Processing outgoing

EDI subsystem: None

BAAN: Mapping of BAAN field TFtdsls042.namb to position.

Processing incoming

EDI subsystem: None

BAAN: None

| | | | | | |
|------------|--------------------------------|--------------|---------------|--------------|----------|
| Position | 11 | Field format | an..30 | Field status | C |
| Field name | Delivery Address Part 1 | | | | |

Description: The first part of the Delivery Address.

Processing outgoing

EDI subsystem: None

BAAN: Mapping of BAAN field TFtdsls042.namc to position.

Processing incoming

EDI subsystem: None

BAAN: None

| | | | | | |
|------------|--------------------------------|--------------|---------------|--------------|----------|
| Position | 12 | Field format | an..30 | Field status | C |
| Field name | Delivery Address Part 2 | | | | |

Description: The second part of the Delivery Address.

Processing outgoing

EDI subsystem: None

BAAN: Mapping of BAAN field TFtdsls042.namd to position.

Processing incoming

EDI subsystem: None

BAAN: None

| | | | | | |
|------------|------------------------------|--------------|---------------|--------------|----------|
| Position | 13 | Field format | an..30 | Field status | C |
| Field name | Delivery Address City | | | | |

Description: The name of the City of the Delivery Address.

Processing outgoing

EDI subsystem: None

BAAN: Mapping of BAAN field TFtdsls042.name to position.

Processing incoming

EDI subsystem: None

BAAN: None

| | | | | | |
|------------|---|--------------|---------------|--------------|----------|
| Position | 14 | Field format | an..30 | Field status | C |
| Field name | Delivery Address für further information | | | | |

Description: This position can be used for further information concerning the delivery address, e.g. province or country information.

Processing outgoing

EDI subsystem: None

BAAN: Mapping of BAAN field TFtdsls042.name to position.

Processing incoming

EDI subsystem: None

BAAN: None

| | | | | | |
|------------|----------------------------------|--------------|---------------|--------------|----------|
| Position | 15 | Field format | an..10 | Field status | C |
| Field name | Delivery Address Zip Code | | | | |

Description: The ZIP code of the specific delivery address.

Processing outgoing

EDI subsystem: None

BAAN: Mapping of BAAN field TFtdsls042.pstc to position.

Processing incoming

EDI subsystem: None

BAAN: None

| | | | | | |
|------------|-------------------|--------------|---------------|--------------|----------|
| Position | 16 | Field format | an..20 | Field status | C |
| Field name | TAX Number | | | | |

Description: As from 1993, companies trading within the EU are legally required to report their import/export activities. Reporting is based on the tax number. Not filling in the tax number will cause the system to produce a message.

Processing outgoing

EDI subsystem: None

BAAN: Mapping of BAAN field Tfdsls042. fovn to position.

Processing incoming

EDI subsystem: None

BAAN: None

| | | | | | |
|------------|---------------------------|--------------|------------|--------------|----------|
| Position | 17 | Field format | an7 | Field status | M |
| Field name | End of record sign | | | | |

Description: This field identifies the end of the record.

Contents: 'SA4_END'

Processing outgoing

EDI-subsystem: None

BAAN: The position is filled with the fixed value 'SA4_END'.

Processing incoming

EDI subsystem: The position is filled with the fixed value 'SA4_END'.

BAAN: None

Definition of BEMIS 1.0.a Import and Export File for the Message Trading Dispatch Advise
2-48

3 Sample file incoming/outgoing message

"SA1";"2409905110007";"ILN240";"ILN240";"DADVIS";"BEMIS";"";"";19990511;1545;"";"SA1_END"

"SA2";"2409905110007";"ILN240";14;"0";"DE";"Kunde222222";"";"Musterweg";"";"222222Lübeck";"";"222222";"UIDKUNDE";"";"DP";"ZZ";"";"";"";"";"SA2_END"

"SA3";"2409905110007";"ILN240";14;70003;10;"200007";"10";19990511;100;0;100;"PCE";109;19990511;19990511;;;;;;;"G100";"G100";"Testartikel EDI";0;"SA";"Item Description : Testartikel EDI";;"SA3_END"

"SA4";"240-9905110007";"ILN240";14;70003;10;"0";"DE";"Lager für Verpackungen";"";"Baan Motors GmbH";"Karl-Wiechert-Allee 66";"30625 Hannover";"";"30625";"";"SA4_END"

Definition of BEMIS 1.0.a Import and Export File for the Message Trading Dispatch Advise
3-2

4 Glossary of terms and abbreviations

| | |
|-----------------------|--|
| ABRUF | Schedule |
| Appl | Application |
| ANSI | American National Standards Organization |
| BEM | Baan Electronic Message - abbreviated form of BEMIS used with the definition of the EDI organization |
| BEMIS | Baan Electronic Message Interchange System |
| Business partner (BP) | Customer or supplier |
| C | Conditional, that is, optional message |
| defaults.edi | Export file detailing master EDI data |
| DELINS | Odette Delivery Instruction (Schedule) |
| Directory | Folder |
| EDI | Electronic Data Interchange; electronic exchange of documents in standard formats |
| EDIFACT | Electronic Data Exchange For Administration, Commerce and Transport. An ISO standard. |
| ELP | External Logistic partner |
| evaluation expression | If statement in the conversion setup for outgoing messages |
| ISO | International Standards Organization |
| ISO 4217 | Code table |
| M | Mandatory (compulsory) message |
| MAIS | General Motor's interpretation of the subset of EDIFACT DELJIT Message |
| Messg | Message |
| network address | Folder (directory) path on network |
| ODDC | Odette Code Table |
| ODDC25 | Odette Code Table 25 |
| ODETTE | European standard for electronic data exchange |
| Org | Organization, that is, system |
| SCH | Supply Chain |
| Semaphore | Method to show a status using files with zero length |

| | |
|-------------|---|
| Translation | Conversion of one data format to another, for example Baan in-house data format to ODETTE |
| VAT | Value Added Tax (tax on turnover; sales tax) |
| VDA | Standard used for electronic data exchange in Germany |
| X12 | Standard used for electronic data exchange in the United States |
